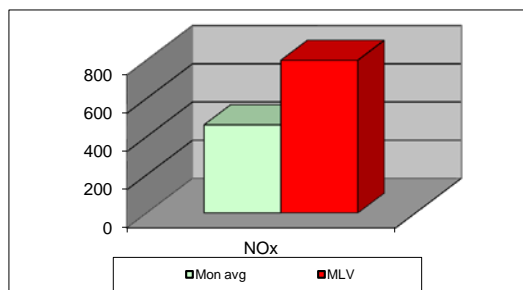
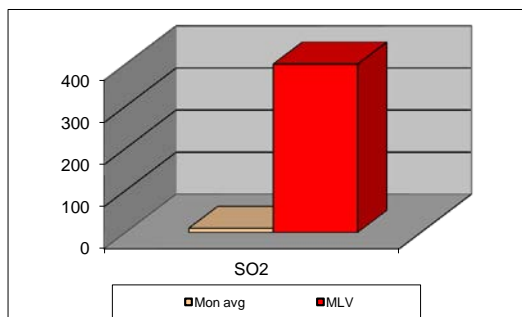
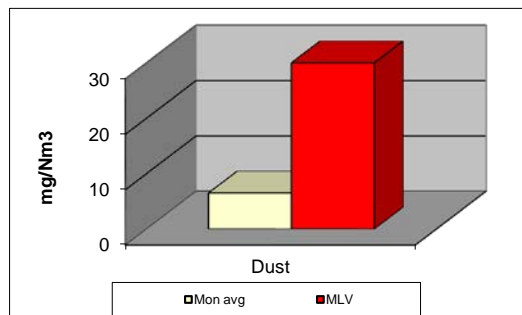


MONTHLY REPORT FROM EMISSION MONITORING IN TITAN CEMENTARNICA USJE - KILN No.3



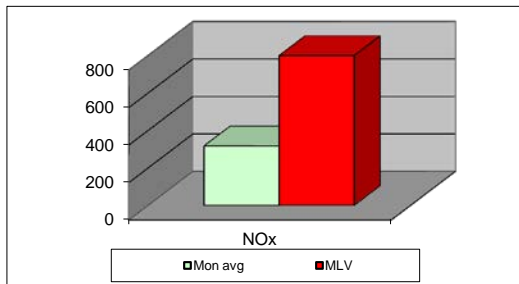
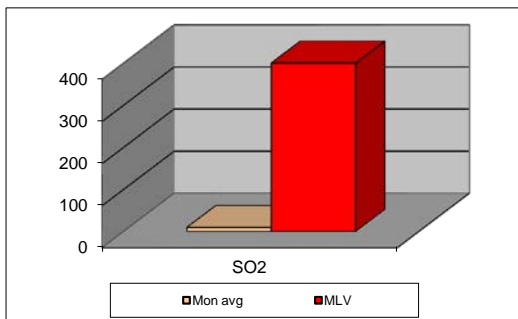
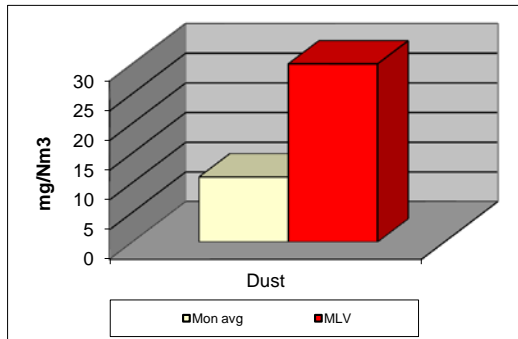
November 2017	Dust (mg/Nm ³) МДК 30mg/m ³	МДК 30mg/m ³	SO ₂ (mg/Nm ³) МДК 400mg/m ³	МДК 400mg/m ³	NOx (mg/Nm ³) МДК 800mg/m ³	МДК 800mg/m ³	Comments
01.11.2017	3,21	30	11,97	400	451,72	800	
02.11.2017	4,93	30	8,33	400	441,1	800	
03.11.2017	4,18	30	4,77	400	533,75	800	
04.11.2017	3,86	30	5,74	400	585,2	800	
05.11.2017	4,39	30	5,22	400	498,29	800	
06.11.2017	8,5	30	5,46	400	502,91	800	
07.11.2017	6,51	30	5,33	400	449	800	
08.11.2017	6,17	30	5,88	400	499,39	800	
09.11.2017	6,67	30	5,43	400	561,74	800	
10.11.2017	6,23	30	9,76	400	461,12	800	
11.11.2017	7,07	30	4,87	400	451,74	800	
12.11.2017	6,59	30	4,07	400	417,75	800	
13.11.2017	6,62	30	8,33	400	653,8	800	
14.11.2017	6,43	30	6,87	400	541,61	800	
15.11.2017	6,34	30	6,81	400	465,3	800	
16.11.2017	6,36	30	6,95	400	499,09	800	
17.11.2017	7,2	30	6,05	400	593,99	800	
18.11.2017	6,64	30	7,17	400	547,21	800	
19.11.2017	6,83	30	10,67	400	402,66	800	
20.11.2017	6,53	30	7,66	400	403,83	800	
21.11.2017	7,23	30	11,81	400	539,41	800	
22.11.2017	7,33	30	9,8	400	413,31	800	
23.11.2017	7,45	30	8,16	400	381,86	800	
24.11.2017	7,27	30	11,69	400	395,32	800	
25.11.2017	7,47	30	18,35	400	497,66	800	
26.11.2017	7,6	30	21,33	400	377,69	800	
27.11.2017	8,18	30	22,8	400	282,21	800	
28.11.2017	7,63	30	29,95	400	268,84	800	
29.11.2017	6,73	30	84,82	400	439,72	800	
30.11.2017	7,11	30	12,35	400	462,7	800	
Average	6,5	30	9,8	400	461,7	800	

MLV: Maximum Limit Value

Explanations: The monthly average values are calculated on the half hour emissin values. Measured values of the concentrations are calculated at 10 vol. of O2
Results of the measurmets are represented in Nm3 (Nm3 - T=273K, P=101,3kP, dry gas)c

Note:

MONTHLY REPORT FROM EMISSION MONITORING IN TITAN CEMENTARNICA USJE - KILN No.4



November 2017	Dust (mg/Nm ³)	МДК 30mg/m ³	SO ₂ (mg/Nm ³)	МДК 400mg/m ³	NOx (mg/Nm ³)	МДК 800mg/m ³	Comments
	МДК 30mg/m ³		МДК 400mg/m ³		МДК 800mg/m ³		
01.11.2017	6,45	30	1,32	400	380,56	800	
02.11.2017	6,33	30	3,8	400	402,16	800	
03.11.2017	6,28	30	10,25	400	383,35	800	
04.11.2017	7,98	30	9,31	400	287	800	
05.11.2017	6,34	30	4,91	400	229,35	800	
06.11.2017	11,02	30	3,39	400	459,36	800	
07.11.2017	14,27	30	12,12	400	367,1	800	
08.11.2017	10,02	30	9,62	400	334,93	800	
09.11.2017	13,09	30	2,05	400	400,62	800	
10.11.2017	13,92	30	5,78	400	291,81	800	
11.11.2017	14,45	30	7,49	400	221,99	800	
12.11.2017	11,43	30	8,54	400	232,54	800	
13.11.2017		30		400		800	
14.11.2017		30		400		800	
15.11.2017		30		400		800	
16.11.2017		30		400		800	
17.11.2017		30		400		800	
18.11.2017		30		400		800	
19.11.2017		30		400		800	
20.11.2017	9,65	30	8,71	400	375,41	800	
21.11.2017	11,54	30	10,55	400	327,75	800	
22.11.2017	13,5	30	10,38	400	366,49	800	
23.11.2017	14,55	30	12,88	400	277,6	800	
24.11.2017	13,42	30	8,59	400	271,53	800	
25.11.2017	13,22	30	9,05	400	277,67	800	
26.11.2017	13,15	30	24,97	400	298,65	800	
27.11.2017	8,22	30	20,57	400	231,3	800	
28.11.2017	9,14	30	12,94	400	227,06	800	
29.11.2017	12,06	30	5,03	400	381,7	800	
30.11.2017	12,16	30	12,25	400	287,92	800	
Average	11,0	30	9,3	400	318,0	800	

MLV: Maximum Limit Value

Explanations: The monthly average values are calculated on the half hour emission values. Measured values of the concentrations are calculated at 10 vol. of O₂. Results of the measurements are represented in Nm³ (Nm³ - T=273K, P=101,3kP, dry gas)

Note: Due to technical problems, Kiln 4 for clinker production was out of operation from 12.11.2017 until 20.11.2017.