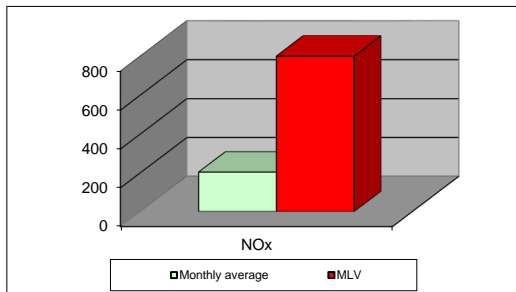
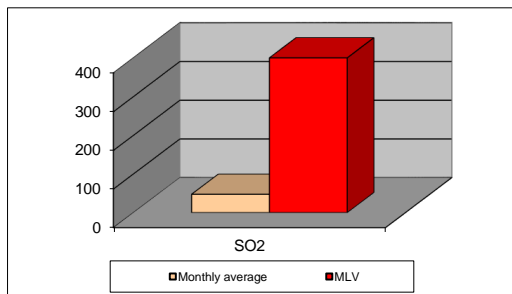
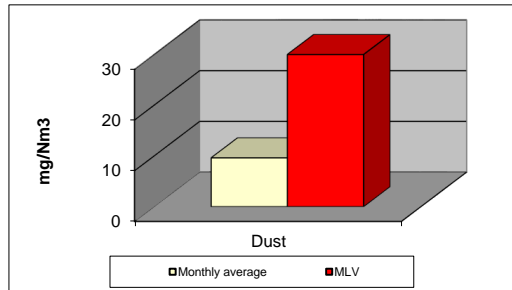


### MONTHLY REPORT FROM EMISSION MONITORING IN TITAN CEMENTARNICA USJE - KILN No.3



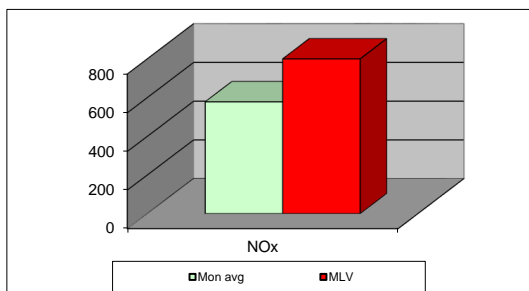
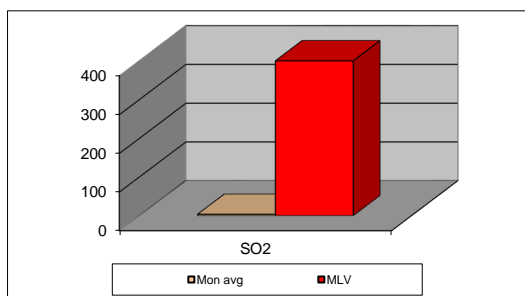
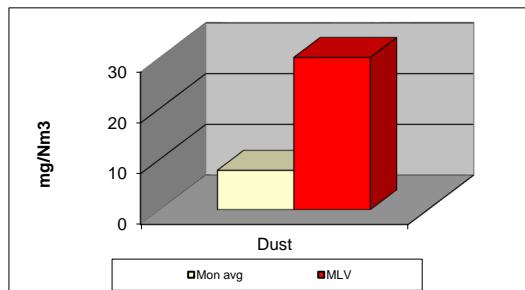
jan.21	Dust (mg/Nm <sup>3</sup> ) МДК 30mg/m <sup>3</sup>	МДК 30mg/m <sup>3</sup>	SO <sub>2</sub> (mg/Nm <sup>3</sup> ) МДК 400mg/m <sup>3</sup>	МДК 400mg/m <sup>3</sup>	NOx (mg/Nm <sup>3</sup> ) МДК 800mg/m <sup>3</sup>	МДК 800mg/m <sup>3</sup>	Comments
01.01.2021	7,16	30	22,86	400	371,23	800	
02.01.2021	7,85	30	12,13	400	199,81	800	
03.01.2021	6,77	30	10,05	400	214,16	800	
04.01.2021	6,91	30	2,44	400	184,91	800	
05.01.2021	7,87	30	23,18	400	204,94	800	
06.01.2021	8,33	30	28,17	400	135,39	800	
07.01.2021	8,09	30	21,95	400	105,65	800	
08.01.2021	8,99	30	32,56	400	118,5	800	
09.01.2021	10,34	30	149,32	400	404,04	800	
10.01.2021	10,76	30	126,98	400	525,28	800	
11.01.2021	10,06	30	22,61	400	344,24	800	
12.01.2021	11,38	30	19,48	400	464,63	800	
13.01.2021	10,45	30	19,78	400	288,58	800	
14.01.2021	11,41	30	13,25	400	244,85	800	
15.01.2021	10,61	30	6,43	400	213,66	800	
16.01.2021	12,46	30	9,63	400	312,34	800	
17.01.2021	12,19	30	19,99	400	169,88	800	
18.01.2021	12,07	30	16,27	400	256,19	800	
19.01.2021	13,72	30	57,89	400	284,05	800	
20.01.2021	13	30	32,47	400	142,55	800	
21.01.2021	12,45	30	40,46	400	235,73	800	
22.01.2021	10,31	30	86,46	400	236,54	800	
23.01.2021	8,24	30	96,94	400	123,76	800	
24.01.2021	8,28	30	186,1	400	148,37	800	
25.01.2021	7,63	30	121,99	400	112,62	800	
26.01.2021	8,32	30	92,75	400	108,42	800	
27.01.2021	8,71	30	76,64	400	82,9	800	
28.01.2021	9,14	30	59,88	400	59,58	800	
29.01.2021	9,65	30	53,81	400	57,62	800	
30.01.2021	8,36	30	41,09	400	53,88	800	
31.01.2021	8,58	30	23,14	400	47,39	800	
<b>Average</b>	<b>9,6</b>	<b>30</b>	<b>47,4</b>	<b>400</b>	<b>203,33</b>	<b>800</b>	

**MLV: Maximum Limit Value**

Explanations: The monthly average values are calculated on the half hour emissin values. Measured values of the concentrations are calculated at 10 vol. of O<sub>2</sub>  
Results of the measurments are represented in Nm3 (Nm3 - T=273K, P=101,3kP, dry gas)

**Note:**

## MONTHLY REPORT FROM EMISSION MONITORING IN TITAN CEMENTARNICA USJE - KILN No.4



jan.21	Dust (mg/Nm <sup>3</sup> ) МДК 30mg/m <sup>3</sup>	МДК 30mg/m <sup>3</sup>	SO <sub>2</sub> (mg/Nm <sup>3</sup> ) МДК 400mg/m <sup>3</sup>	МДК 400mg/m <sup>3</sup>	NOx (mg/Nm <sup>3</sup> ) МДК 800mg/m <sup>3</sup>	МДК 800mg/m <sup>3</sup>	Comments
01.01.2021	8,53	30	4,13	400	632,78	800	
02.01.2021	9,57	30	1,81	400	647,77	800	
03.01.2021	10,23	30	5,39	400	592,4	800	
04.01.2021	7,37	30	2,7	400	531,75	800	
05.01.2021	10	30	10,03	400	554,55	800	
06.01.2021	8,11	30	0,67	400	635,66	800	
07.01.2021	5,99	30	0,77	400	617,06	800	
08.01.2021	6,77	30	1,95	400	479,95	800	
09.01.2021	4,72	30	5,77	400	561,18	800	
10.01.2021	5,39	30	6,3	400	475,42	800	
11.01.2021		30		400		800	
12.01.2021		30		400		800	
13.01.2021		30		400		800	
14.01.2021		30		400		800	
15.01.2021		30		400		800	
16.01.2021		30		400		800	
17.01.2021		30		400		800	
18.01.2021		30		400		800	
19.01.2021		30		400		800	
20.01.2021		30		400		800	
21.01.2021		30		400		800	
22.01.2021		30		400		800	
23.01.2021		30		400		800	
24.01.2021		30		400		800	
25.01.2021		30		400		800	
26.01.2021		30		400		800	
27.01.2021		30		400		800	
28.01.2021		30		400		800	
29.01.2021		30		400		800	
30.01.2021		30		400		800	
31.01.2021		30		400		800	
<b>Average</b>	<b>7,76</b>	<b>30</b>	<b>3,54</b>	<b>400</b>	<b>578,75</b>	<b>800</b>	

**MLV: Maximum Limit Value**

Explanations: The monthly average values are calculated on the half hour emissin values. Measured values of the concentrations are calculated at 10 vol. of O2  
Results of the measurments are represented in Nm3 (Nm3 - T=273K, P=101,3kP, dry gas)

**Note: Due to annual maintenance, Kiln 4 is not in operation from 11.01.2021**