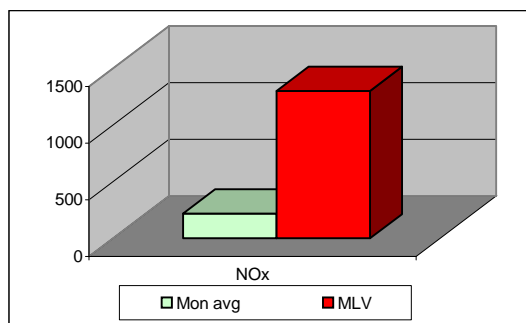
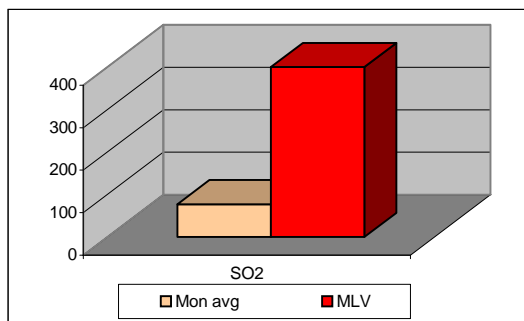
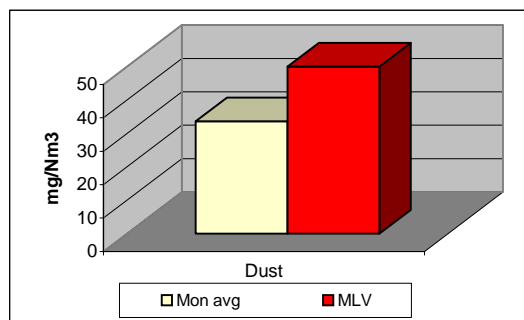


MONTHLY REPORT FROM EMISSION MONITORING IN TITAN CEMENTARNICA USJE- Pecka 3

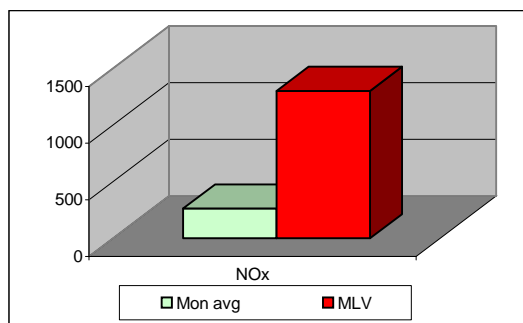
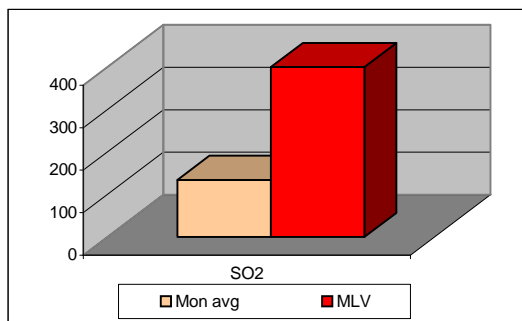
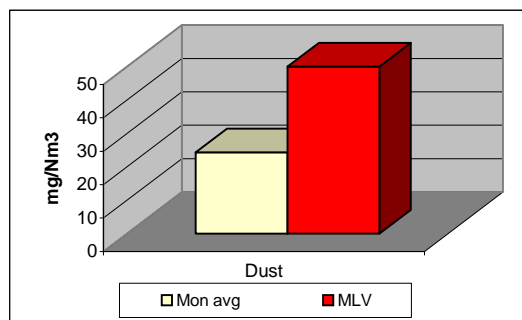


January 2008 Pecka 3	Dust (mg/Nm ³) МДК 50mg/m ³	МДК 50mg/m ³	SO ₂ (mg/Nm ³) МДК 400mg/m ³	МДК 400mg/m ³	NOx (mg/Nm ³) МДК 1300mg/m ³	МДК 1300mg/m ³	Comments
1	34	50	40	400	351	1300	
2	40	50	45	400	328	1300	
3	44	50	43	400	194	1300	
4	48	50	71	400	239	1300	
5	47	50	130	400	124	1300	
6	44	50	124	400	42	1300	
7	50	50	97	400	42	1300	
8	51	50	83	400	39	1300	
9	43	50	39	400	280	1300	
10	45	50	34	400	267	1300	
11	46	50	70	400	280	1300	
12	46	50	76	400	105	1300	
13	45	50	70	400	71	1300	
14	46	50	77	400	21	1300	
15	45	50	81	400	162	1300	
16	51	50	65	400	182	1300	
17	54	50	63	400	167	1300	
18	59	50	62	400	105	1300	
19	17	50	40	400	351	1300	
20	16	50	55	400	226	1300	
21	18	50	76	400	309	1300	
22	19	50	100	400	251	1300	
23	19	50	104	400	247	1300	
24	19	50	110	400	189	1300	
25	18	50	89	400	147	1300	
26	16	50	60	400	204	1300	
27	20	50	57	400	294	1300	
28	12	50	53	400	346	1300	
29	8	50	109	400	401	1300	
30	9	50	146	400	426	1300	
31	12	50	146	400	405	1300	
Average	34	50	77	400	219	1300	

Maximum Limit Value

Explanations: The monthly average values are calculated on the half hour emission values. Measured values of the concentrations are calculated at 10 vol. of O₂. Results of the measurements are represented in Nm³ (Nm³ - T=273K, P=101,3kP, dry gas)

MONTHLY REPORT FROM EMISSION MONITORING IN TITAN CEMENTARNICA USJE- Pecka 4



January 2008 Pecka 4	Dust (mg/Nm ³) МДК 50mg/m ³	SO ₂ (mg/Nm ³) МДК 400mg/m ³	NOx (mg/Nm ³) МДК 1300mg/m ³	Comments
1	21	29	340	
2	22	43	239	
3	21	50	198	
4	26	142	204	
5	29	201	195	
6	27	240	172	
7	22	188	175	
8	22	121	304	
9	23	106	345	
10	25	72	392	
11	26	66	664	
12	27	70	220	
13	29	65	401	
14		61	300	
15	22	66	214	
16	22	78	245	
17	22	86	429	
18	21	213	118	
19	20	136	125	
20	21	158	253	
21	22	168	209	
22	23	207	232	
23	23	165	256	
24	23	200	353	
25	27	206	145	
26	30	167	239	
27	32	151	231	
28	34	118	461	
29	33	145	243	
30	35	241	162	
31	32	201	294	
Average	24	135	263	

Maximum Limit Value

Explanations: The monthly average values are calculated on the half hour emission values. Measured values of the concentrations are calculated at 10 vol. of O₂. Results of the measurements are represented in Nm³ (Nm³ - T=273K, P=101,3kP, dry gas)