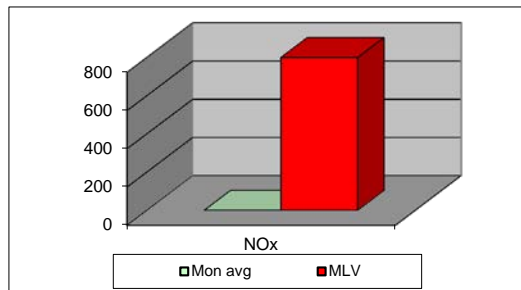
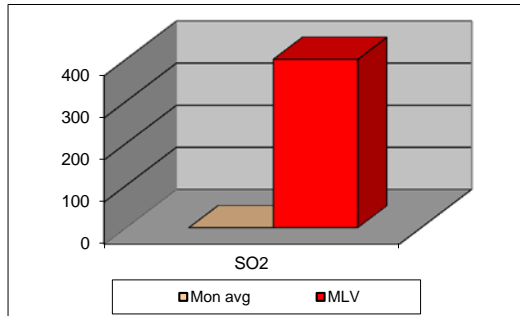
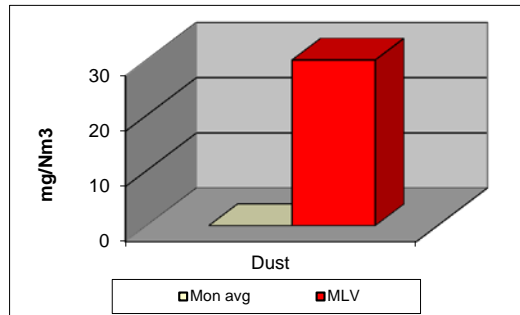


MONTHLY REPORT FROM EMISSION MONITORING IN TITAN CEMENTARNICA USJE - KILN No.3

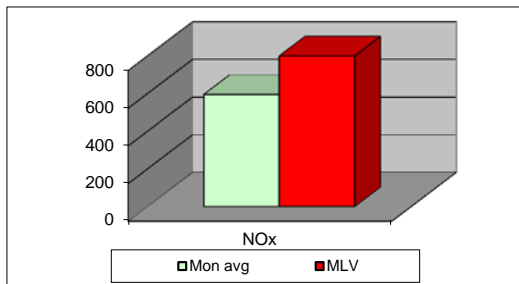
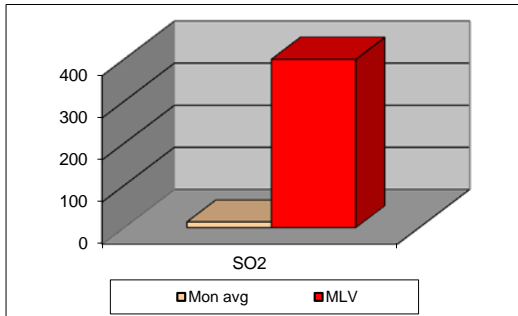
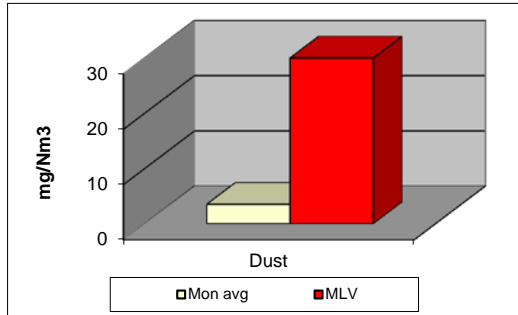


September 2014	Dust (mg/Nm ³) МДК 30mg/m ³	МДК 30mg/m ³	SO ₂ (mg/Nm ³) МДК 400mg/m ³	МДК 400mg/m ³	NO _x (mg/Nm ³) МДК 800mg/m ³	МДК 800mg/m ³	Comments
		30		400		800	
		30		400		800	
		30		400		800	
		30		400		800	
		30		400		800	
		30		400		800	
		30		400		800	
		30		400		800	
		30		400		800	
		30		400		800	
		30		400		800	
		30		400		800	
		30		400		800	
		30		400		800	
		30		400		800	
		30		400		800	
		30		400		800	
		30		400		800	
		30		400		800	
		30		400		800	
		30		400		800	
		30		400		800	
		30		400		800	
		30		400		800	
		30		400		800	
		30		400		800	
		30		400		800	
		30		400		800	
		30		400		800	
		30		400		800	
		30		400		800	
		30		400		800	
		30		400		800	
Average		30		400		800	

MLV: Maximum Limit Value

Eplanations: The monthly average values are calculated on the half hour emissin values. Measured values of the concentrations are calculated at 10 vol. of O₂
Results of the measurmets are represented in Nm3 (Nm3 - T=273K, P=101,3kP, dry gas)c

MONTHLY REPORT FROM EMISSION MONITORING IN TITAN CEMENTARNICA USJE - KILN No.4



September 2014	Dust	МДК	SO ₂	МДК	NO _x	МДК	Comments
	(mg/Nm ³) МДК 30mg/m ³	30mg/m ³	(mg/Nm ³) МДК 400mg/m ³	400mg/m ³	(mg/Nm ³) МДК 800mg/m ³	800mg/m ³	
	6,05	30	17,57	400	640,72	800	
	5,49	30	12,66	400	693,21	800	
	5,19	30	14,32	400	691,68	800	
	4,18	30	14,48	400	633,68	800	
	3,32	30	17,02	400	498,51	800	
	3,35	30	81,74	400	682,07	800	
	3,22	30	15,87	400	569,17	800	
	3,23	30	20,71	400	519,83	800	
	3,35	30	20,61	400	565,33	800	
	3,27	30	15,46	400	684,09	800	
	3,41	30	14,61	400	659,33	800	
	3,23	30	18,07	400	616,57	800	
	3,04	30	14,42	400	598,04	800	
	2,66	30	1,8	400	7,45	800	
	3	30	4,18	400	152,81	800	
	3,1	30	6,3	400	532,9	800	
	3,43	30	9,21	400	471,56	800	
	3,6	30	4,97	400	665,73	800	
	3,5	30	10,21	400	703,58	800	
	3,5	30	10,25	400	725,64	800	
	3,17	30	8,36	400	683,29	800	
	3,29	30	6,84	400	693,44	800	
	3,08	30	5,9	400	745,99	800	
	3,37	30	7,61	400	734,18	800	
	3,6	30	10,51	400	710,19	800	
	3,26	30	9,43	400	655,87	800	
	2,84	30	8,28	400	552,63	800	
	3,07	30	12,09	400	608,48	800	
	3,64	30	8,88	400	637,54	800	
	3,53	30	9	400	543,11	800	
Average	3,5	30	13,7	400	595,9	800	

MLV: Maximum Limit Value

Eplanations: The monthly average values are calculated on the half hour emissin values. Measured values of the concentrations are calculated at 10 vol. of O₂
 Results of the measurments are represented in Nm3 (Nm3 - T=273K, P=101,3kP, dry gas)c