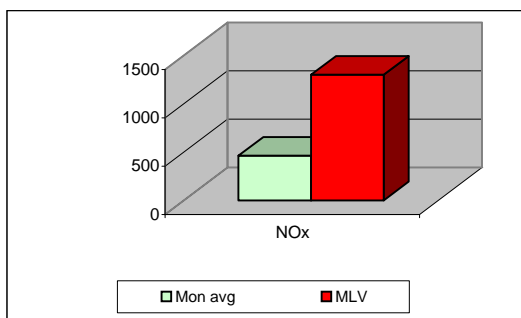
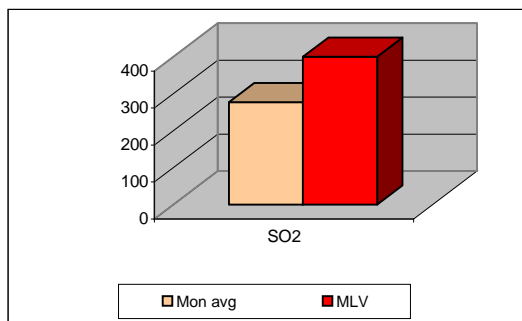
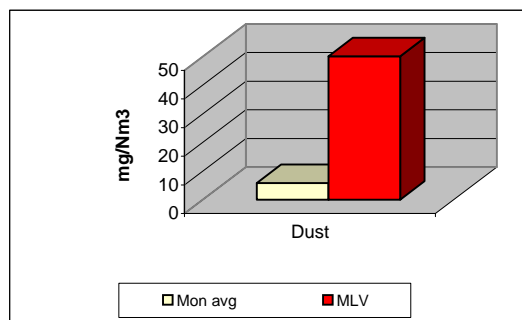


MONTHLY REPORT FROM EMISSION MONITORING IN TITAN CEMENTARNICA USJE - KILN No.4



January 2010	Dust (mg/Nm ³) МДК 50mg/m ³	МДК 50mg/m ³	SO ₂ (mg/Nm ³) МДК 400mg/m ³	МДК 400mg/m ³	NOx (mg/Nm ³) МДК 1300mg/m ³	МДК 1300mg/m ³	Comments
1		50		400		1300	
2		50		400		1300	
3		50		400		1300	
4		50		400		1300	
5		50		400		1300	
6		50		400		1300	
7		50		400		1300	
8		50		400		1300	
9		50		400		1300	
10		50		400		1300	
11		50		400		1300	
12		50		400		1300	
13		50		400		1300	
14	6	50	304	400	937	1300	
15	6	50	297	400	879	1300	
16	6	50	267	400	541	1300	
17	4	50	167	400	309	1300	
18	6	50	207	400	432	1300	
19	6	50	288	400	411	1300	
20	5	50	273	400	338	1300	
21	6	50	323	400	441	1300	
22	6	50	325	400	361	1300	
23	6	50	288	400	409	1300	
24	6	50	314	400	495	1300	
25	6	50	323	400	461	1300	
26	6	50	271	400	562	1300	
27		50		400		1300	
28		50		400		1300	
29		50		400		1300	
30	5	50	276	400	293	1300	
31	5	50	257	400	593	1300	
Average	6	50	277	400	462	1300	

MLV: Maximum Limit Value

Eplanations: The monthly average values are calculated on the half hour emissin values. Measured values of the concentrations are calculated at 10 vol. of O₂
 Results of the measurements are represented in Nm3 (Nm3 - T=273K, P=101,3kP, dry gas)c