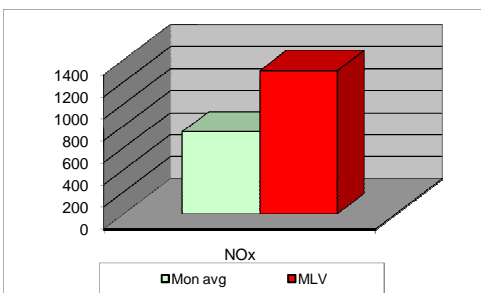
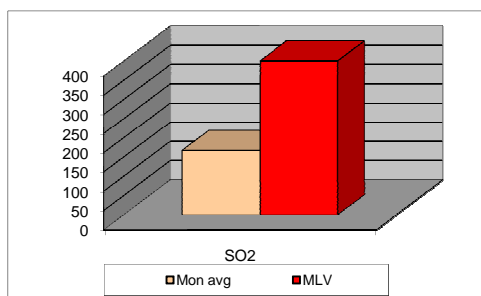
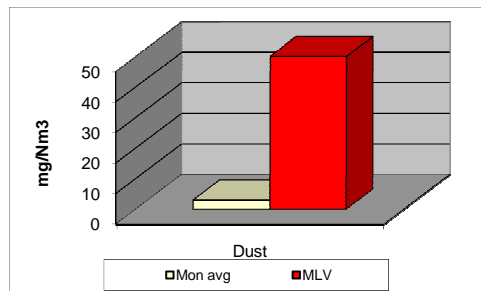


## MONTHLY REPORT FROM EMISSION MONITORING IN TITAN CEMENTARNICA USJE-Kiln No.4



July 2009	Dust (mg/Nm <sup>3</sup> ) МДК 50mg/m <sup>3</sup>	МДК 50mg/m <sup>3</sup>	SO <sub>2</sub> (mg/Nm <sup>3</sup> ) МДК 400mg/m <sup>3</sup>	МДК 400mg/m <sup>3</sup>	NOx (mg/Nm <sup>3</sup> ) МДК 1300mg/m <sup>3</sup>	МДК 1300mg/m <sup>3</sup>	Comments
1	8	50	166	400	855	1300	
2	8	50	150	400	806	1300	
3	8	50	197	400	854	1300	
4	8	50	149	400	769	1300	
5	8	50	163	400	768	1300	
6	7	50	168	400	792	1300	
7	5	50	205	400	802	1300	
8	5	50	227	400	766	1300	
9	5	50	145	400	651	1300	
10	5	50	130	400	605	1300	
11	4	50	135	400	730	1300	
12	4	50	120	400	715	1300	
13	5	50	134	400	678	1300	
14	3	50	150	400	643	1300	
15	1	50	145	400	618	1300	
16	1	50	140	400	485	1300	
17	1	50	138	400	504	1300	
18		50		400		1300	
19	1	50	167	400	823	1300	
20	1	50	161	400	710	1300	
21	1	50	162	400	631	1300	
22	1	50	166	400	734	1300	
23	1	50	170	400	701	1300	
24	1	50	147	400	698	1300	
25	1	50	223	400	710	1300	
26	1	50	201	400	844	1300	
27	1	50	208	400	830	1300	
28	1	50	173	400	866	1300	
29	1	50	183	400	863	1300	
30	1	50	202	400	942	1300	
31	1	50	182	400	916	1300	
<b>Average</b>	<b>3</b>	<b>50</b>	<b>167</b>	<b>400</b>	<b>744</b>	<b>1300</b>	

8

**MLV: Maximum Limit Value**

Eplanations: The monthly average values are calculated on the half hour emissin values. Measured values of the concentrations are calculated at 10 vol. of O<sub>2</sub>  
Results of the measurments are represented in Nm3 (Nm3 - T=273K, P=101,3kP, dry gas)