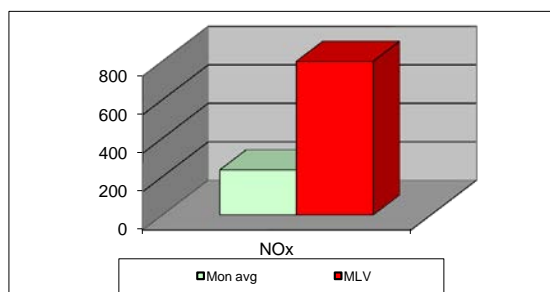
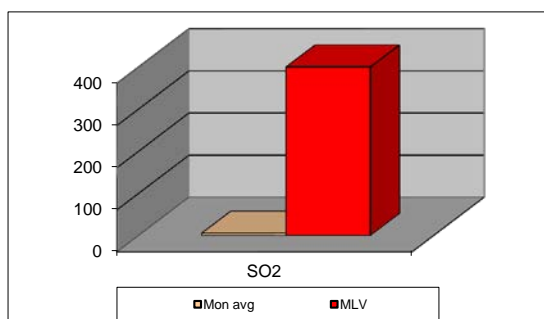
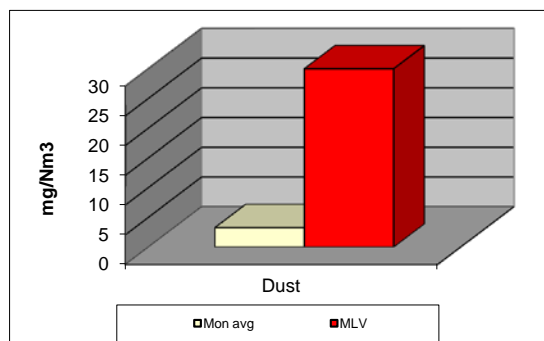


## MONTHLY REPORT FROM EMISSION MONITORING IN TITAN CEMENTARNICA USJE - KILN No.3



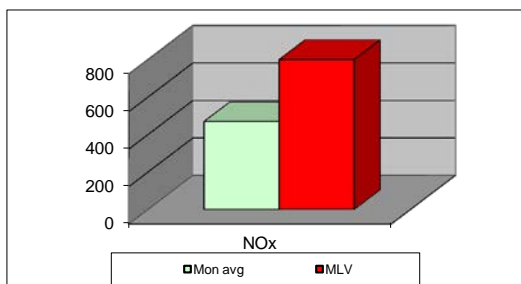
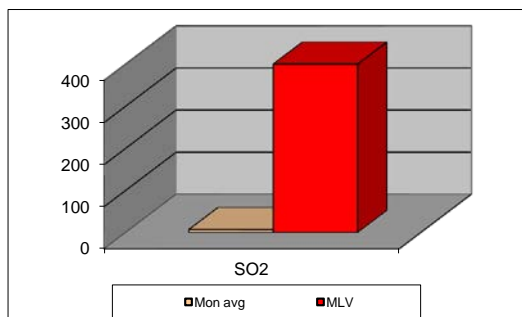
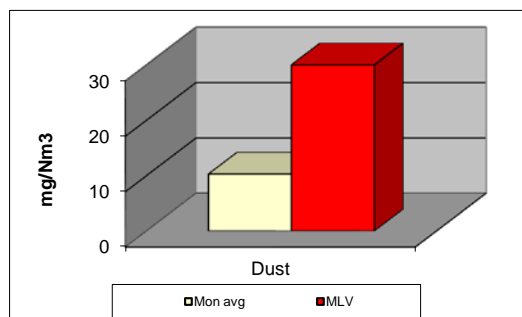
June 2019	Dust (mg/Nm <sup>3</sup> ) МДК 30mg/m <sup>3</sup>	МДК 30mg/m <sup>3</sup>	SO <sub>2</sub> (mg/Nm <sup>3</sup> ) МДК 400mg/m <sup>3</sup>	МДК 400mg/m <sup>3</sup>	NO <sub>x</sub> (mg/Nm <sup>3</sup> ) МДК 800mg/m <sup>3</sup>	МДК 800mg/m <sup>3</sup>	Comments
01.06.2019		30		400		800	
02.06.2019	2,83	30	0,5	400	168,76	800	
03.06.2019	2,94	30	1,44	400	431,59	800	
04.06.2019	2,84	30	1,01	400	351,6	800	
05.06.2019	2,88	30	2,48	400	363,18	800	
06.06.2019	2,75	30	22,06	400	346,94	800	
07.06.2019	2,78	30	17,64	400	282,52	800	
08.06.2019	2,77	30	6,1	400	329,47	800	
09.06.2019	2,77	30	19,7	400	160,37	800	
10.06.2019	2,83	30	10,84	400	187,35	800	
11.06.2019	3,34	30	2,39	400	161,11	800	
12.06.2019	3,22	30	0,27	400	223,05	800	
13.06.2019	3,37	30	0,68	400	215,29	800	
14.06.2019	3,26	30	2,38	400	192,9	800	
15.06.2019	3,29	30	3,81	400	187,53	800	
16.06.2019	3,29	30	0,44	400	217,77	800	
17.06.2019	3,33	30	2,28	400	192,08	800	
18.06.2019	3,32	30	0,29	400	181,39	800	
19.06.2019	3,32	30	0,8	400	229,07	800	
20.06.2019	3,5	30	2,58	400	118,05	800	
21.06.2019	3,42	30	7,65	400	224,19	800	
22.06.2019	3,65	30	0,86	400	235	800	
23.06.2019	3,6	30	0,28	400	319,61	800	
24.06.2019	3,61	30	0,27	400	237,99	800	
25.06.2019	3,65	30	0,29	400	240,83	800	
26.06.2019	3,62	30	5,77	400	173,91	800	
27.06.2019	3,63	30	32,12	400	124,98	800	
28.06.2019	3,61	30	4,7	400	133,52	800	
29.06.2019	3,63	30	0,22	400	203,37	800	
30.06.2019	3,8	30	0,95	400	311,79	800	
<b>Average</b>	<b>3,3</b>	<b>30</b>	<b>5,4</b>	<b>400</b>	<b>234,9</b>	<b>800</b>	

**MLV: Maximum Limit Value**

Explanations: The monthly average values are calculated on the half hour emissin values. Measured values of the concentrations are calculated at 10 vol. of O2  
Results of the measurments are represented in Nm3 (Nm3 - T=273K, P=101,3kP, dry gas)

**Note: Due to service activities kiln no.3 was stopped from 31.05.2019 to 02.06.2019.**

## MONTHLY REPORT FROM EMISSION MONITORING IN TITAN CEMENTARNICA USJE - KILN No.4



June 2019	Dust (mg/Nm <sup>3</sup> ) МДК 30mg/m <sup>3</sup>	МДК 30mg/m <sup>3</sup>	SO <sub>2</sub> (mg/Nm <sup>3</sup> ) МДК 400mg/m <sup>3</sup>	МДК 400mg/m <sup>3</sup>	NO <sub>x</sub> (mg/Nm <sup>3</sup> ) МДК 800mg/m <sup>3</sup>	МДК 800mg/m <sup>3</sup>	Comments
01.06.2019	7,16	30	13,59	400	637,44	800	
02.06.2019	6,99	30	7,36	400	529,08	800	
03.06.2019	6,53	30	8,81	400	585,2	800	
04.06.2019	7,29	30	5,67	400	529,73	800	
05.06.2019	7,06	30	5,14	400	485,59	800	
06.06.2019	8,99	30	5,03	400	520,15	800	
07.06.2019	10,21	30	7,99	400	544,11	800	
08.06.2019	11,07	30	4,72	400	510,28	800	
09.06.2019	10,79	30	9,66	400	518,63	800	
10.06.2019	10,46	30	4,98	400	420,51	800	
11.06.2019	11,08	30	3,99	400	447,98	800	
12.06.2019	13,46	30	4,39	400	377,98	800	
13.06.2019	15,46	30	4,93	400	560,74	800	
14.06.2019	16,21	30	4,46	400	423,79	800	
15.06.2019	13,41	30	5,34	400	516,58	800	
16.06.2019	8,7	30	4,25	400	559,17	800	
17.06.2019	8,27	30	4,88	400	445,13	800	
18.06.2019	10,22	30	3,63	400	561,84	800	
19.06.2019	13,79	30	6,7	400	457,44	800	
20.06.2019	19,16	30	6,04	400	404,46	800	
21.06.2019	25,69	30	13,42	400	400,59	800	
22.06.2019	8,96	30	4,59	400	465,63	800	
23.06.2019	8,14	30	2,67	400	426,18	800	
24.06.2019	6,86	30	3,93	400	368,76	800	
25.06.2019	6,95	30	11,98	400	372,27	800	
26.06.2019	7,02	30	17,28	400	389,6	800	
27.06.2019	7,31	30	3,49	400	445,23	800	
28.06.2019	7,25	30	2,79	400	396,69	800	
29.06.2019	6,5	30	15	400	374,41	800	
30.06.2019	7,43	30	4,21	400	411,61	800	
<b>Average</b>	<b>10,3</b>	<b>30</b>	<b>6,7</b>	<b>400</b>	<b>469,6</b>	<b>800</b>	

**MLV: Maximum Limit Value**

Explanations: The monthly average values are calculated on the half hour emissin values. Measured values of the concentrations are calculated at 10 vol. of O2  
Results of the measurments are represented in Nm3 (Nm3 - T=273K, P=101,3kP, dry gas)

**Note:**