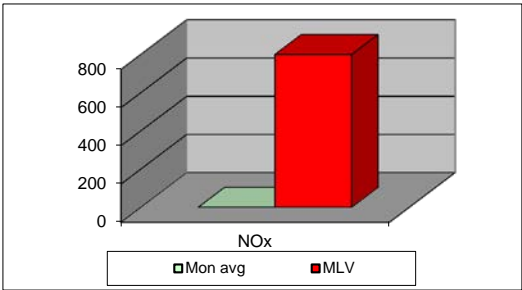
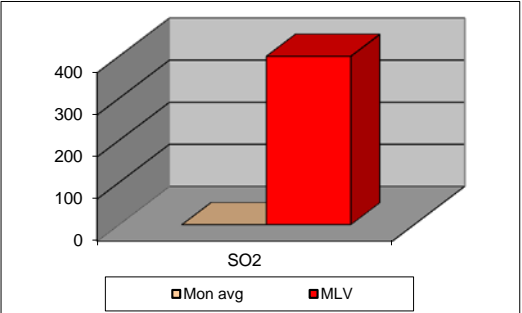
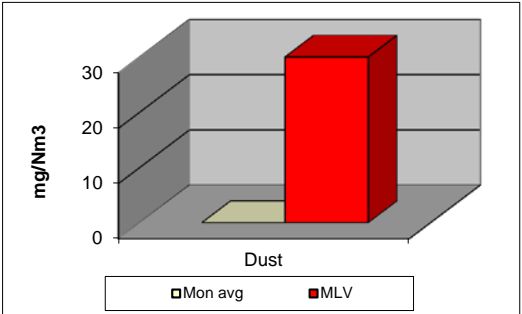


**MONTHLY REPORT FROM EMISSION MONITORING IN TITAN CEMENTARNICA USJE - KILN No.3**

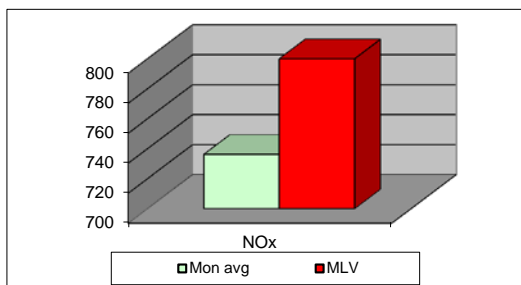
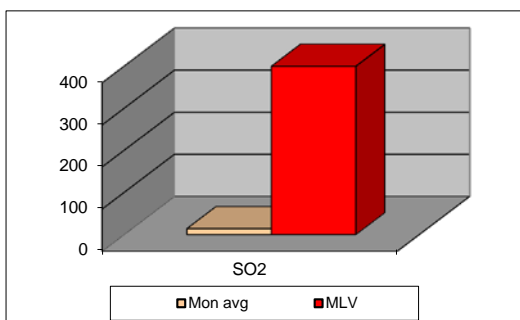
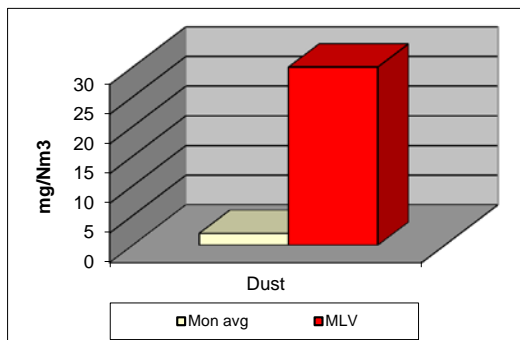


November 2014	Dust	МДК 30mg/m <sup>3</sup>	SO <sub>2</sub>	МДК 400mg/m <sup>3</sup>	NOx	МДК 800mg/m <sup>3</sup>	Comments
	(mg/Nm <sup>3</sup> ) МДК 30mg/m <sup>3</sup>		(mg/Nm <sup>3</sup> ) МДК 400mg/m <sup>3</sup>		(mg/Nm <sup>3</sup> ) МДК 800mg/m <sup>3</sup>		
		30		400		800	
		30		400		800	
		30		400		800	
		30		400		800	
		30		400		800	
		30		400		800	
		30		400		800	
		30		400		800	
		30		400		800	
		30		400		800	
		30		400		800	
		30		400		800	
		30		400		800	
		30		400		800	
		30		400		800	
		30		400		800	
		30		400		800	
		30		400		800	
		30		400		800	
		30		400		800	
		30		400		800	
		30		400		800	
		30		400		800	
		30		400		800	
		30		400		800	
		30		400		800	
		30		400		800	
		30		400		800	
		30		400		800	
		30		400		800	
		30		400		800	
		30		400		800	
		30		400		800	
		30		400		800	
		30		400		800	
		30		400		800	
		30		400		800	
		30		400		800	
		30		400		800	
		30		400		800	
		30		400		800	
		30		400		800	
		30		400		800	
		30		400		800	
		30		400		800	
<b>Average</b>		<b>30</b>		<b>400</b>		<b>800</b>	

**MLV: Maximum Limit Value**

Eplanations: The monthly average values are calculated on the half hour emissin values. Measured values of the concentrations are calculated at 10 vol. of O<sub>2</sub>  
 Results of the measurments are represented in Nm3 (Nm3 - T=273K, P=101,3kP, dry gas)c

## MONTHLY REPORT FROM EMISSION MONITORING IN TITAN CEMENTARNICA USJE - KILN No.4



November 2014	Dust (mg/Nm <sup>3</sup> )	МДК 30mg/m <sup>3</sup>	SO <sub>2</sub> (mg/Nm <sup>3</sup> )	МДК 400mg/m <sup>3</sup>	NO <sub>x</sub> (mg/Nm <sup>3</sup> )	МДК 800mg/m <sup>3</sup>	Comments
	МДК 30mg/m <sup>3</sup>		МДК 400mg/m <sup>3</sup>		МДК 800mg/m <sup>3</sup>		
01.11.2014	1,81	30	13,66	400	825,48	800	
02.11.2014	1,91	30	12,64	400	775,5	800	
03.11.2014	1,87	30	14,59	400	755,22	800	
04.11.2014	1,74	30	15,94	400	739,67	800	
05.11.2014	1,81	30	15,46	400	717,6	800	
06.11.2014	2,05	30	13,78	400	745,31	800	
07.11.2014	2,06	30	13,63	400	750,3	800	
08.11.2014		30	12,89	400	750,56	800	
09.11.2014		30	14,27	400	736,28	800	
10.11.2014	3,96	30	14,11	400	724,85	800	
11.11.2014	2,85	30	12,66	400	747,43	800	
12.11.2014	1,68	30	12,59	400	756,19	800	
13.11.2014	1,67	30	15,01	400	754,85	800	
14.11.2014	1,76	30	12,88	400	754,28	800	
15.11.2014	1,91	30	12,02	400	749,41	800	
16.11.2014	1,83	30	16,57	400	755,13	800	
17.11.2014	1,66	30	12,25	400	747,86	800	
18.11.2014	1,83	30	12,8	400	751,25	800	
19.11.2014	2,01	30	14,94	400	761,14	800	
20.11.2014	1,92	30	13,27	400	736,96	800	
21.11.2014	2,02	30	15,41	400	745,2	800	
22.11.2014	2,23	30	15,6	400	745,67	800	
23.11.2014	2,32	30	15,29	400	740,69	800	
24.11.2014	2,4	30	17,39	400	749,21	800	
25.11.2014	2,13	30	17,16	400	698,76	800	
26.11.2014	2,09	30	16,4	400	699,09	800	
27.11.2014	1,93	30	14,97	400	686,41	800	
28.11.2014	1,72	30	14,71	400	688,08	800	
29.11.2014	1,63	30	15,78	400	706,57	800	
30.11.2014	1,49	30	15,51	400	591,96	800	
<b>Average</b>	<b>2,0</b>	<b>30</b>	<b>14,5</b>	<b>400</b>	<b>736,2</b>	<b>800</b>	

**MLV: Maximum Limit Value**

Eplanations: The monthly average values are calculated on the half hour emissin values. Measured values of the concentrations are calculated at 10 vol. of O<sub>2</sub>  
 Results of the measurments are represented in Nm3 (Nm3 - T=273K, P=101,3kP, dry gas)c