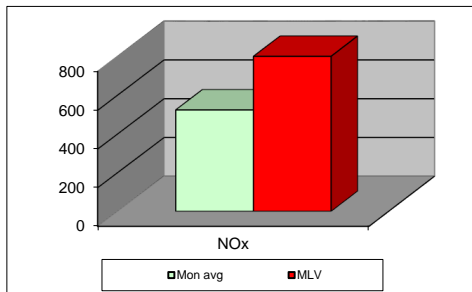
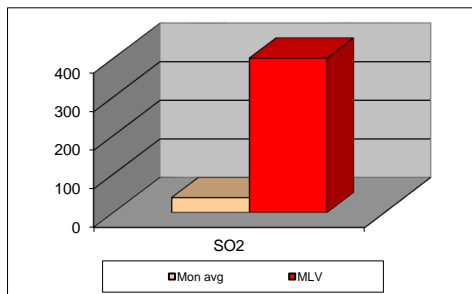
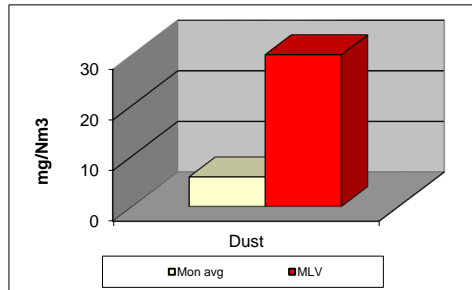


### MONTHLY REPORT FROM EMISSION MONITORING IN TITAN CEMENTARNICA USJE - KILN No.3



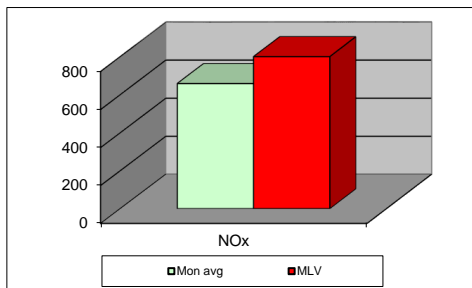
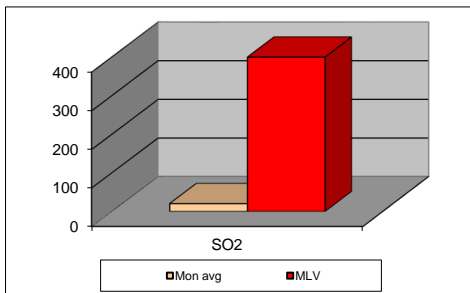
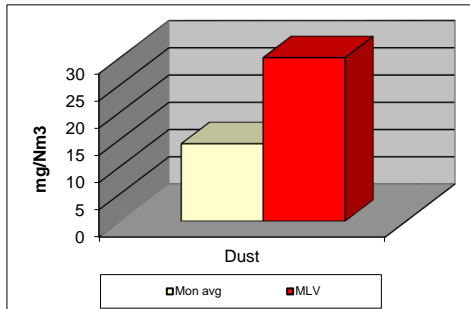
окт.21	Dust (mg/Nm <sup>3</sup> ) МДК 30mg/m <sup>3</sup>	МДК 30mg/m <sup>3</sup>	SO <sub>2</sub> (mg/Nm <sup>3</sup> ) МДК 400mg/m <sup>3</sup>	МДК 400mg/m <sup>3</sup>	NOx (mg/Nm <sup>3</sup> ) МДК 800mg/m <sup>3</sup>	МДК 800mg/m <sup>3</sup>	Comments
01.10.2021	5,85	30	4,61	400	687,46	800	
02.10.2021	5,61	30	3,85	400	626,92	800	
03.10.2021	5,62	30	10,3	400	671,68	800	
04.10.2021	5,71	30	5,58	400	630,18	800	
05.10.2021	5,48	30	7,08	400	530,7	800	
06.10.2021	5,94	30	41,92	400	409,38	800	
07.10.2021	6,1	30	1,59	400	426,2	800	
08.10.2021	6,28	30	43,74	400	571,93	800	
09.10.2021	5,87	30	97,92	400	552,18	800	
10.10.2021	5,39	30	124,6	400	655,23	800	
11.10.2021	6,22	30	90,36	400	550,31	800	
12.10.2021	6,18	30	100,72	400	543,58	800	
13.10.2021	5,59	30	153,82	400	498,34	800	
14.10.2021	5,49	30	72,62	400	393,18	800	
15.10.2021	5,33	30	107,17	400	511,77	800	
16.10.2021	5,39	30	108,22	400	475,91	800	
17.10.2021	5,45	30	99,31	400	458,1	800	
18.10.2021	6,57	30	49,51	400	497,87	800	
19.10.2021	5,71	30	16,94	400	516,64	800	
20.10.2021	6,38	30	5,38	400	507,49	800	
21.10.2021	6,32	30	0,27	400	527,36	800	
22.10.2021	6,32	30	13,26	400	547,65	800	
23.10.2021	5,33	30	16,46	400	525,09	800	
24.10.2021	5,15	30	10,52	400	384,95	800	
25.10.2021	5,69	30	0,71	400	477,12	800	
26.10.2021	5,51	30	12,82	400	628,92	800	
27.10.2021	5,66	30	45,02	400	603,41	800	
28.10.2021	5,69	30	40,08	400	546,27	800	
29.10.2021	5,26	30	26,21	400	444,02	800	
30.10.2021	5,47	30	25,02	400	449,87	800	
31.10.2021	7,52	30	9,83	400	483,89	800	
<b>Average</b>	<b>5,9</b>	<b>30</b>	<b>38,7</b>	<b>400</b>	<b>524,2</b>	<b>800</b>	

**MLV: Maximum Limit Value**

Explanations: The monthly average values are calculated on the half hour emissin values. Measured values of the concentrations are calculated at 10 vol. of O2  
Results of the measurments are represented in Nm3 (Nm3 - T=273K, P=101,3kP, dry gas)

**Note:**

## MONTHLY REPORT FROM EMISSION MONITORING IN TITAN CEMENTARNICA USJE - KILN No.4



окт.21	Dust (mg/Nm <sup>3</sup> ) МДК 30mg/m <sup>3</sup>	МДК 30mg/m <sup>3</sup>	SO <sub>2</sub> (mg/Nm <sup>3</sup> ) МДК 400mg/m <sup>3</sup>	МДК 400mg/m <sup>3</sup>	NOx (mg/Nm <sup>3</sup> ) МДК 800mg/m <sup>3</sup>	МДК 800mg/m <sup>3</sup>	Comments
01.10.2021	9,01	30	6,37	400	750,74	800	
02.10.2021	8,57	30	8,28	400	720,03	800	
03.10.2021	8,87	30	11,87	400	647,34	800	
04.10.2021	8,04	30	15,73	400	647,86	800	
05.10.2021	8,99	30	34,69	400	716,71	800	
06.10.2021	10	30	71,69	400	620,28	800	
07.10.2021	8,72	30	17,12	400	684,88	800	
08.10.2021	7,77	30	29,29	400	676,42	800	
09.10.2021	10,73	30	42,46	400	663,4	800	
10.10.2021	12,75	30	5,24	400	678,53	800	
11.10.2021	11,4	30	46,65	400	662,91	800	
12.10.2021	16,18	30	36,56	400	766,76	800	
13.10.2021	15,84	30	64,41	400	770,46	800	
14.10.2021		30		400		800	
15.10.2021	18,14	30	13,51	400	673,56	800	
16.10.2021	21,74	30	16,7	400	775,88	800	
17.10.2021	18,68	30	25,47	400	660,88	800	
18.10.2021	19,54	30	53,79	400	626,2	800	
19.10.2021	18,43	30	61,57	400	604,04	800	
20.10.2021	19,1	30	3,03	400	614,93	800	
21.10.2021	17,53	30	3,26	400	593,82	800	
22.10.2021	16,84	30	6,47	400	625,02	800	
23.10.2021	16,75	30	21,13	400	708,01	800	
24.10.2021	18,85	30	15,61	400	724,1	800	
25.10.2021	16,83	30	9,58	400	695,85	800	
26.10.2021	14,2	30	10,3	400	746,87	800	
27.10.2021	12,69	30	5,53	400	728,57	800	
28.10.2021	10,26	30	12,4	400	751,74	800	
29.10.2021	15,47	30	1,57	400	647,55	800	
30.10.2021	16,8	30	0,55	400	460,75	800	
31.10.2021	18,93	30	0,08	400	455,76	800	
<b>Average</b>	<b>14,20</b>	<b>30</b>	<b>20,53</b>	<b>400</b>	<b>658,71</b>	<b>800</b>	

**MLV: Maximum Limit Value**

Explanations: The monthly average values are calculated on the half hour emission values. Measured values of the concentrations are calculated at 10 vol. of O<sub>2</sub>  
Results of the measurements are represented in Nm<sup>3</sup> (Nm<sup>3</sup> - T=273K, P=101,3kP, dry gas)

**Note:**