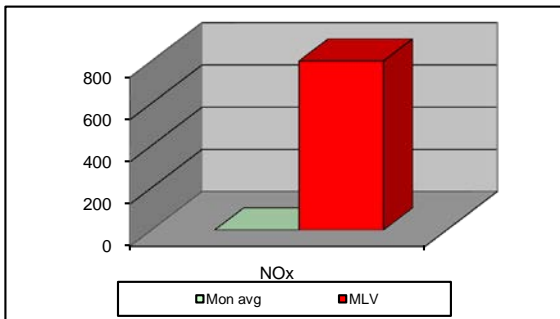
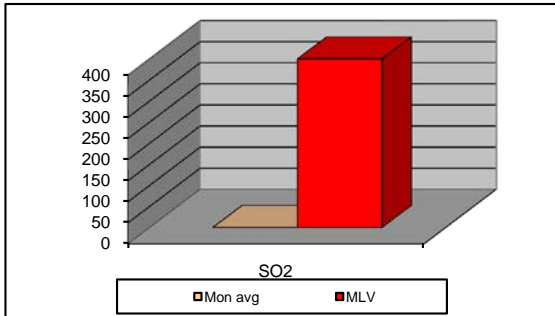
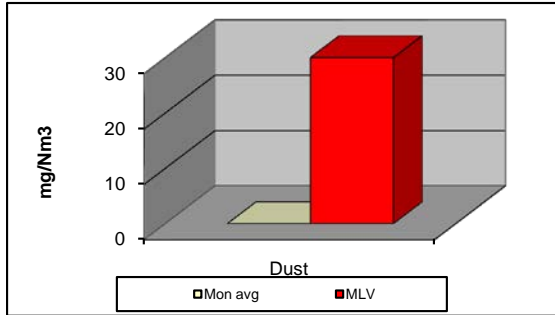


**MONTHLY REPORT FROM EMISSION MONITORING IN TITAN CEMENTARNICA USJE - KILN No.3**



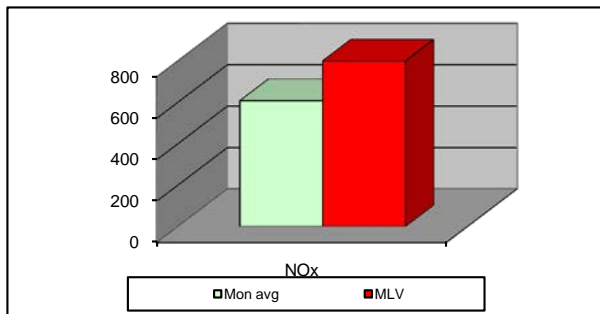
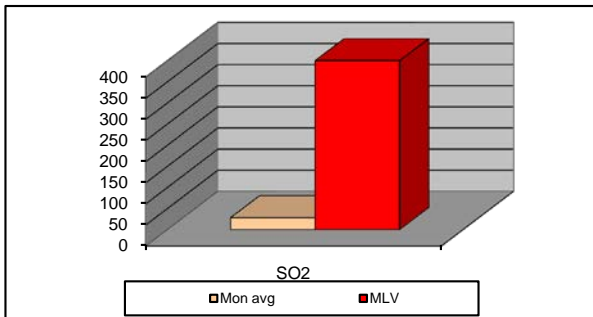
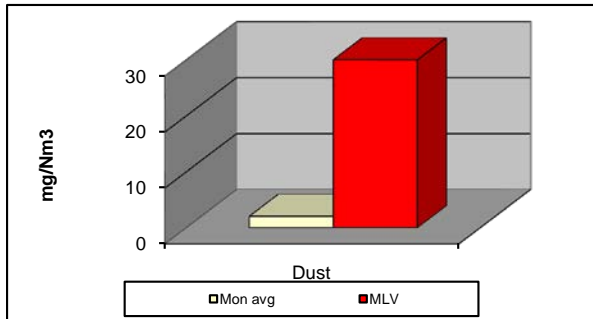
March 2015	Dust (mg/Nm <sup>3</sup> ) МДК 30mg/m <sup>3</sup>	МДК 30mg/m <sup>3</sup>	SO <sub>2</sub> (mg/Nm <sup>3</sup> ) МДК 400mg/m <sup>3</sup>	МДК 400mg/m <sup>3</sup>	NO <sub>x</sub> (mg/Nm <sup>3</sup> ) МДК 800mg/m <sup>3</sup>	МДК 800mg/m <sup>3</sup>	Comments
		30		400		800	
		30		400		800	
		30		400		800	
		30		400		800	
		30		400		800	
		30		400		800	
		30		400		800	
		30		400		800	
		30		400		800	
		30		400		800	
		30		400		800	
		30		400		800	
		30		400		800	
		30		400		800	
		30		400		800	
		30		400		800	
		30		400		800	
		30		400		800	
		30		400		800	
		30		400		800	
		30		400		800	
		30		400		800	
		30		400		800	
		30		400		800	
		30		400		800	
		30		400		800	
		30		400		800	
		30		400		800	
		30		400		800	
		30		400		800	
		30		400		800	
		30		400		800	
		30		400		800	
<b>Average</b>		<b>30</b>		<b>400</b>		<b>800</b>	

**MLV: Maximum Limit Value**

Explanations: The monthly average values are calculated on the half hour emissin values. Measured values of the concentrations are calculated at 10 vol. of O2  
Results of the measurments are represented in Nm3 (Nm3 - T=273K, P=101,3kP, dry gas)c

**Note: Kiln no.3 was not In operchion during March 2015**

## MONTHLY REPORT FROM EMISSION MONITORING IN TITAN CEMENTARNICA USJE - KILN No.4



March 2015	Dust	МДК 30mg/m <sup>3</sup>	SO <sub>2</sub>	МДК 400mg/m <sup>3</sup>	NO <sub>x</sub>	МДК 800mg/m <sup>3</sup>	Comments
	(mg/Nm <sup>3</sup> ) МДК 30mg/m <sup>3</sup>		(mg/Nm <sup>3</sup> ) МДК 400mg/m <sup>3</sup>		(mg/Nm <sup>3</sup> ) МДК 800mg/m <sup>3</sup>		
01.03.2015	1,83	30	48,69	400	677,58	800	
02.03.2015	2,01	30	35,35	400	690,16	800	
03.03.2015	1,87	30	18,15	400	684,13	800	
04.03.2015	2,05	30	17,71	400	603,28	800	
05.03.2015	2,17	30	16,84	400	577,48	800	
06.03.2015	2,15	30	15,96	400	579,09	800	
07.03.2015	2,29	30	19,02	400	609,87	800	
08.03.2015	2,16	30	18,92	400	622,1	800	
09.03.2015	2,19	30	28,86	400	609,31	800	
10.03.2015	1,99	30	49,35	400	593,86	800	
11.03.2015	2,05	30	51,65	400	601,21	800	
12.03.2015	2,1	30	70,64	400	631,87	800	
13.03.2015	1,97	30	39,76	400	576,55	800	
14.03.2015	1,88	30	26,68	400	582,96	800	
15.03.2015	2,01	30	18,98	400	600,01	800	
16.03.2015	2,04	30	29,29	400	587,08	800	
17.03.2015	2,04	30	44,36	400	600,41	800	
18.03.2015	2,34	30	47,79	400	598,73	800	
19.03.2015	2,43	30	23,02	400	591,56	800	
20.03.2015	2,26	30	17,15	400	628,2	800	
21.03.2015	2,03	30	17,58	400	654,64	800	
22.03.2015	2,1	30	18,55	400	643,69	800	
23.03.2015	1,93	30	18,95	400	687,57	800	
24.03.2015	1,8	30	17,9	400	660,62	800	
25.03.2015	1,73	30	18,97	400	553,03	800	
26.03.2015	1,78	30	19,85	400	591,85	800	
27.03.2015	1,74	30	22,29	400	553,13	800	
28.03.2015	2,04	30	24,57	400	602,03	800	
29.03.2015	1,98	30	30,19	400	564,1	800	
30.03.2015	1,83	30	28,68	400	569,35	800	
31.03.2015	1,73	30	21,88	400	509,95	800	
<b>Average</b>	<b>2,0</b>	<b>30</b>	<b>28,3</b>	<b>400</b>	<b>607,6</b>	<b>800</b>	

**MLV: Maximum Limit Value**

Explanations: The monthly average values are calculated on the half hour emissin values. Measured values of the concentrations are calculated at 10 vol. of O2  
Results of the measurments are represented in Nm3 (Nm3 - T=273K, P=101,3kP, dry gas)c