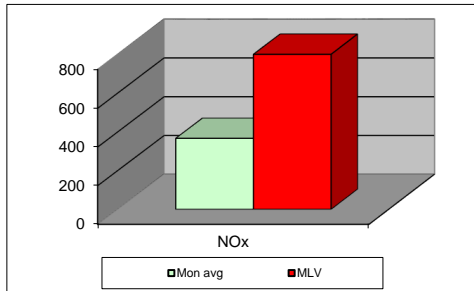
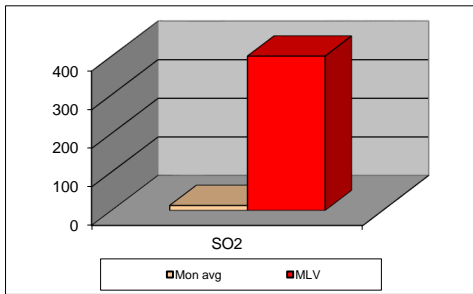
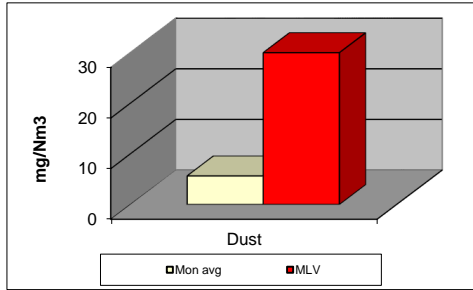


MONTHLY REPORT FROM EMISSION MONITORING IN TITAN CEMENTARNICA USJE - KILN No.3



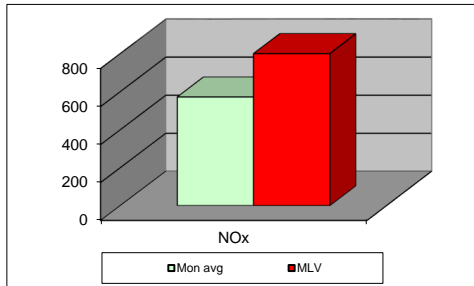
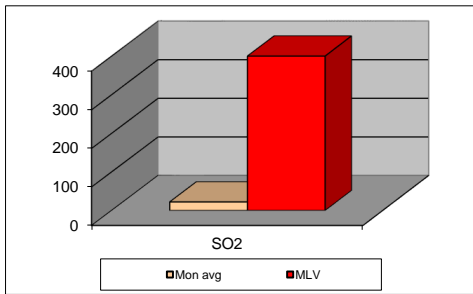
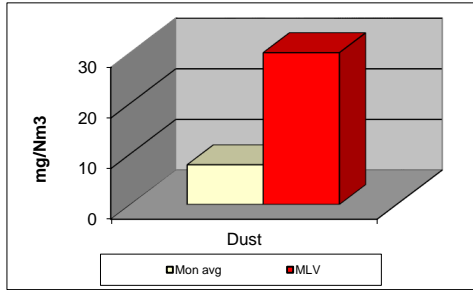
дек.21	Dust (mg/Nm ³) МДК 30mg/m ³	МДК 30mg/m ³	SO ₂ (mg/Nm ³) МДК 400mg/m ³	МДК 400mg/m ³	NOx (mg/Nm ³) МДК 800mg/m ³	МДК 800mg/m ³	Comments
01.12.2021	5,75	30	18,07	400	465,75	800	
02.12.2021	5,73	30	10,87	400	392,11	800	
03.12.2021	5,17	30	37,96	400	421,26	800	
04.12.2021	5,78	30	0,01	400	377,2	800	
05.12.2021	5,93	30	0	400	431,31	800	
06.12.2021	5,47	30	1,73	400	256,39	800	
07.12.2021	5,7	30	19,97	400	353,03	800	
08.12.2021	5,42	30	36,47	400	209,28	800	
09.12.2021		30		400		800	
10.12.2021		30		400		800	
11.12.2021		30		400		800	
12.12.2021		30		400		800	
13.12.2021		30		400		800	
14.12.2021		30		400		800	
15.12.2021		30		400		800	
16.12.2021		30		400		800	
17.12.2021		30		400		800	
18.12.2021		30		400		800	
19.12.2021		30		400		800	
20.12.2021		30		400		800	
21.12.2021		30		400		800	
22.12.2021		30		400		800	
23.12.2021		30		400		800	
24.12.2021		30		400		800	
25.12.2021		30		400		800	
26.12.2021		30		400		800	
27.12.2021		30		400		800	
28.12.2021		30		400		800	
29.12.2021		30		400		800	
30.12.2021		30		400		800	
31.12.2021		30		400		800	
Average	5,7	30	13,1	400	367,0	800	

MLV: Maximum Limit Value

Explanations: The monthly average values are calculated on the half hour emissin values. Measured values of the concentrations are calculated at 10 vol. of O2
Results of the measurments are represented in Nm3 (Nm3 - T=273K, P=101,3kP, dry gas)

Note: Due to annual maintenance, Kiln 3 is not in operation from 09.12.2021

MONTHLY REPORT FROM EMISSION MONITORING IN TITAN CEMENTARNICA USJE - KILN No.4



дек.21	Dust (mg/Nm ³) МДК 30mg/m ³	МДК 30mg/m ³	SO ₂ (mg/Nm ³) МДК 400mg/m ³	МДК 400mg/m ³	NOx (mg/Nm ³) МДК 800mg/m ³	МДК 800mg/m ³	Comments
01.12.2021	12,07	30	6,88	400	458,49	800	
02.12.2021	13,23	30	7,73	400	438,05	800	
03.12.2021	7,71	30	7,68	400	576,95	800	
04.12.2021	6,93	30	7,79	400	530,34	800	
05.12.2021	9,41	30	11,54	400	548,7	800	
06.12.2021	7,19	30	9,62	400	477,91	800	
07.12.2021	6,68	30	8,18	400	484,03	800	
08.12.2021	6,5	30	7,28	400	411,23	800	
09.12.2021	8,54	30	10,35	400	546,48	800	
10.12.2021	7,11	30	4,96	400	433,58	800	
11.12.2021	7,78	30	2,88	400	318,6	800	
12.12.2021	7,54	30	3,18	400	293,25	800	
13.12.2021	7,64	30	2,93	400	416,75	800	
14.12.2021	6,7	30	1,84	400	607,11	800	
15.12.2021	6,65	30	2,73	400	651,7	800	
16.12.2021	0	30	0	400	0	800	
17.12.2021	7,43	30	5,28	400	759,71	800	
18.12.2021	6,38	30	19,44	400	606,45	800	
19.12.2021	6,39	30	3,6	400	661,64	800	
20.12.2021	6,87	30	31,17	400	677,17	800	
21.12.2021	6,93	30	25,28	400	612,83	800	
22.12.2021	7,76	30	9,88	400	652,41	800	
23.12.2021	7,05	30	16,96	400	659,81	800	
24.12.2021	8,52	30	12,65	400	693,67	800	
25.12.2021	7,79	30	56,15	400	633,52	800	
26.12.2021	8,1	30	21,65	400	756,83	800	
27.12.2021	8,12	30	5,45	400	772,17	800	
28.12.2021	9,87	30	100,24	400	775,7	800	
29.12.2021	8	30	124,08	400	708,28	800	
30.12.2021	7,17	30	241,88	400	743,92	800	
31.12.2021	6,78	30	143,53	400	747,94	800	
Average	7,9	30	22,2	400	572,4	800	

MLV: Maximum Limit Value

Explanations: The monthly average values are calculated on the half hour emissin values. Measured values of the concentrations are calculated at 10 vol. of O2
Results of the measurments are represented in Nm3 (Nm3 - T=273K, P=101,3kP, dry gas)

Note: