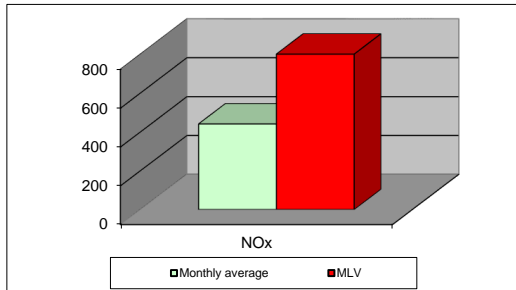
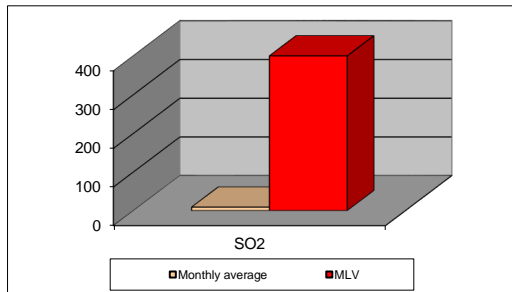
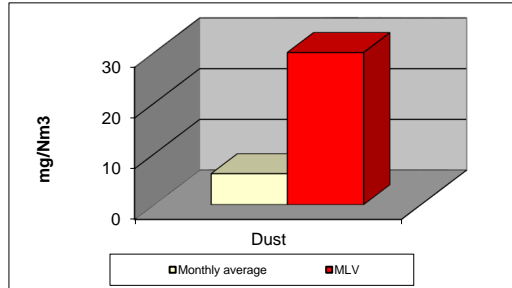


MONTHLY REPORT FROM EMISSION MONITORING IN TITAN CEMENTARNICA USJE - KILN No.3



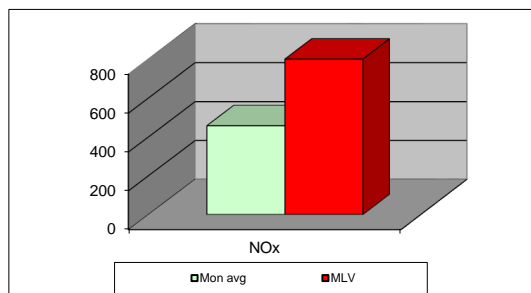
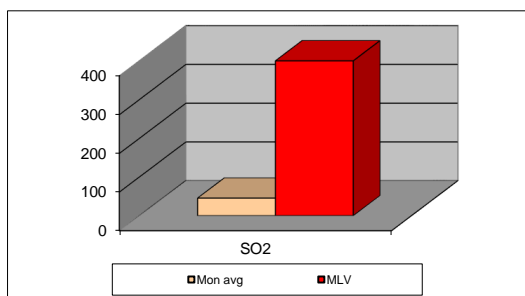
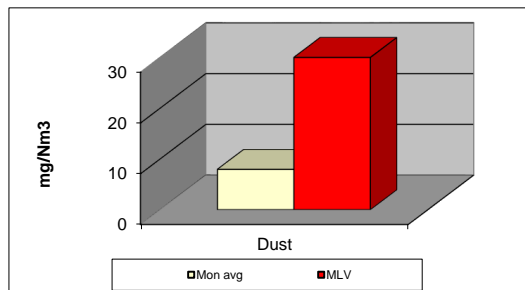
jan.26	Dust (mg/Nm ³) МДК 30mg/m ³	МДК 30mg/m ³	SO ₂ (mg/Nm ³) МДК 400mg/m ³	МДК 400mg/m ³	NOx (mg/Nm ³) МДК 800mg/m ³	МДК 800mg/m ³	Comments
01.01.2026	5.36	30	8.08	400	293.45	800	
02.01.2026	7.47	30	11.37	400	448.81	800	
03.01.2026	6.09	30	9.81	400	445.51	800	
04.01.2026	5.74	30	8.86	400	458.48	800	
05.01.2026	5.31	30	9.58	400	417.96	800	
06.01.2026	5.07	30	9.75	400	408.96	800	
07.01.2026	5.32	30	9.92	400	442.8	800	
08.01.2026	6.04	30	10.22	400	455.46	800	
09.01.2026	5.83	30	9.39	400	455.66	800	
10.01.2026	5.73	30	8.95	400	374.99	800	
11.01.2026	6.3	30	10.29	400	462.02	800	
12.01.2026	6.09	30	9.2	400	443.04	800	
13.01.2026	6.5	30	7.08	400	493.35	800	
14.01.2026	6.84	30	7.96	400	412.45	800	
15.01.2026	7.19	30	7.72	400	496.59	800	
16.01.2026	7.90	30	7.14	400	505.84	800	
17.01.2026	0.00	30	0.00	400	0.00	800	
18.01.2026	0.00	30	0.00	400	0.00	800	
19.01.2026	0.00	30	0.00	400	0.00	800	
20.01.2026	0.00	30	0.00	400	0.00	800	
21.01.2026	0.00	30	0.00	400	0.00	800	
22.01.2026	0.00	30	0.00	400	0.00	800	
23.01.2026	0.00	30	0.00	400	0.00	800	
24.01.2026	0.00	30	0.00	400	0.00	800	
25.01.2026	0.00	30	0.00	400	0.00	800	
26.01.2026	0.00	30	0.00	400	0.00	800	
27.01.2026	0.00	30	0.00	400	0.00	800	
28.01.2026	0.00	30	0.00	400	0.00	800	
29.01.2026	0.00	30	0.00	400	0.00	800	
30.01.2026	0.00	30	0.00	400	0.00	800	
31.01.2026	0.00	30	0.00	400	0.00	800	
Average	6.11	30	9.05	400	441.30	800	

MLV: Maximum Limit Value

Explanations: The monthly average values are calculated on the half hour emissin values. Measured values of the concentrations are calculated at 10 vol. of O₂
 Results of the measurments are represented in Nm3 (Nm3 - T=273K, P=101,3kP, dry gas)

Note: Due to annual maintenance, Kiln 3 is stoped on 01.01.2024

MONTHLY REPORT FROM EMISSION MONITORING IN TITAN CEMENTARNICA USJE - KILN No.4



jan.26	Dust (mg/Nm ³) МДК 30mg/m ³	МДК 30mg/m ³	SO ₂ (mg/Nm ³) МДК 400mg/m ³	МДК 400mg/m ³	NOx (mg/Nm ³) МДК 800mg/m ³	МДК 800mg/m ³	Comments
01.01.2026	0.00	30	0.00	400	0.00	800	
02.01.2026	0.00	30	0.00	400	0.00	800	
03.01.2026	0.00	30	0.00	400	0.00	800	
04.01.2026	0.00	30	0.00	400	0.00	800	
05.01.2026	0.00	30	0.00	400	0.00	800	
06.01.2026	0.00	30	0.00	400	0.00	800	
07.01.2026	0.00	30	0.00	400	0.00	800	
08.01.2026	0.00	30	0.00	400	0.00	800	
09.01.2026	0.00	30	0.00	400	0.00	800	
10.01.2026	0.00	30	0.00	400	0.00	800	
11.01.2026	0.00	30	0.00	400	0.00	800	
12.01.2026	0.00	30	0.00	400	0.00	800	
13.01.2026	0.00	30	0.00	400	0.00	800	
14.01.2026	0.00	30	0.00	400	0.00	800	
15.01.2026	0.00	30	0.00	400	0.00	800	
16.01.2026	0.00	30	0.00	400	0.00	800	
17.01.2026	0.00	30	0.00	400	0.00	800	
18.01.2026	0.00	30	0.00	400	0.00	800	
19.01.2026	0.00	30	0.00	400	0.00	800	
20.01.2026	0.00	30	0.00	400	0.00	800	
21.01.2026	0.00	30	0.00	400	0.00	800	
22.01.2026	0.00	30	0.00	400	0.00	800	
23.01.2026	0.00	30	0.00	400	0.00	800	
24.01.2026	0.00	30	0.00	400	0.00	800	
25.01.2026	0.00	30	0.00	400	0.00	800	
26.01.2026	0.00	30	0.00	400	0.00	800	
27.01.2026	0.00	30	0.00	400	0.00	800	
28.01.2026	0.00	30	0.00	400	0.00	800	
29.01.2026	10.36	30	42.71	400	426.51	800	
30.01.2026	6.39	30	46.10	400	466.01	800	
31.01.2026	6.59	30	47.69	400	483.42	800	
Average	7.95	30	45.44	400	457.91	800	

MLV: Maximum Limit Value

Explanations: The monthly average values are calculated on the half hour emissin values. Measured values of the concentrations are calculated at 10 vol. of O2
Results of the measurments are represented in Nm3 (Nm3 - T=273K, P=101,3kP, dry gas)

Note: Due to annual maintenance, Kiln 4 is stoped on 17.01.2024