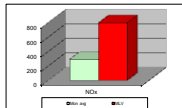
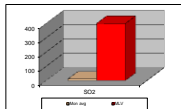
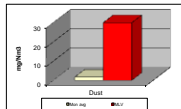


MONTHLY REPORT FROM EMISSION MONITORING IN TITAN CEMENTARница USJE - KILN No.3



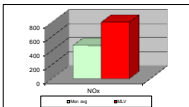
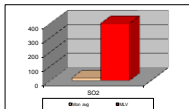
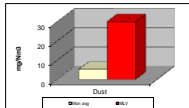
December 2018	Dust (mg/Nm^3) MK 30 mg/m^3	SO ₂ (mg/Nm^3) MK 400 mg/m^3	NO _x (mg/Nm^3) MK 800 mg/m^3	Comments	
01.12.2018	2,01	30	8,53	400	800
02.12.2018	1,93	30	2,51	400	800
03.12.2018		30		400	800
04.12.2018		30		400	800
05.12.2018		30		400	800
06.12.2018		30		400	800
07.12.2018		30		400	800
08.12.2018		30		400	800
09.12.2018		30		400	800
10.12.2018		30		400	800
11.12.2018		30		400	800
12.12.2018		30		400	800
13.12.2018		30		400	800
14.12.2018	0,78	30	0,66	400	594,82
15.12.2018	0,78	30	10,52	400	256,5
16.12.2018	0,73	30	0,55	400	102,42
17.12.2018	0,89	30	0,32	400	291,84
18.12.2018	0,75	30	0,55	400	281,91
19.12.2018	1,55	30	1,46	400	422,32
20.12.2018	2,03	30	38,4	400	284,02
21.12.2018	2,05	30	1,78	400	175,42
22.12.2018	2,15	30	2,53	400	358,07
23.12.2018	1,9	30	3,66	400	280,12
24.12.2018	1,94	30	2,95	400	369,71
25.12.2018	1,95	30	9,55	400	411,73
26.12.2018	1,89	30	32,02	400	320,15
27.12.2018	1,9	30	7,74	400	108,84
28.12.2018	1,86	30	25,72	400	233,97
29.12.2018	1,88	30	12,65	400	350,03
30.12.2018	1,9	30	8,52	400	430,62
31.12.2018	1,9	30	14,14	400	419,93
Average	1,6	30	9,2	400	293,5

MLV: Maximum Limit Value

Explanations: The monthly average values are calculated on the half hour emission values. Measured values of the concentrations are calculated at 10 vol. of O₂. Results of the measurements are represented in Nm³ (Nm³ - T=273K, P=101,3kPa, dry gas)

Note: Kiln no.3 that was not in operation in the period from 02.12.2018 - 14.12.2018.

MONTHLY REPORT FROM EMISSION MONITORING IN TITAN CEMENTARNICA USJE - KILN No.4



December 2018	Dust (mg/Nm³) MDK 30mg/m³	MDK 30mg/m³	SO₂ (mg/Nm³) MDK 400mg/m³	MDK 400mg/m³	NOx (mg/Nm³) MDK 800mg/m³	MDK 800mg/m³	Comments
01.12.2018	4.6	30	65.56	400	446.59	800	
02.12.2018	5.35	30	58.19	400	383.63	800	
03.12.2018	5.51	30	40.67	400	365.24	800	
04.12.2018	9.01	30	123.46	400	548.84	800	
05.12.2018	5.22	30	34.11	400	517.42	800	
06.12.2018	4.98	30	16.81	400	699.23	800	
07.12.2018	4.52	30	11.64	400	635.85	800	
08.12.2018	5.72	30	5.11	400	625.14	800	
09.12.2018	7.38	30	11.33	400	615.42	800	
10.12.2018	6.32	30	9.5	400	439.76	800	
11.12.2018	5.65	30	20.84	400	382.07	800	
12.12.2018	4.74	30	14.14	400	333.5	800	
13.12.2018	4.52	30	5.09	400	472.33	800	
14.12.2018	5.79	30	12.12	400	365.38	800	
15.12.2018	5.87	30	0.75	400	284.63	800	
16.12.2018	5.12	30	0.23	400	154.97	800	
17.12.2018		30		400		800	
18.12.2018		30		400		800	
19.12.2018	5.52	30	30.68	400	620.33	800	
20.12.2018	4.2	30	7.35	400	566.88	800	
21.12.2018	3.72	30	21.91	400	570.67	800	
22.12.2018	3.98	30	0.35	400	487	800	
23.12.2018	4.02	30	0.25	400	497.05	800	
24.12.2018	3.79	30	0.89	400	462.72	800	
25.12.2018	4.14	30	0.87	400	401.76	800	
26.12.2018	4.63	30	1.53	400	444.48	800	
27.12.2018	5.32	30	0.55	400	399.94	800	
28.12.2018		30		400		800	
29.12.2018		30		400		800	
30.12.2018		30		400		800	
31.12.2018		30		400		800	
Average	5.2	30	18.9	400	470.6	800	

MLV: Maximum Limit Value

Explanations: The monthly average values are calculated on the half hour emission values. Measured values of the concentrations are calculated at 10 vol. of O2

Results of the measurements are represented in Nm3 (Nm3 - T=273K, P=101.3kPa, dry gas)

Note: Kiln no.4 for clinker production was out of operation from 16.12.2018 until 19.12.2018. Due to overhaul activities kiln no.4 was stopped from 27.12.2018.