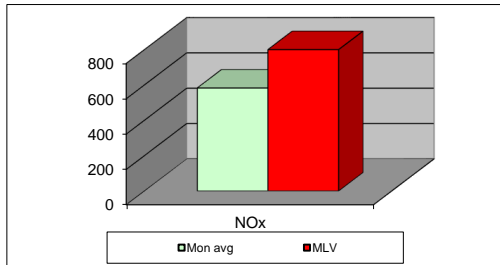
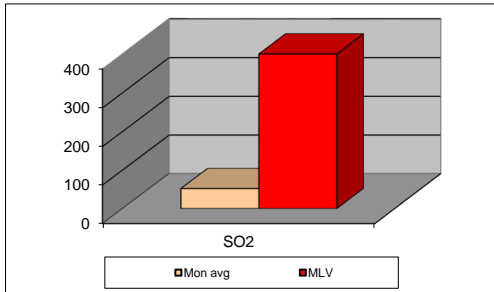
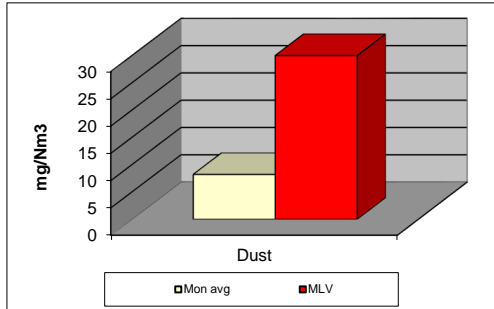


### MONTHLY REPORT FROM EMISSION MONITORING IN TITAN CEMENTARNICA USJE - KILN No.3



jun.22	Dust (mg/Nm <sup>3</sup> )	МДК 30mg/m <sup>3</sup>	SO <sub>2</sub> (mg/Nm <sup>3</sup> )	МДК 400mg/m <sup>3</sup>	NOx (mg/Nm <sup>3</sup> )	МДК 800mg/m <sup>3</sup>	Comments
	МДК 30mg/m <sup>3</sup>		МДК 400mg/m <sup>3</sup>		МДК 800mg/m <sup>3</sup>		
01.06.2022	7,92	30	125,48	400	524,59	800	
02.06.2022	7,3	30	111,16	400	487,23	800	
03.06.2022	7,23	30	22,18	400	512,33	800	
04.06.2022	7,76	30	137,61	400	438,25	800	
05.06.2022	6,85	30	199,26	400	23,75	800	
06.06.2022		30		400		800	
07.06.2022		30		400		800	
08.06.2022	7,92	30	7,33	400	794,16	800	
09.06.2022	7,44	30	31,15	400	719,9	800	
10.06.2022	7,45	30	32,17	400	652,46	800	
11.06.2022	7,17	30	52,86	400	774,17	800	
12.06.2022	7,64	30	6,23	400	669,51	800	
13.06.2022	8,24	30	20,85	400	618,35	800	
14.06.2022	10,4	30	5,3	400	680,14	800	
15.06.2022	9,39	30	2,63	400	620,58	800	
16.06.2022	9,14	30	5,56	400	527,57	800	
17.06.2022	9,63	30	2,59	400	586,2	800	
18.06.2022	9,72	30	7,56	400	571,98	800	
19.06.2022	8,05	30	4,01	400	587	800	
20.06.2022	7,18	30	1,92	400	644,33	800	
21.06.2022	7,66	30	20,71	400	681,07	800	
22.06.2022	7,95	30	3,26	400	597,74	800	
23.06.2022	7,7	30	20,01	400	593,6	800	
24.06.2022	7,65	30	9,23	400	534,83	800	
25.06.2022	8,17	30	56,53	400	498,92	800	
26.06.2022	7,67	30	162,47	400	476,91	800	
27.06.2022	7,73	30	163,64	400	489,23	800	
28.06.2022	7,95	30	148,59	400	526,19	800	
29.06.2022	7,68	30	53,74	400	468,05	800	
30.06.2022	8,02	30	132,45	400	545,6	800	
<b>Average</b>	<b>8,2</b>	<b>30</b>	<b>52,0</b>	<b>400</b>	<b>582,8</b>	<b>800</b>	

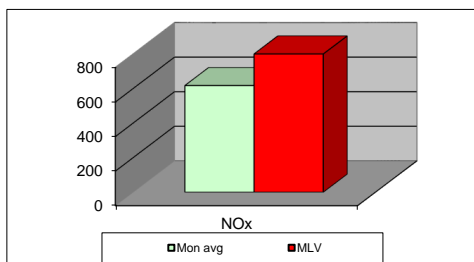
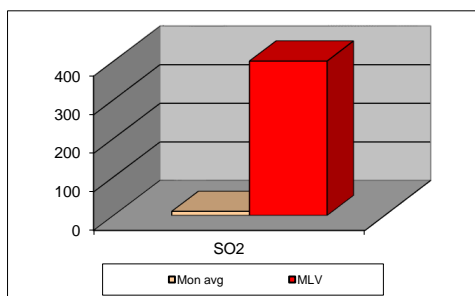
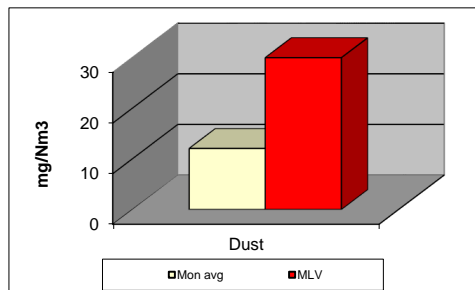
**MLV: Maximum Limit Value**

Explanations: The monthly average values are calculated on the half hour emissin values. Measured values of the concentrations are calculated at 10 vol. of O2

Results of the measurments are represented in Nm3 (Nm3 - T=273K, P=101,3kP, dry gas)

**Note: Due to service activities, Kiln 3 is not in operation on 06-07.06.2022.**

## MONTHLY REPORT FROM EMISSION MONITORING IN TITAN CEMENTARNICA USJE - KILN No.4



jun.22	Dust (mg/Nm <sup>3</sup> ) МДК 30mg/m <sup>3</sup>	МДК 30mg/m <sup>3</sup>	SO <sub>2</sub> (mg/Nm <sup>3</sup> ) МДК 400mg/m <sup>3</sup>	МДК 400mg/m <sup>3</sup>	NOx (mg/Nm <sup>3</sup> ) МДК 800mg/m <sup>3</sup>	МДК 800mg/m <sup>3</sup>	Comments
01.06.2022	10,86	30	9,27	400	636,04	800	
02.06.2022	10,64	30	8,87	400	568,95	800	
03.06.2022	17,1	30	5,11	400	591,96	800	
04.06.2022	14,82	30	7,05	400	582,8	800	
05.06.2022	12,12	30	9,88	400	604,39	800	
06.06.2022	13,82	30	9,03	400	582,89	800	
07.06.2022	12,57	30	9,07	400	568,95	800	
08.06.2022	11,68	30	8,97	400	547,85	800	
09.06.2022	12,57	30	9,82	400	689,86	800	
10.06.2022	12,67	30	8,23	400	687,47	800	
11.06.2022	12,09	30	8,3	400	710,36	800	
12.06.2022	14,57	30	8,46	400	696,1	800	
13.06.2022	14,28	30	8,87	400	663,05	800	
14.06.2022	13,87	30	7,81	400	687,45	800	
15.06.2022	13,02	30	7,75	400	724,22	800	
16.06.2022	10,81	30	7,86	400	696,05	800	
17.06.2022	11,73	30	20,82	400	606,81	800	
18.06.2022	13,22	30	7,85	400	602,67	800	
19.06.2022	12,55	30	8,18	400	624,86	800	
20.06.2022	11,47	30	7,78	400	768,4	800	
21.06.2022	11,04	30	10,04	400	611,67	800	
22.06.2022	11,33	30	9,38	400	679,33	800	
23.06.2022	11,15	30	8,75	400	606,36	800	
24.06.2022	10,88	30	11,86	400	615,2	800	
25.06.2022	9,6	30	10,14	400	584,59	800	
26.06.2022	9,49	30	9,69	400	531,44	800	
27.06.2022	9,05	30	12,89	400	574,93	800	
28.06.2022	9,32	30	27,18	400	544,26	800	
29.06.2022	10,6	30	23,79	400	556,27	800	
30.06.2022	12,51	30	9,82	400	696,69	800	
<b>Average</b>	<b>12,1</b>	<b>30</b>	<b>10,6</b>	<b>400</b>	<b>617,0</b>	<b>800</b>	

**MLV: Maximum Limit Value**

Explanations: The monthly average values are calculated on the half hour emissin values. Measured values of the concentrations are calculated at 10 vol. of O2  
Results of the measurments are represented in Nm3 (Nm3 - T=273K, P=101,3kP, dry gas)

**Note:**