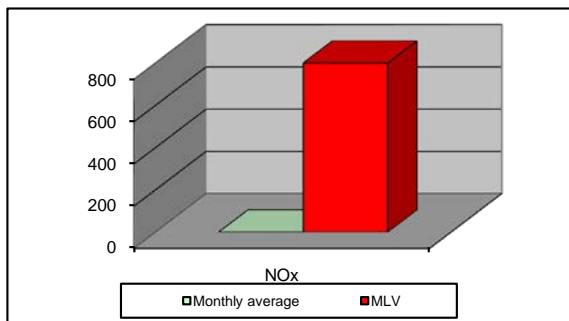
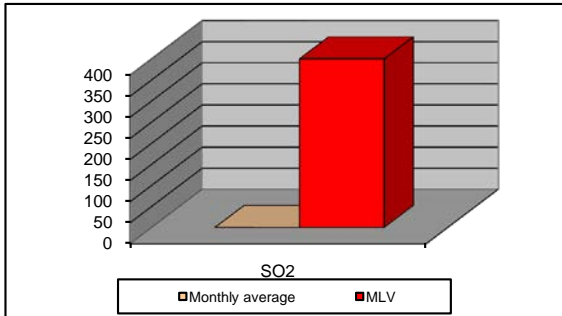
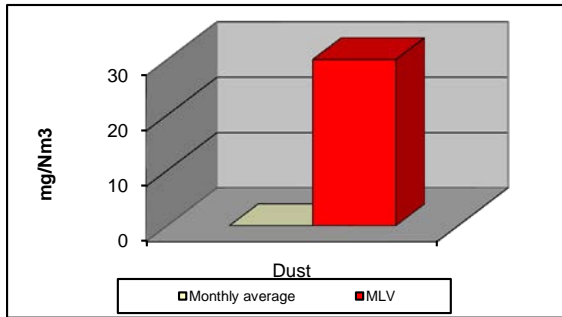


### MONTHLY REPORT FROM EMISSION MONITORING IN TITAN CEMENTARNICA USJE - KILN No.3



January 2015	Dust (mg/Nm <sup>3</sup> ) МДК 30mg/m <sup>3</sup>	МДК 30mg/m <sup>3</sup>	SO <sub>2</sub> (mg/Nm <sup>3</sup> ) МДК 400mg/m <sup>3</sup>	МДК 400mg/m <sup>3</sup>	NOx (mg/Nm <sup>3</sup> ) МДК 800mg/m <sup>3</sup>	МДК 800mg/m <sup>3</sup>	Comments
		30		400		800	
		30		400		800	
		30		400		800	
		30		400		800	
		30		400		800	
		30		400		800	
		30		400		800	
		30		400		800	
		30		400		800	
		30		400		800	
		30		400		800	
		30		400		800	
		30		400		800	
		30		400		800	
		30		400		800	
		30		400		800	
		30		400		800	
		30		400		800	
		30		400		800	
		30		400		800	
		30		400		800	
		30		400		800	
		30		400		800	
		30		400		800	
		30		400		800	
		30		400		800	
		30		400		800	
		30		400		800	
		30		400		800	
		30		400		800	
		30		400		800	
<b>Average</b>		<b>30</b>		<b>400</b>		<b>800</b>	

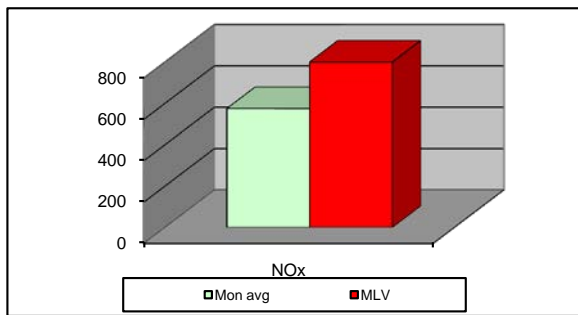
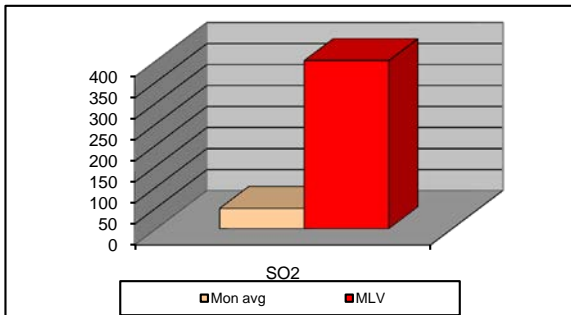
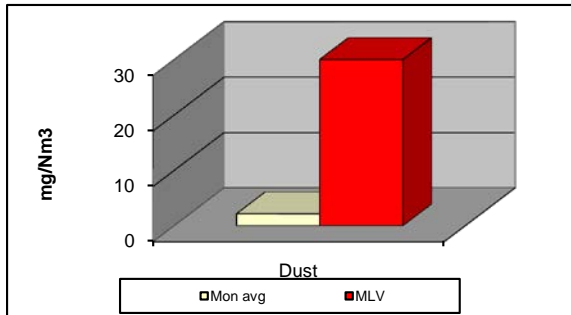
**MLV: Maximum Limit Value**

Explanations: The monthly average values are calculated on the half hour emissin values. Measured values of the concentrations are calculated at 10 vol. of O<sub>2</sub>

Results of the measurmets are represented in Nm3 (Nm3 - T=273K, P=101,3kP, dry gas)c

**Note: Kiln no.3 was not In operation during January 2015**

## MONTHLY REPORT FROM EMISSION MONITORING IN TITAN CEMENTARNICA USJE - KILN No.4



January 2015	Dust (mg/Nm <sup>3</sup> ) МДК 30mg/m <sup>3</sup>	МДК 30mg/m <sup>3</sup>	SO <sub>2</sub> (mg/Nm <sup>3</sup> ) МДК 400mg/m <sup>3</sup>	МДК 400mg/m <sup>3</sup>	NOx (mg/Nm <sup>3</sup> ) МДК 800mg/m <sup>3</sup>	МДК 800mg/m <sup>3</sup>	Comments
01.01.2015	2,68	30	17,22	400	667,11	800	
02.01.2015	2,69	30	31,34	400	500,18	800	
03.01.2015	2,19	30	31,11	400	624,41	800	
04.01.2015	1,69	30	23,1	400	470,38	800	
05.01.2015	1,92	30	23,21	400	529,48	800	
06.01.2015	2,09	30	26,26	400	485,38	800	
07.01.2015	2,06	30	121,44	400	555,92	800	
08.01.2015	2,34	30	96,21	400	723,56	800	
09.01.2015	1,97	30	50,68	400	632,65	800	
10.01.2015	1,93	30	61,28	400	559,87	800	
11.01.2015		30		400		800	
12.01.2015		30		400		800	
13.01.2015		30		400		800	
14.01.2015		30		400		800	
15.01.2015		30		400		800	
16.01.2015		30		400		800	
17.01.2015		30		400		800	
18.01.2015		30		400		800	
19.01.2015		30		400		800	
20.01.2015		30		400		800	
21.01.2015		30		400		800	
22.01.2015		30		400		800	
23.01.2015		30		400		800	
24.01.2015		30		400		800	
25.01.2015		30		400		800	
26.01.2015		30		400		800	
27.01.2015		30		400		800	
28.01.2015		30		400		800	
29.01.2015		30		400		800	
30.01.2015		30		400		800	
31.01.2015		30		400		800	
<b>Average</b>	<b>2,16</b>	<b>30</b>	<b>48,18</b>	<b>400</b>	<b>574,89</b>	<b>800</b>	

**MLV: Maximum Limit Value**

Note: Due to general overhaul, kiln no.4 is shut down on 10th Januar, 2015

Explanations: The monthly average values are calculated on the half hour emissin values. Measured values of the concentrations are calculated at 10 vol. of O2  
Results of the measurments are represented in Nm3 (Nm3 - T=273K, P=101,3kP, dry gas)c

**Note: Kiln no.4 was not In operation from 11.01.2015 - 31.01.2015**