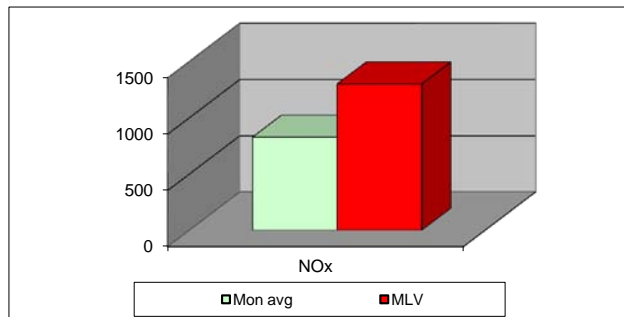
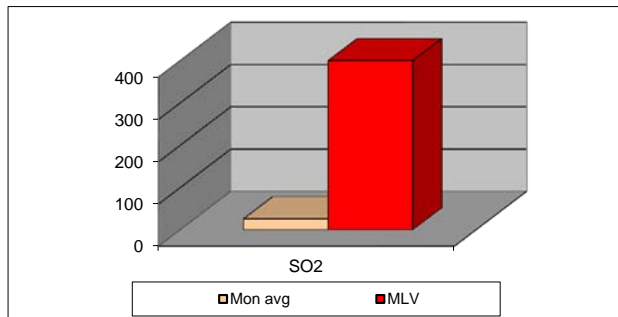
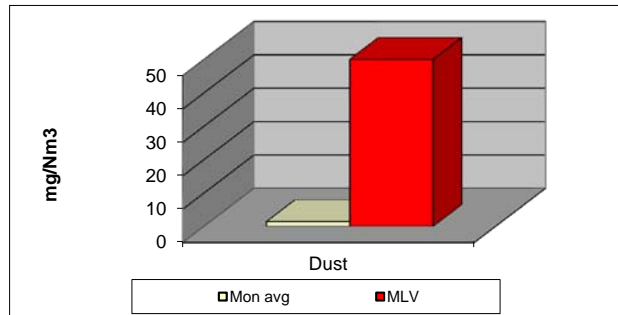


## MONTHLY REPORT FROM EMISSION MONITORING IN TITAN CEMENTARNICA USJE - KILN No.3

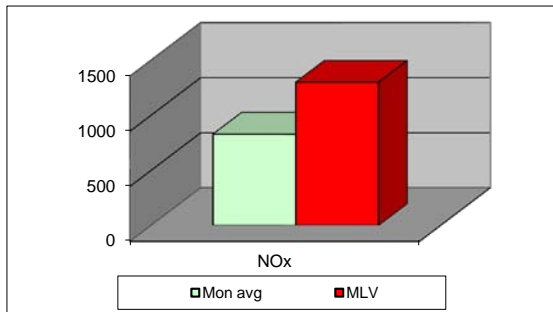
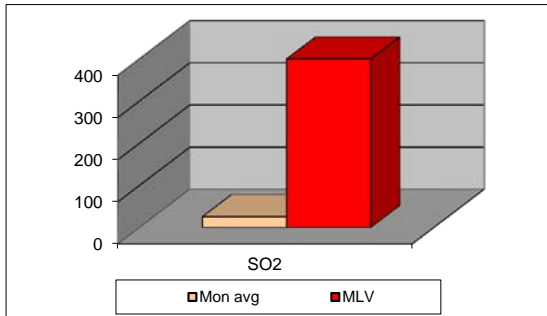
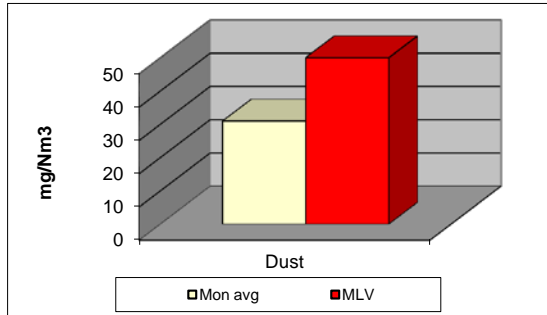


September 2012	Dust (mg/Nm <sup>3</sup> )	МДК 50mg/m <sup>3</sup>	SO <sub>2</sub>	МДК 400mg/m <sup>3</sup>	NOx	МДК 1300mg/m <sup>3</sup>	Comments
	МДК 50mg/m <sup>3</sup>		(mg/Nm <sup>3</sup> )		(mg/Nm <sup>3</sup> )		
01.09.2012	1,3	50	25,46	400	999,22	1300	
02.09.2012	1,31	50	27,42	400	1082,99	1300	
03.09.2012	1,77	50	51,44	400	967,5	1300	
04.09.2012	1,5	50	20,11	400	846,01	1300	
05.09.2012	1,37	50	10,99	400	979,54	1300	
06.09.2012	1,09	50	15,93	400	963,07	1300	
07.09.2012	1,25	50	33,24	400	802,62	1300	
08.09.2012	1,33	50	19,94	400	922,54	1300	
09.09.2012	1,62	50	21,31	400	1106,3	1300	
10.09.2012	1,96	50	32,64	400	944,12	1300	
11.09.2012	1,29	50	24,5	400	1006,85	1300	
12.09.2012	1,33	50	18,28	400	929,73	1300	
13.09.2012	1,18	50	17,57	400	892,76	1300	
14.09.2012	1,52	50	15,29	400	947,69	1300	
15.09.2012	1,58	50	17,28	400	927,86	1300	
16.09.2012	1,6	50	18,73	400	660,43	1300	
17.09.2012	1,39	50	19,72	400	523,93	1300	
18.09.2012	1,43	50	58,13	400	772,62	1300	
19.09.2012	1,35	50	23,87	400	860,51	1300	
20.09.2012	1,53	50	29,07	400	909,76	1300	
21.09.2012	1,72	50	111,34	400	630,61	1300	
22.09.2012	1,66	50	17,11	400	609,65	1300	
23.09.2012	1,65	50	18,14	400	591,12	1300	
24.09.2012	1,39	50	30,06	400	784,68	1300	
25.09.2012	1,67	50	19,35	400	693,03	1300	
26.09.2012	1,17	50	18,91	400	808,84	1300	
27.09.2012	1,22	50	18,58	400	866,91	1300	
28.09.2012	1,06	50	17,09	400	641,18	1300	
29.09.2012	1,12	50	25,18	400	827,51	1300	
30.09.2012	1,46	50	26,67	400	920,68	1300	
<b>Average</b>	<b>1,42</b>	<b>50</b>	<b>25,89</b>	<b>400</b>	<b>828,54</b>	<b>1300</b>	

**MLV: Maximum Limit Value**

Eplanations: The monthly average values are calculated on the half hour emissin values. Measured values of the concentrations are calculated at 10 vol. of O<sub>2</sub>  
 Results of the measurments are represented in Nm3 (Nm3 - T=273K, P=101,3kP, dry gas)c

## MONTHLY REPORT FROM EMISSION MONITORING IN TITAN CEMENTARNICA USJE - KILN No.4



September 2012	Dust		SO <sub>2</sub>		NOx		Comments
	(mg/Nm <sup>3</sup> ) МДК 50mg/m <sup>3</sup>	МДК 50mg/m <sup>3</sup>	(mg/Nm <sup>3</sup> ) МДК 400mg/m <sup>3</sup>	МДК 400mg/m <sup>3</sup>	(mg/Nm <sup>3</sup> ) МДК 1300mg/m <sup>3</sup>	МДК 1300mg/m <sup>3</sup>	
01.09.2012	18,71	50	12,73	400	1059,93	1300	
02.09.2012	19,8	50	13,4	400	1083,14	1300	
03.09.2012	18,72	50	3,48	400	1176,66	1300	
04.09.2012	19,19	50	4,4	400	1100,75	1300	
05.09.2012	20,12	50	2,88	400	1034,54	1300	
06.09.2012	17,48	50	8,58	400	861,22	1300	
07.09.2012	24,39	50	97,34	400	672,66	1300	
08.09.2012	26,1	50	62,51	400	774,27	1300	
09.09.2012	28,81	50	27,24	400	761,45	1300	
10.09.2012	34,53	50	98,97	400	536,16	1300	
11.09.2012	33,23	50	68,68	400	629,61	1300	
12.09.2012	33,45	50	3,7	400	903,18	1300	
13.09.2012	30,34	50	70,62	400	669,04	1300	
14.09.2012	30,64	50	88,6	400	572,47	1300	
15.09.2012	30,86	50	8,28	400	836,58	1300	
16.09.2012	31,21	50	36,6	400	863,68	1300	
17.09.2012	29,55	50	36,99	400	838,88	1300	
18.09.2012	38,17	50	7,2	400	1035,9	1300	
19.09.2012	38,17	50	8,89	400	920,88	1300	
20.09.2012	38,02	50	6,28	400	842,01	1300	
21.09.2012	33,72	50	11,92	400	697,83	1300	
22.09.2012	34,54	50	3,19	400	715,27	1300	
23.09.2012	39,84	50	12,41	400	663,91	1300	
24.09.2012	39,4	50	54,35	400	445,51	1300	
25.09.2012	28,82	50	3,42	400	482,88	1300	
26.09.2012	35,35	50	6,26	400	944,33	1300	
27.09.2012	35,81	50	3,38	400	784,88	1300	
28.09.2012	37,54	50	2,92	400	879,24	1300	
29.09.2012	44,65	50	3,44	400	922,55	1300	
30.09.2012	37,82	50	3,1	400	1151,52	1300	
Average	<b>30,97</b>	<b>50</b>	<b>25,73</b>	<b>400</b>	<b>828,70</b>	<b>1300</b>	

### MLV: Maximum Limit Value

Eplanations: The monthly average values are calculated on the half hour emissin values. Measured values of the concentrations are calculated at 10 vol. of O<sub>2</sub>  
 Results of the measurments are represented in Nm3 (Nm3 - T=273K, P=101,3kP, dry gas)c