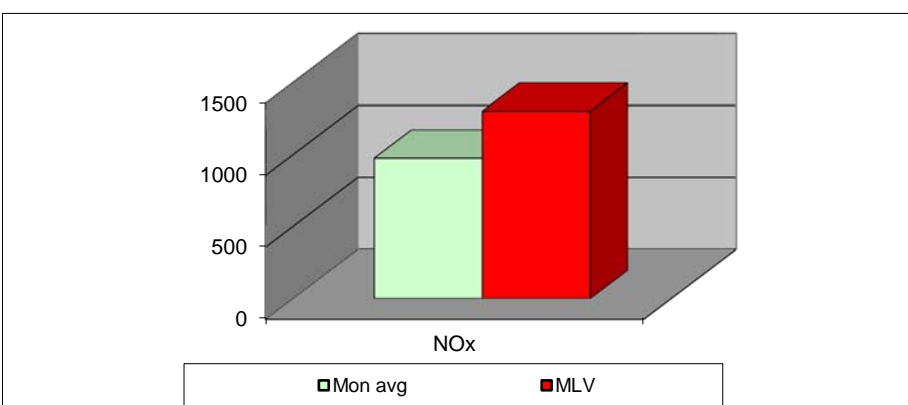
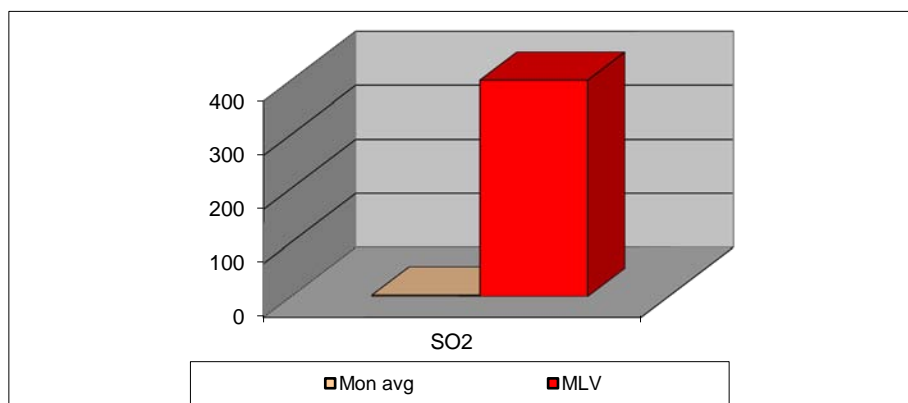
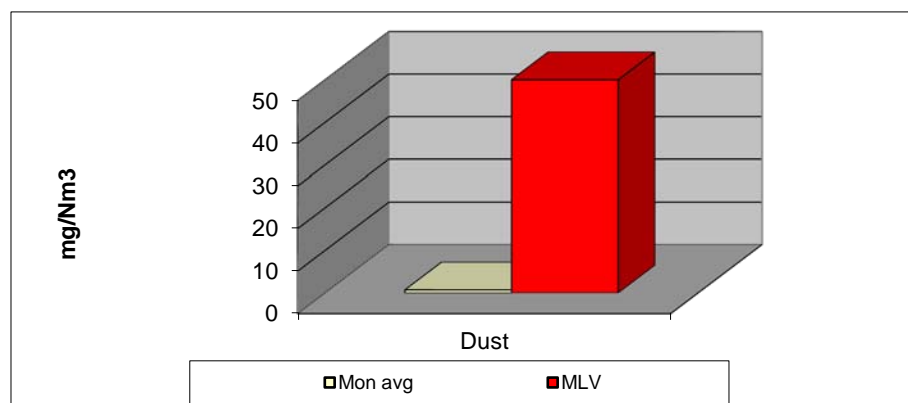


## MONTHLY REPORT FROM EMISSION MONITORING IN TITAN CEMENTARNICA USJE - KILN No.3



July 2012	Dust		SO <sub>2</sub>		NO <sub>x</sub>		Comments
	(mg/Nm <sup>3</sup> ) МДК 50mg/m <sup>3</sup>	МДК 50mg/m <sup>3</sup>	(mg/Nm <sup>3</sup> ) МДК 400mg/m <sup>3</sup>	МДК 400mg/m <sup>3</sup>	(mg/Nm <sup>3</sup> ) МДК 1300mg/m <sup>3</sup>	МДК 1300mg/m <sup>3</sup>	
1		50		400		1300	
2		50		400		1300	
3		50		400		1300	
4		50		400		1300	
5	0,63	50	31,88	400	1146,41	1300	
6	0,47	50	9,49	400	1050,8	1300	
7	0,29	50	0,43	400	941,07	1300	
8	0,41	50	0,95	400	892,32	1300	
9	0,49	50	1,59	400	750,77	1300	
10	0,55	50	4,92	400	882,56	1300	
11	0,69	50	2,02	400	954,02	1300	
12	0,43	50	0,31	400	875,01	1300	
13	0,47	50	0,15	400	934,73	1300	
14	0,81	50	0,14	400	973,51	1300	
15	0,64	50	0,16	400	889,32	1300	
16	0,5	50	0,33	400	959,81	1300	
17	0,76	50	0,19	400	1010,13	1300	
18	0,78	50	0,19	400	913,46	1300	
19	1,02	50	0,38	400	1073,25	1300	
20	0,63	50	0,31	400	1063,14	1300	
21	0,7	50	0,16	400	1043,19	1300	
22	0,69	50	0,16	400	1065,02	1300	
23	0,84	50	0,18	400	1002,17	1300	
24	1,03	50	0,19	400	1035,4	1300	
25	1,05	50	0,19	400	1025,81	1300	
26	0,67	50	0,19	400	923,75	1300	
27	0,81	50	0,43	400	1040,27	1300	
28	0,64	50	4,5	400	945,87	1300	
29	0,78	50	4,95	400	1028,07	1300	
30	1,03	50	5,39	400	943,09	1300	
31	1,17	50	0,67	400	942,04	1300	
<b>Average</b>	<b>1</b>	<b>50</b>	<b>3</b>	<b>400</b>	<b>974</b>	<b>1300</b>	

**MLV: Maximum Limit Value**

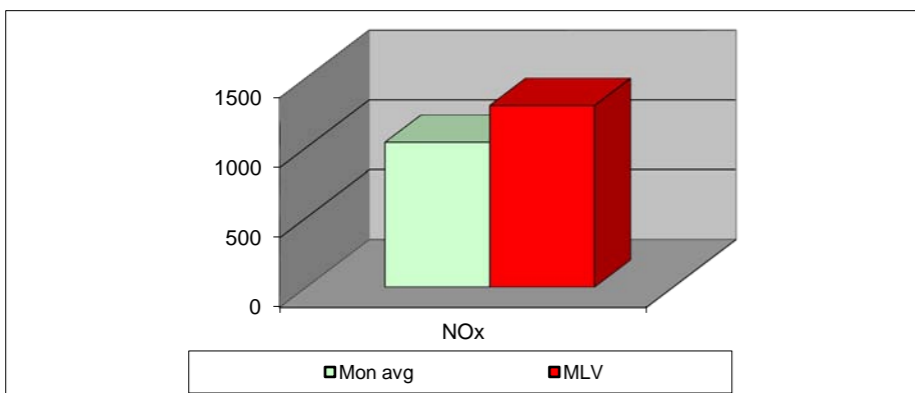
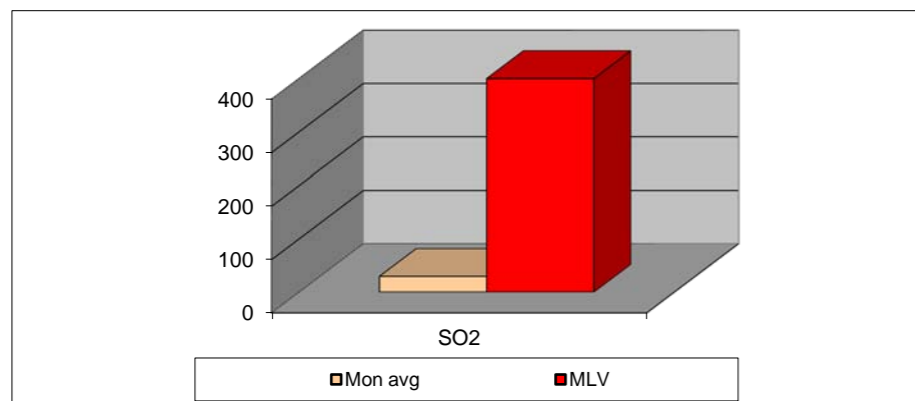
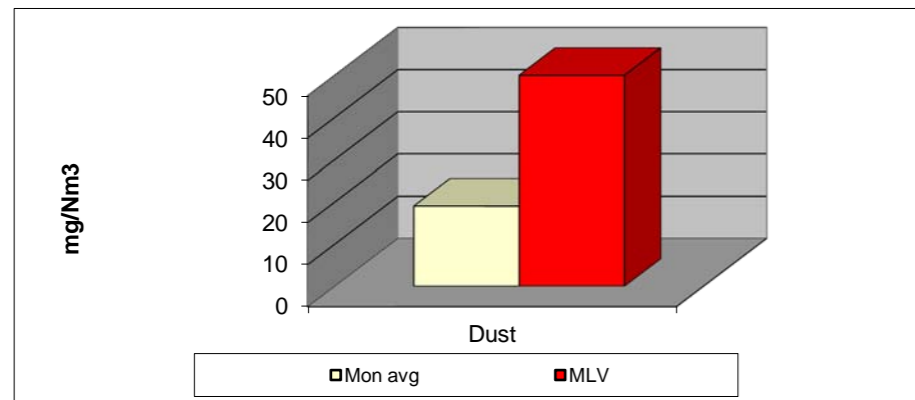
**Забелешка:** Погонот Подготовка-Печка 3, не е во работа во периодот од 26.06.2012 до 05.07.2012 год..

**Note:** Kiln no. 3 is not in operation from 26.06.2012 to 05.07.2012

Eplanations: The monthly average values are calculated on the half hour emissin values. Measured values of the concentrations are calculated at 10 vol. of O<sub>2</sub>

Results of the measurments are represented in Nm3 (Nm3 - T=273K, P=101,3kP, dry gas)c

**MONTHLY REPORT FROM EMISSION MONITORING IN TITAN CEMENTARNICA USJE - KILN No.4**



July 2012	Dust	МДК 50mg/m <sup>3</sup>	SO <sub>2</sub>	МДК 400mg/m <sup>3</sup>	NOx	МДК 1300mg/m <sup>3</sup>	Comments
	(mg/Nm <sup>3</sup> )		(mg/Nm <sup>3</sup> )		(mg/Nm <sup>3</sup> )		
1	38,4	50	27,08	400	1149,63	1300	
2	49,7	50	28,08	400	1162,89	1300	
3		50		400		1300	
4		50		400		1300	
5		50		400		1300	
6		50		400		1300	
7		50		400		1300	
8		50		400		1300	
9		50		400		1300	
10		50		400		1300	
11	16,08	50	15,85	400	1047,51	1300	
12	13,27	50	28,97	400	964,81	1300	
13	13,31	50	27,47	400	949,91	1300	
14	17,41	50	25,31	400	986,8	1300	
15	16,46	50	26,83	400	1036,36	1300	
16	14,47	50	27,6	400	982,71	1300	
17	12,46	50	28,1	400	1019,76	1300	
18	25,72	50	22,92	400	1052,52	1300	
19	16,1	50	53,89	400	929,05	1300	
20	14,49	50	44,38	400	1100,6	1300	
21	17,48	50	22,25	400	1113,9	1300	
22	17,97	50	20,54	400	1065,8	1300	
23	14,9	50	22,51	400	1073,29	1300	
24	14,07	50	33,33	400	1056,84	1300	
25	16,81	50	22,82	400	1117,18	1300	
26	16,87	50	23,04	400	1038,69	1300	
27	15,77	50	26,31	400	1009,26	1300	
28	17,42	50	43,01	400	964,36	1300	
29	18,98	50	37,1	400	973,13	1300	
30	18,17	50	37,06	400	952,85	1300	
31	21,35	50	34,25	400	1071,34	1300	
Average	19	50	30	400	1036	1300	

**MLV: Maximum Limit Value**

Забелешка: Погонот Подготовка-Печка 4, не е во работа во периодот од 03.07.2012 до 11.07.2012 год.

**Note:** Kiln no. 4 is not in operation from 03.07.2012 to 11.07.2012

Eplanations: The monthly average values are calculated on the half hour emissin values. Measured values of the concentrations are calculated at 10 vol. of O<sub>2</sub>  
 Results of the measurments are represented in Nm3 (Nm3 - T=273K, P=101,3kP, dry gas)c