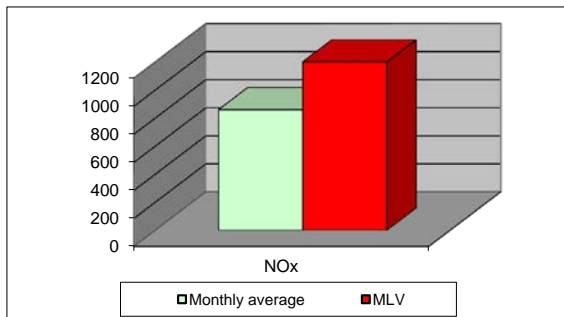
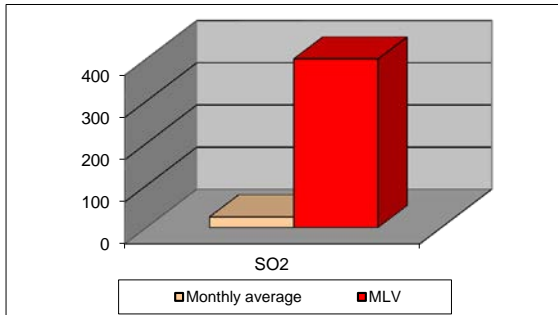
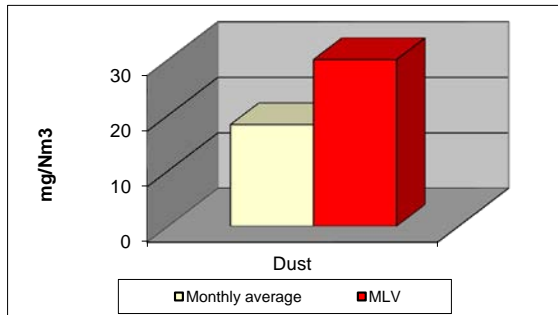


## MONTHLY REPORT FROM EMISSION MONITORING IN TITAN CEMENTARNICA USJE - KILN No.3

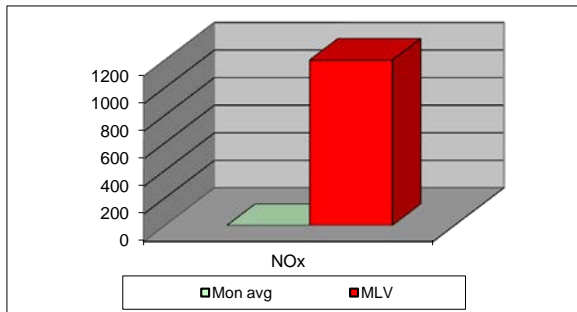
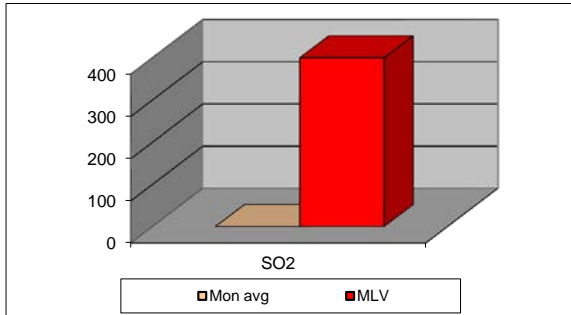
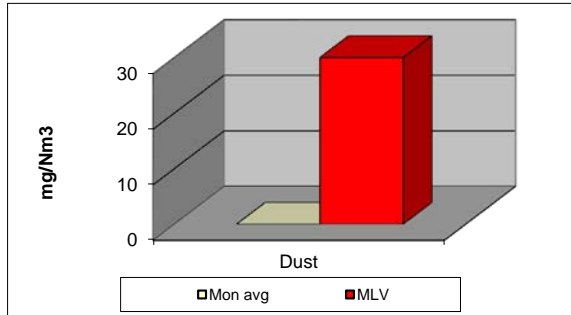


January 2014	Dust (mg/Nm <sup>3</sup> ) МДК 30mg/m <sup>3</sup>	МДК 30mg/m <sup>3</sup>	SO <sub>2</sub> (mg/Nm <sup>3</sup> ) МДК 400mg/m <sup>3</sup>	МДК 400mg/m <sup>3</sup>	NO <sub>x</sub> (mg/Nm <sup>3</sup> ) МДК 1200mg/m <sup>3</sup>	МДК 1200mg/m <sup>3</sup>	Comments
01.01.2014	14,41	30	16,28	400	861,17	1200	
02.01.2014	14,63	30	23,85	400	749,14	1200	
03.01.2014	13,63	30	19,17	400	836,53	1200	
04.01.2014	14,48	30	28,17	400	749,64	1200	
05.01.2014	16,61	30	25,65	400	878,69	1200	
06.01.2014	18,08	30	39,58	400	757,14	1200	
07.01.2014	16,49	30	12,85	400	937,1	1200	
08.01.2014	17,11	30	14,18	400	934,08	1200	
09.01.2014	18,65	30	19,97	400	963,55	1200	
10.01.2014	18,27	30	16,97	400	707,9	1200	
11.01.2014	16,92	30	14,89	400	906,42	1200	
12.01.2014	17,81	30	17,33	400	837,86	1200	
13.01.2014	16,94	30	15,41	400	819,18	1200	
14.01.2014	16,28	30	12,59	400	869,59	1200	
15.01.2014	16,06	30	15,61	400	913,1	1200	
16.01.2014	18,61	30	35,21	400	951,86	1200	
17.01.2014	18,08	30	19,44	400	924,74	1200	
18.01.2014	17,7	30	20,01	400	892,5	1200	
19.01.2014	20,15	30	22,13	400	1016,7	1200	
20.01.2014	18,3	30	37,27	400	946,78	1200	
21.01.2014	21,06	30	84,27	400	922,34	1200	
22.01.2014	20,16	30	51,47	400	867,52	1200	
23.01.2014	19,92	30	45,57	400	854,38	1200	
24.01.2014	19,28	30	20,27	400	781,17	1200	
25.01.2014	19,05	30	18,17	400	744,38	1200	
26.01.2014	20,76	30	31,19	400	861,06	1200	
27.01.2014	22,49	30	51,04	400	826,71	1200	
28.01.2014	21,49	30	9,77	400	806,68	1200	
29.01.2014	21,36	30	8,02	400	815,05	1200	
30.01.2014	22,14	30	23,04	400	794,74	1200	
31.01.2014	19,96	30	10,33	400	900,63	1200	
<b>Average</b>	<b>18,3</b>	<b>30</b>	<b>25,2</b>	<b>400</b>	<b>859,0</b>	<b>1200</b>	

**MLV: Maximum Limit Value**

Eplanations: The monthly average values are calculated on the half hour emissin values. Measured values of the concentrations are calculated at 10 vol. of O<sub>2</sub>  
 Results of the measurments are represented in Nm3 (Nm3 - T=273K, P=101,3kP, dry gas)c

**MONTHLY REPORT FROM EMISSION MONITORING IN TITAN CEMENTARNICA USJE - KILN No.4**



January 2014	Dust (mg/Nm <sup>3</sup> ) МДК 30mg/m <sup>3</sup>		SO <sub>2</sub> (mg/Nm <sup>3</sup> ) МДК 400mg/m <sup>3</sup>		NO <sub>x</sub> (mg/Nm <sup>3</sup> ) МДК 1200mg/m <sup>3</sup>		Comments
		30		400		1200	
		30		400		1200	
		30		400		1200	
		30		400		1200	
		30		400		1200	
		30		400		1200	
		30		400		1200	
		30		400		1200	
		30		400		1200	
		30		400		1200	
		30		400		1200	
		30		400		1200	
		30		400		1200	
		30		400		1200	
		30		400		1200	
		30		400		1200	
		30		400		1200	
		30		400		1200	
		30		400		1200	
		30		400		1200	
		30		400		1200	
		30		400		1200	
		30		400		1200	
		30		400		1200	
		30		400		1200	
		30		400		1200	
		30		400		1200	
		30		400		1200	
		30		400		1200	
		30		400		1200	
		30		400		1200	
		30		400		1200	
		30		400		1200	
<b>Average</b>		<b>30</b>		<b>400</b>		<b>1200</b>	

**MLV: Maximum Limit Value**

Eplanations: The monthly average values are calculated on the half hour emissin values. Measured values of the concentrations are calculated at 10 vol. of O<sub>2</sub>  
 Results of the measurments are represented in Nm3 (Nm3 - T=273K, P=101,3kP, dry gas)c