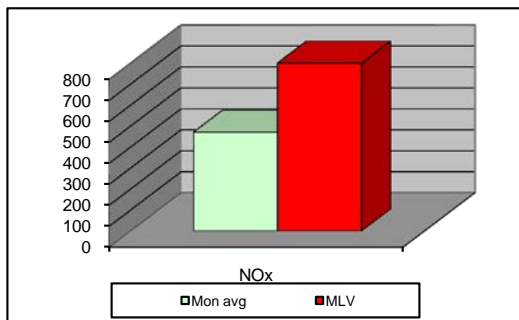
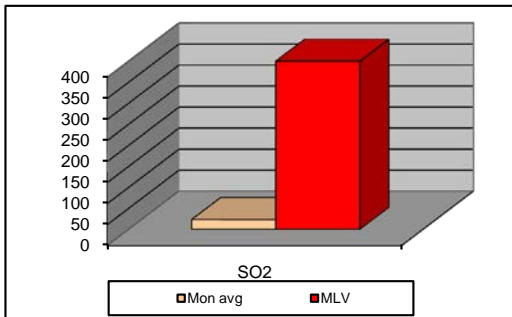
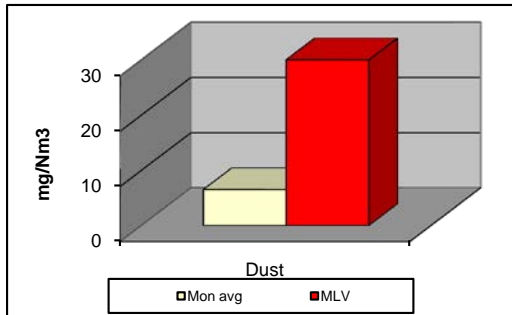


MONTHLY REPORT FROM EMISSION MONITORING IN TITAN CEMENTARNICA USJE - KILN No.3



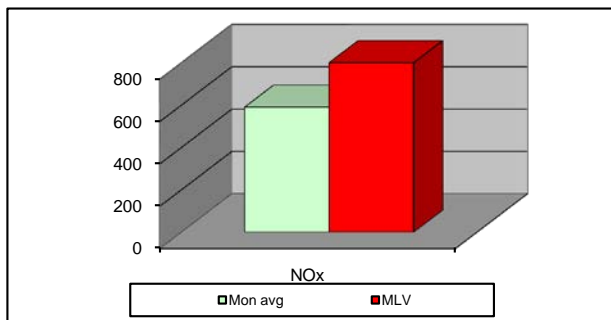
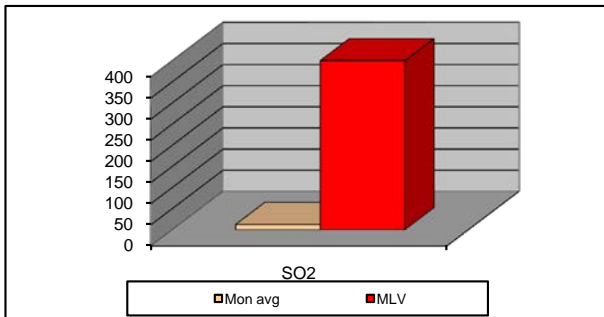
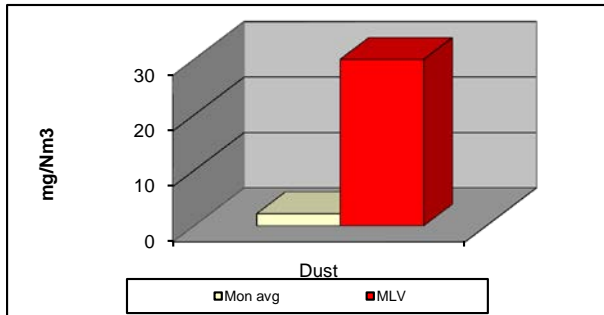
August 2015	Dust (mg/Nm ³) МДК 30mg/m ³	МДК 30mg/m ³	SO ₂ (mg/Nm ³) МДК 400mg/m ³	МДК 400mg/m ³	NO _x (mg/Nm ³) МДК 800mg/m ³	МДК 800mg/m ³	Comments
01.08.2015		30		400		800	
02.08.2015		30		400		800	
03.08.2015		30		400		800	
04.08.2015		30		400		800	
05.08.2015		30		400		800	
06.08.2015		30		400		800	
07.08.2015		30		400		800	
08.08.2015		30		400		800	
09.08.2015		30		400		800	
10.08.2015		30		400		800	
11.08.2015		30		400		800	
12.08.2015		30		400		800	
13.08.2015		30		400		800	
14.08.2015		30		400		800	
15.08.2015		30		400		800	
16.08.2015		30		400		800	
17.08.2015		30		400		800	
18.08.2015		30		400		800	
19.08.2015		30		400		800	
20.08.2015		30		400		800	
21.08.2015		30		400		800	
22.08.2015		30		400		800	
23.08.2015		30		400		800	
24.08.2015		30		400		800	
25.08.2015		30		400		800	
26.08.2015		30		400		800	
27.08.2015	4,86	30	26,93	400	646,07	800	
28.08.2015	12,09	30	29,82	400	236,15	800	
29.08.2015	10,1	30	16,03	400	209,08	800	
30.08.2015	5,66	30	11,74	400	463,77	800	
31.08.2015	6,33	30	16,75	400	462,3	800	
Average	6,5	30	23,1	400	470,5	800	

MLV: Maximum Limit Value

Explanations: The monthly average values are calculated on the half hour emissin values. Measured values of the concentrations are calculated at 10 vol. of O2
Results of the measurments are represented in Nm3 (Nm3 - T=273K, P=101,3kP, dry gas)c

Note: Kiln no.3 was not In operation from 01.08.2015 - 26.08.2015

MONTHLY REPORT FROM EMISSION MONITORING IN TITAN CEMENTARNICA USJE - KILN No.4



August 2015	Dust (mg/Nm ³) МДК 30mg/m ³	МДК 30mg/m ³	SO ₂ (mg/Nm ³) МДК 400mg/m ³	МДК 400mg/m ³	NOx (mg/Nm ³) МДК 800mg/m ³	МДК 800mg/m ³	Comments
01.08.2015	2,03	30	13,19	400	589,03	800	
02.08.2015	2,05	30	15,62	400	571,13	800	
03.08.2015	2,48	30	22,49	400	658,26	800	
04.08.2015	2,32	30	19,94	400	688,24	800	
05.08.2015	2,42	30	17,58	400	693,4	800	
06.08.2015	2,19	30	15	400	605,88	800	
07.08.2015	1,94	30	13,61	400	565,75	800	
08.08.2015	2	30	12,96	400	511,62	800	
09.08.2015	1,97	30	12,85	400	498,59	800	
10.08.2015	2,21	30	12,72	400	548,76	800	
11.08.2015	2,04	30	13,25	400	677,51	800	
12.08.2015	2,15	30	14,76	400	721,98	800	
13.08.2015	2,25	30	12,2	400	642,75	800	
14.08.2015	2,06	30	10,7	400	625,9	800	
15.08.2015	2,12	30	11,83	400	625,22	800	
16.08.2015	2,04	30	10,46	400	662,89	800	
17.08.2015	2,09	30	13,27	400	685,42	800	
18.08.2015	2,19	30	11,61	400	695,95	800	
19.08.2015	2,1	30	12,48	400	612,82	800	
20.08.2015	2,18	30	10,37	400	588,04	800	
21.08.2015	2,16	30	7,8	400	626,13	800	
22.08.2015	2,12	30	9,86	400	648,64	800	
23.08.2015	1,98	30	11,29	400	651,7	800	
24.08.2015	2,15	30	9,73	400	544,82	800	
25.08.2015	2,22	30	10,19	400	564,71	800	
26.08.2015	2,36	30	8,65	400	525,22	800	
27.08.2015	2,46	30	7,69	400	518,38	800	
28.08.2015	2,25	30	9,03	400	478,89	800	
29.08.2015	2,38	30	8,78	400	416,58	800	
30.08.2015	2,4	30	11,23	400	392,5	800	
31.08.2015	2,49	30	10,47	400	465,57	800	
Average	2,2	30	12,3	400	590,4	800	

MLV: Maximum Limit Value

Explanations: The monthly average values are calculated on the half hour emissin values. Measured values of the concentrations are calculated at 10 vol. of O2
Results of the measurments are represented in Nm3 (Nm3 - T=273K, P=101,3kP, dry gas)c