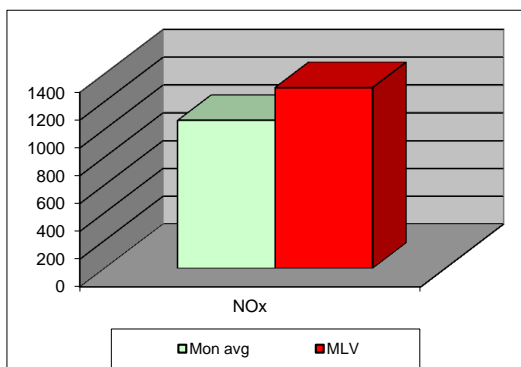
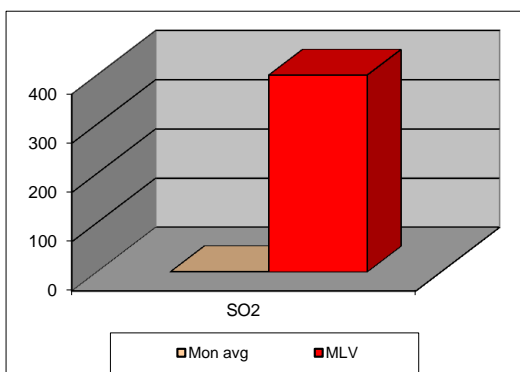
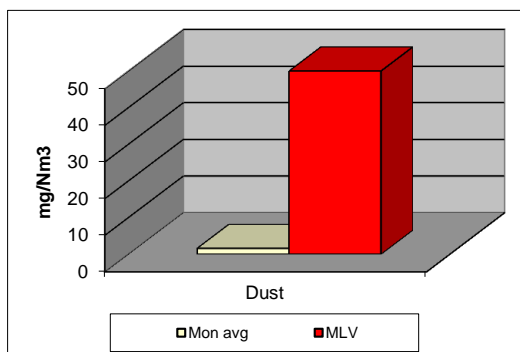


### MONTHLY REPORT FROM EMISSION MONITORING IN TITAN CEMENTARNICA USJE - KILN No.3

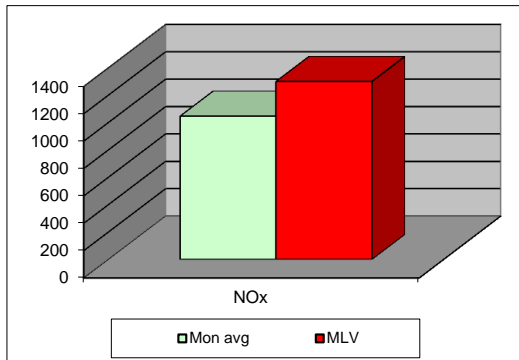
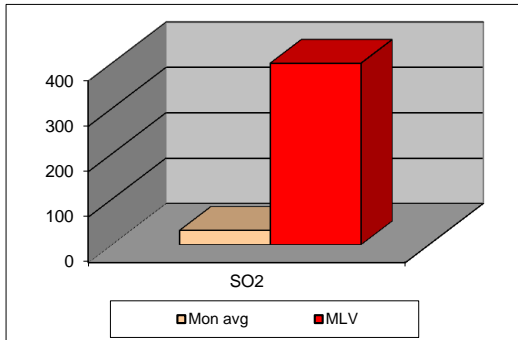
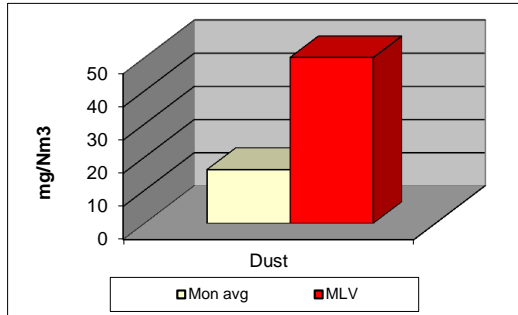


May 2012	Dust	МДК 50mg/m <sup>3</sup>	SO <sub>2</sub>	МДК 400mg/m <sup>3</sup>	NOx	МДК 1300mg/m <sup>3</sup>	Comments
	(mg/Nm <sup>3</sup> ) МДК 50mg/m <sup>3</sup>		(mg/Nm <sup>3</sup> ) МДК 400mg/m <sup>3</sup>		(mg/Nm <sup>3</sup> ) МДК 1300mg/m <sup>3</sup>		
1	1,45	50	1,03	400	1038,71	1300	
2	1,53	50	0,84	400	1114,64	1300	
3	1,46	50	0,91	400	1091,21	1300	
4	1,51	50	0,64	400	975,99	1300	
5	1,32	50	0,8	400	1044,15	1300	
6	1,41	50	0,73	400	1082,26	1300	
7	1,45	50	0,61	400	1077,97	1300	
8	/	50	/	400	/	1300	
9	1,38	50	0,31	400	1108,31	1300	
10	1,38	50	0,15	400	1123,5	1300	
11	1,18	50	0,34	400	1082,67	1300	
12	1,12	50	0,25	400	1059,48	1300	
13	1,32	50	0,33	400	1027,86	1300	
14	1,85	50	0,16	400	1083,42	1300	
15	2,21	50	0,26	400	1076,5	1300	
16	1,64	50	0,15	400	969,2	1300	
17	2,53	50	0,16	400	1227,69	1300	
18	2,32	50	0,17	400	1119,14	1300	
19	1,6	50	0,14	400	1097,56	1300	
20	1,58	50	0,16	400	956,38	1300	
21	1,61	50	0,96	400	1080,25	1300	
22	1,97	50	0,15	400	1075,59	1300	
23	/	50	/	400	/	1300	
24	/	50	/	400	/	1300	
25	1,41	50	0,14	400	1081,86	1300	
26	1,38	50	0,14	400	994,64	1300	
27	1,45	50	0,13	400	1036,18	1300	
28	1,54	50	0,15	400	1058,98	1300	
29	2,17	50	0,8	400	1093,4	1300	
30	1,47	50	0,25	400	979,47	1300	
31	1,57	50	0,29	400	1016,78	1300	
<b>Average</b>	<b>2</b>	50	<b>0,40</b>	400	<b>1063</b>	1300	

**Maximum Limit Value**

Explanations: The monthly average values are calculated on the half hour emission values. Measured values of the concentrations are calculated at 10 vol. of O<sub>2</sub>. Results of the measurements are represented in Nm<sup>3</sup> (Nm<sup>3</sup> - T=273K, P=101,3kP, dry gas)

## MONTHLY REPORT FROM EMISSION MONITORING IN TITAN CEMENTARNICA USJE - KILN No.4



May 2012	Dust (mg/Nm <sup>3</sup> )	МДК 50mg/m <sup>3</sup>	SO <sub>2</sub> (mg/Nm <sup>3</sup> )	МДК 400mg/m <sup>3</sup>	NOx (mg/Nm <sup>3</sup> )	МДК 1300mg/m <sup>3</sup>	Comments
	МДК 50mg/m <sup>3</sup>		МДК 400mg/m <sup>3</sup>		МДК 1300mg/m <sup>3</sup>		
1		50		400		1300	
2		50		400		1300	
3		50		400		1300	
4		50		400		1300	
5		50		400		1300	
6		50		400		1300	
7		50		400		1300	
8		50		400		1300	
9		50		400		1300	
10		50		400		1300	
11		50		400		1300	
12		50		400		1300	
13		50		400		1300	
14		50		400		1300	
15	7,33	50	148,74	400	787,4	1300	
16	10,12	50	43,57	400	987,78	1300	
17	15,87	50	28,85	400	1010,5	1300	
18	11,37	50	31,88	400	1016,22	1300	
19	15	50	21,11	400	1047,78	1300	
20	18,92	50	18,46	400	1084,41	1300	
21	18,2	50	22,54	400	1078,59	1300	
22	18,37	50	32,09	400	1039,54	1300	
23	/	50	/	400	/	1300	
24	/	50	/	400	/	1300	
25	18,56	50	20,92	400	1099,29	1300	
26	20,6	50	20,76	400	1190,24	1300	
27	20,59	50	18,65	400	1131,76	1300	
28	16,68	50	15,1	400	955,72	1300	
29	18,98	50	17,44	400	1145,72	1300	
30	16,86	50	17,07	400	1099,04	1300	
31	14,91	50	14,21	400	1020,03	1300	
<b>Average</b>	<b>16</b>	<b>50</b>	<b>31</b>	<b>400</b>	<b>1046</b>	<b>1300</b>	

### Maximum Limit Value

Explanations: The monthly average values are calculated on the half hour emission values. Measured values of the concentrations are calculated at 10 vol. of O<sub>2</sub>. Results of the measurements are represented in Nm<sup>3</sup> (Nm<sup>3</sup> - T=273K, P=101,3kP, dry gas)