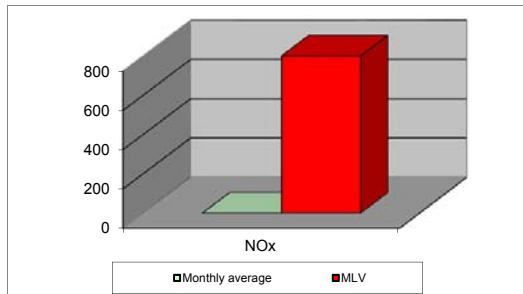
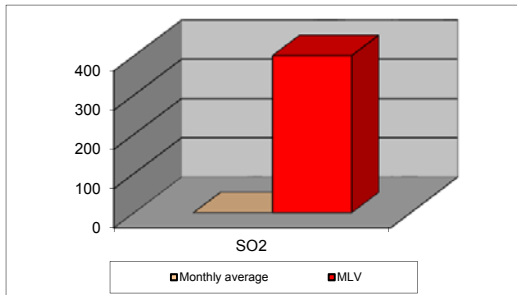
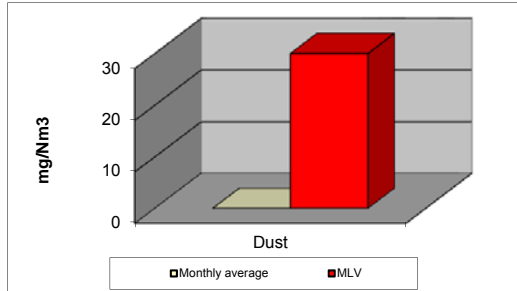


MONTHLY REPORT FROM EMISSION MONITORING IN TITAN CEMENTARNICA USJE - KILN No.3



jan.22	Dust (mg/Nm ³) МДК 30mg/m ³	МДК 30mg/m ³	SO ₂ (mg/Nm ³) МДК 400mg/m ³	МДК 400mg/m ³	NO _x (mg/Nm ³) МДК 800mg/m ³	МДК 800mg/m ³	Comments
01.01.2022		30		400		800	
02.01.2022		30		400		800	
03.01.2022		30		400		800	
04.01.2022		30		400		800	
05.01.2022		30		400		800	
06.01.2022		30		400		800	
07.01.2022		30		400		800	
08.01.2022		30		400		800	
09.01.2022		30		400		800	
10.01.2022		30		400		800	
11.01.2022		30		400		800	
12.01.2022		30		400		800	
13.01.2022		30		400		800	
14.01.2022		30		400		800	
15.01.2022		30		400		800	
16.01.2022		30		400		800	
17.01.2022		30		400		800	
18.01.2022		30		400		800	
19.01.2022		30		400		800	
20.01.2022		30		400		800	
21.01.2022		30		400		800	
22.01.2022		30		400		800	
23.01.2022		30		400		800	
24.01.2022		30		400		800	
25.01.2022		30		400		800	
26.01.2022		30		400		800	
27.01.2022		30		400		800	
28.01.2022		30		400		800	
29.01.2022		30		400		800	
30.01.2022		30		400		800	
31.01.2022		30		400		800	
Average		30		400		800	

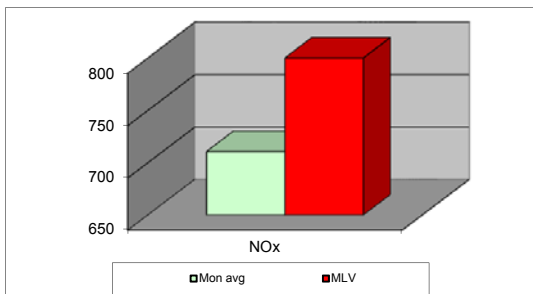
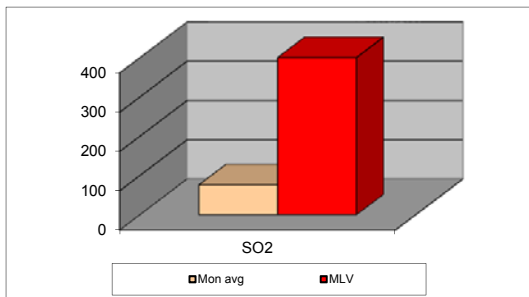
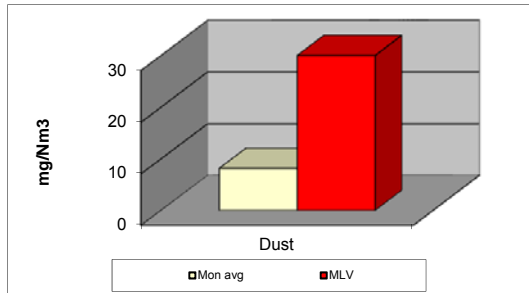
MLV: Maximum Limit Value

Explanations: The monthly average values are calculated on the half hour emissin values. Measured values of the concentrations are calculated at 10 vol. of O₂

Results of the measurments are represented in Nm3 (Nm3 - T=273K, P=101,3kP, dry gas)

Note: Due to annual maintenance, Kiln 3 is not in operation from 09.12.2021

MONTHLY REPORT FROM EMISSION MONITORING IN TITAN CEMENTARNICA USJE - KILN No.4



jan.22	Dust (mg/Nm ³) МДК 30mg/m ³	МДК 30mg/m ³	SO ₂ (mg/Nm ³) МДК 400mg/m ³	МДК 400mg/m ³	NOx (mg/Nm ³) МДК 800mg/m ³	МДК 800mg/m ³	Comments
01.01.2022	6,97	30	62,82	400	719,67	800	
02.01.2022	7,03	30	101,56	400	716,78	800	
03.01.2022	7,58	30	135,06	400	769,93	800	
04.01.2022	6,91	30	167,3	400	750,18	800	
05.01.2022	9,37	30	114,45	400	720,44	800	
06.01.2022	9,12	30	3,37	400	738,11	800	
07.01.2022	6,91	30	183,75	400	776,95	800	
08.01.2022	8,45	30	101,61	400	669,78	800	
09.01.2022	8,13	30	23,52	400	708,79	800	
10.01.2022	8,46	30	124,39	400	712,03	800	
11.01.2022	8,7	30	99,17	400	720,06	800	
12.01.2022	7,44	30	183,16	400	716,76	800	
13.01.2022	8,42	30	164,31	400	704,24	800	
14.01.2022	7,11	30	255,58	400	715,55	800	
15.01.2022	9,41	30	72,31	400	740,64	800	
16.01.2022	9,94	30	152,45	400	740,58	800	
17.01.2022	8,53	30	8,38	400	748,48	800	
18.01.2022	7,84	30	23,64	400	676,26	800	
19.01.2022	8,67	30	10,38	400	731,05	800	
20.01.2022	8,2	30	17,82	400	685,58	800	
21.01.2022	7,17	30	4,65	400	727,56	800	
22.01.2022	7,21	30	3,16	400	732,07	800	
23.01.2022	7,77	30	4,27	400	704,17	800	
24.01.2022	8,58	30	8,18	400	702,75	800	
25.01.2022	9,21	30	60,66	400	708,5	800	
26.01.2022	7,03	30	22,79	400	398	800	
27.01.2022	9,28	30	66,22	400	603,33	800	
28.01.2022	12,7	30	8,15	400	642,23	800	
29.01.2022		30		400		800	
30.01.2022		30		400		800	
31.01.2022		30		400		800	
Average	8,17	30	75,88	400	710,74	800	

MLV: Maximum Limit Value

Explanations: The monthly average values are calculated on the half hour emission values. Measured values of the concentrations are calculated at 10 vol. of O₂

Results of the measurements are represented in Nm³ (Nm³ - T=273K, P=101,3kP, dry gas)

Note: Due to annual maintenance, Kiln 4 is not in operation from 29.01.2022