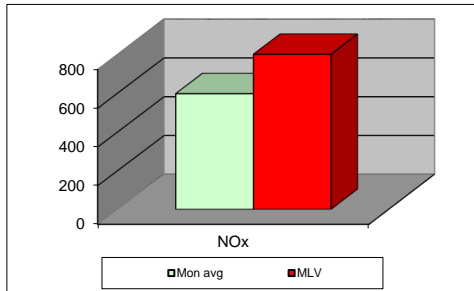
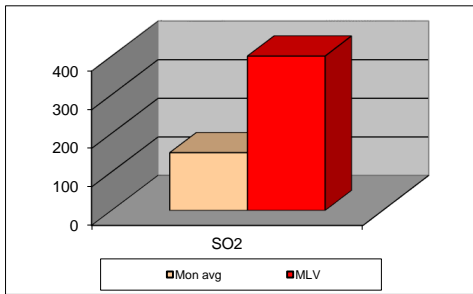
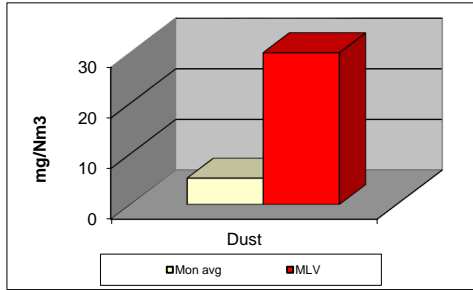


### MONTHLY REPORT FROM EMISSION MONITORING IN TITAN CEMENTARNICA USJE - KILN No.3



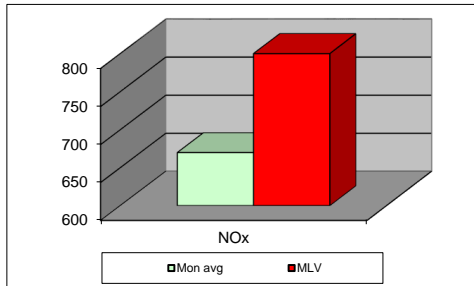
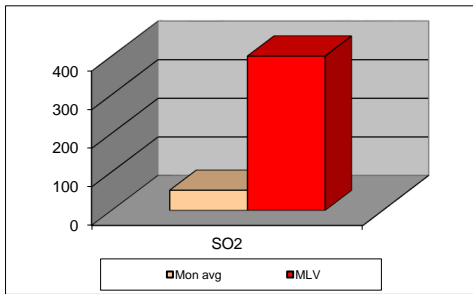
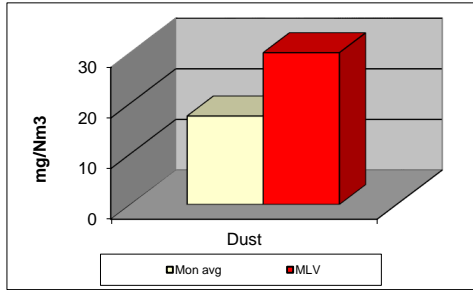
дек.22	Dust (mg/Nm <sup>3</sup> ) МДК 30mg/m <sup>3</sup>	МДК 30mg/m <sup>3</sup>	SO <sub>2</sub> (mg/Nm <sup>3</sup> ) МДК 400mg/m <sup>3</sup>	МДК 400mg/m <sup>3</sup>	NOx (mg/Nm <sup>3</sup> ) МДК 800mg/m <sup>3</sup>	МДК 800mg/m <sup>3</sup>	Comments
01.12.2022	3,16	30	91,11	400	596,08	800	
02.12.2022	3,27	30	119,59	400	564,68	800	
03.12.2022	3,34	30	131,6	400	509,73	800	
04.12.2022	3,11	30	230,3	400	525,65	800	
05.12.2022	3,12	30	191,58	400	644,41	800	
06.12.2022	3,02	30	136,14	400	552	800	
07.12.2022	3,05	30	98,48	400	452,43	800	
08.12.2022	3,05	30	117,26	400	550,3	800	
09.12.2022	3,02	30	156,78	400	389,8	800	
10.12.2022	3,27	30	195,44	400	440,99	800	
11.12.2022	3,5	30	150,17	400	656,83	800	
12.12.2022	3,51	30	167,68	400	640,17	800	
13.12.2022	4,13	30	191,04	400	630,69	800	
14.12.2022	13,04	30	181,48	400	682,09	800	
15.12.2022		30		400		800	
16.12.2022	3,76	30	133,03	400	560,13	800	
17.12.2022	4,53	30	178,76	400	516,76	800	
18.12.2022	6,29	30	170,7	400	580,15	800	
19.12.2022	8,67	30	112,44	400	665,57	800	
20.12.2022	6,86	30	213,71	400	625,56	800	
21.12.2022	1,89	30	205,73	400	682,93	800	
22.12.2022		30		400		800	
23.12.2022	0,4	30	115,18	400	674	800	
24.12.2022	0,91	30	81,95	400	624,3	800	
25.12.2022	2,21	30	61,26	400	604,02	800	
26.12.2022	4,59	30	66,5	400	703,68	800	
27.12.2022	9,52	30	66,72	400	717,67	800	
28.12.2022	6,3	30	130,74	400	660,6	800	
29.12.2022	10,56	30	144,94	400	606,06	800	
30.12.2022	11,08	30	179,45	400	707,12	800	
31.12.2022	16,95	30	251,8	400	655,76	800	
Average	5,2	30	150,0	400	597,5	800	

**MLV: Maximum Limit Value**

Explanations: The monthly average values are calculated on the half hour emissin values. Measured values of the concentrations are calculated at 10 vol. of O2  
Results of the measurments are represented in Nm3 (Nm3 - T=273K, P=101,3kP, dry gas)

**Note: Due to maintenance, Kiln 3 is not in operation on 15.12.2022 and 22.12.2022.**

## MONTHLY REPORT FROM EMISSION MONITORING IN TITAN CEMENTARNICA USJE - KILN No.4



дек.22	Dust (mg/Nm <sup>3</sup> ) МДК 30mg/m <sup>3</sup>	МДК 30mg/m <sup>3</sup>	SO <sub>2</sub> (mg/Nm <sup>3</sup> ) МДК 400mg/m <sup>3</sup>	МДК 400mg/m <sup>3</sup>	NOx (mg/Nm <sup>3</sup> ) МДК 800mg/m <sup>3</sup>	МДК 800mg/m <sup>3</sup>	Comments
01.12.2022	27,32	30	8,84	400	617,85	800	
02.12.2022	26,05	30	10,73	400	668,81	800	
03.12.2022	26,37	30	76,8	400	690,75	800	
04.12.2022	25,21	30	153,27	400	647,74	800	
05.12.2022	25,69	30	133,04	400	723,18	800	
06.12.2022	24,52	30	24,49	400	714,18	800	
07.12.2022	24,2	30	6,75	400	667,1	800	
08.12.2022	26,87	30	22,29	400	672,55	800	
09.12.2022	27,61	30	19,98	400	696,51	800	
10.12.2022	27,11	30	26,84	400	572,46	800	
11.12.2022	28,56	30	158,79	400	733,89	800	
12.12.2022	27,92	30	100,78	400	708,99	800	
13.12.2022	28,59	30	41,66	400	720,77	800	
14.12.2022	27,78	30	25,16	400	626,76	800	
15.12.2022	13,12	30	17,37	400	669	800	
16.12.2022	13,4	30	60,39	400	674,03	800	
17.12.2022	13,92	30	118,43	400	568,88	800	
18.12.2022	12,42	30	110,56	400	662,87	800	
19.12.2022	8,77	30	56,29	400	678,24	800	
20.12.2022	8,63	30	85,84	400	631,73	800	
21.12.2022	9,33	30	97,25	400	609,29	800	
22.12.2022	10,87	30	39,33	400	557,62	800	
23.12.2022	9,08	30	42,15	400	707,09	800	
24.12.2022	8,81	30	11,66	400	756,88	800	
25.12.2022	9,02	30	20,63	400	669,25	800	
26.12.2022	8,36	30	15,15	400	725,48	800	
27.12.2022	9,11	30	8,66	400	723,61	800	
28.12.2022	8,85	30	7,84	400	747,15	800	
29.12.2022	10,12	30	26,44	400	653,31	800	
30.12.2022	11,19	30	80,94	400	623,35	800	
31.12.2022	12,47	30	41,82	400	633,69	800	
<b>Average</b>	<b>17,5</b>	<b>30</b>	<b>52,6</b>	<b>400</b>	<b>669,9</b>	<b>800</b>	

**MLV: Maximum Limit Value**

Explanations: The monthly average values are calculated on the half hour emissin values. Measured values of the concentrations are calculated at 10 vol. of O2  
Results of the measurments are represented in Nm3 (Nm3 - T=273K, P=101,3kP, dry gas)

**Note:**