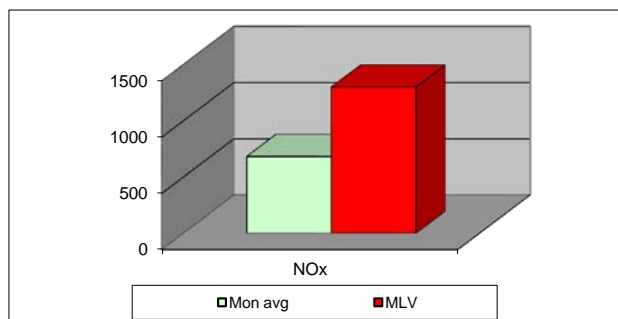
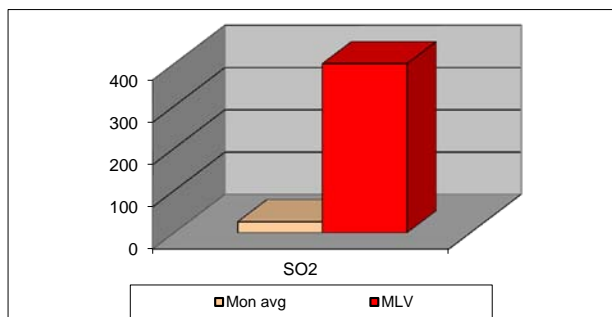
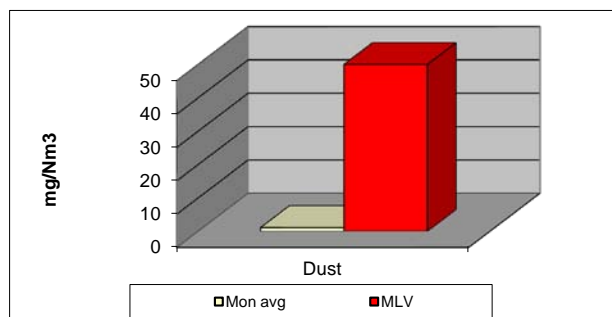


MONTHLY REPORT FROM EMISSION MONITORING IN TITAN CEMENTARNICA USJE - KILN No.3



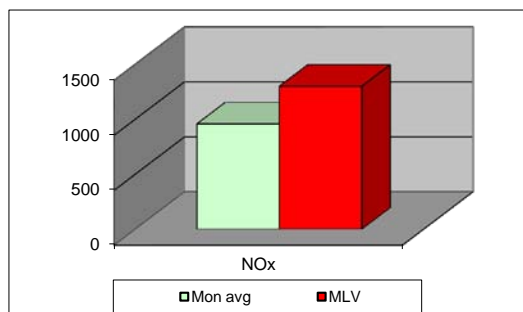
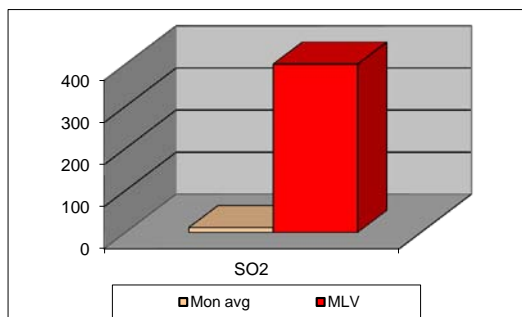
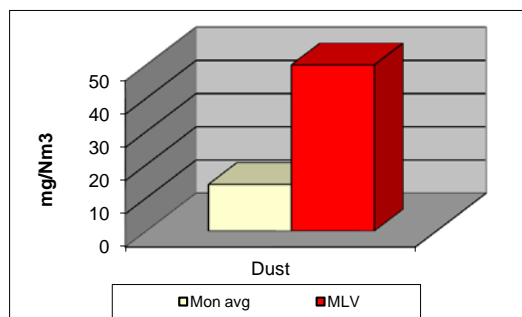
| October 2012 | Dust | МДК 50mg/m ³ | SO ₂ | МДК 400mg/m ³ | NOx | МДК 1300mg/m ³ | Comments |
|----------------|--|-------------------------|---|--------------------------|--|---------------------------|----------|
| | (mg/Nm ³) МДК 50mg/m ³ | | (mg/Nm ³) МДК 400mg/m ³ | | (mg/Nm ³) МДК 1300mg/m ³ | | |
| 01.10.2012 | 1,13 | 50 | 20,61 | 400 | 760,22 | 1300 | |
| 02.10.2012 | 1,4 | 50 | 13,09 | 400 | 694,07 | 1300 | |
| 03.10.2012 | 1,67 | 50 | 17,44 | 400 | 879,72 | 1300 | |
| 04.10.2012 | 1,62 | 50 | 21,58 | 400 | 627,45 | 1300 | |
| 05.10.2012 | 1,53 | 50 | 34,54 | 400 | 522,06 | 1300 | |
| 06.10.2012 | 1,74 | 50 | 24,1 | 400 | 623,37 | 1300 | |
| 07.10.2012 | 1,95 | 50 | 25,62 | 400 | 536,26 | 1300 | |
| 08.10.2012 | 1,41 | 50 | 11,6 | 400 | 565,48 | 1300 | |
| 09.10.2012 | | 50 | | 400 | | 1300 | |
| 10.10.2012 | | 50 | | 400 | | 1300 | |
| 11.10.2012 | | 50 | | 400 | | 1300 | |
| 12.10.2012 | | 50 | | 400 | | 1300 | |
| 13.10.2012 | | 50 | | 400 | | 1300 | |
| 14.10.2012 | | 50 | | 400 | | 1300 | |
| 15.10.2012 | | 50 | | 400 | | 1300 | |
| 16.10.2012 | | 50 | | 400 | | 1300 | |
| 17.10.2012 | | 50 | | 400 | | 1300 | |
| 18.10.2012 | | 50 | | 400 | | 1300 | |
| 19.10.2012 | | 50 | | 400 | | 1300 | |
| 20.10.2012 | | 50 | | 400 | | 1300 | |
| 21.10.2012 | 0,72 | 50 | 34,56 | 400 | 643,23 | 1300 | |
| 22.10.2012 | 0,72 | 50 | 33,47 | 400 | 549,87 | 1300 | |
| 23.10.2012 | 0,6 | 50 | 21,43 | 400 | 571,79 | 1300 | |
| 24.10.2012 | 0,77 | 50 | 16,63 | 400 | 763,52 | 1300 | |
| 25.10.2012 | 0,75 | 50 | 16,91 | 400 | 775,42 | 1300 | |
| 26.10.2012 | 0,79 | 50 | 21,21 | 400 | 676,93 | 1300 | |
| 27.10.2012 | 0,9 | 50 | 18,88 | 400 | 751,1 | 1300 | |
| 28.10.2012 | 0,76 | 50 | 29 | 400 | 799 | 1300 | |
| 29.10.2012 | 0,64 | 50 | 20,48 | 400 | 787,47 | 1300 | |
| 30.10.2012 | 0,92 | 50 | 49,21 | 400 | 802,73 | 1300 | |
| 31.10.2012 | 1,01 | 50 | 59,93 | 400 | 649,02 | 1300 | |
| Average | 1,1 | 50 | 25,8 | 400 | 683,1 | 1300 | |

MLV: Maximum Limit Value

Забелешка: Погонот Подготовка-Печка 3, поради ремонт (замена на огноотпорни материјали) е запрен на 09.10.2012 год.
Истиот е повторно пуштен во работа на 21.10.2012

Eplanations: The monthly average values are calculated on the half hour emissin values. Measured values of the concentrations are calculated at 10 vol. of O₂
Results of the measurments are represented in Nm3 (Nm3 - T=273K, P=101,3kP, dry gas)c

MONTHLY REPORT FROM EMISSION MONITORING IN TITAN CEMENTARNICA USJE - KILN No.4



| October 2012 | Dust (mg/Nm ³) МДК 50mg/m ³ | МДК 50mg/m ³ | SO ₂ (mg/Nm ³) МДК 400mg/m ³ | МДК 400mg/m ³ | NOx (mg/Nm ³) МДК 1300mg/m ³ | МДК 1300mg/m ³ | Comments |
|----------------|--|-------------------------|--|--------------------------|---|---------------------------|----------|
| 01.10.2012 | | 50 | | 400 | | 1300 | |
| 02.10.2012 | | 50 | | 400 | | 1300 | |
| 03.10.2012 | | 50 | | 400 | | 1300 | |
| 04.10.2012 | | 50 | | 400 | | 1300 | |
| 05.10.2012 | 13,06 | 50 | 19,45 | 400 | 824,2 | 1300 | |
| 06.10.2012 | 12,48 | 50 | 4,28 | 400 | 1046,61 | 1300 | |
| 07.10.2012 | 14,59 | 50 | 3,27 | 400 | 911,21 | 1300 | |
| 08.10.2012 | 14,03 | 50 | 8,13 | 400 | 958,36 | 1300 | |
| 09.10.2012 | 13,54 | 50 | 2,98 | 400 | 1056,4 | 1300 | |
| 10.10.2012 | 12,83 | 50 | 3,49 | 400 | 986,19 | 1300 | |
| 11.10.2012 | 14,74 | 50 | 9,39 | 400 | 1023,12 | 1300 | |
| 12.10.2012 | 22,81 | 50 | 35,99 | 400 | 961,3 | 1300 | |
| 13.10.2012 | 21,18 | 50 | 3,63 | 400 | 1105,51 | 1300 | |
| 14.10.2012 | 21,47 | 50 | 3,11 | 400 | 928,37 | 1300 | |
| 15.10.2012 | 25,41 | 50 | 6,54 | 400 | 1019,15 | 1300 | |
| 16.10.2012 | 23,59 | 50 | 3,07 | 400 | 1075,17 | 1300 | |
| 17.10.2012 | 19,82 | 50 | 3,9 | 400 | 1044,31 | 1300 | |
| 18.10.2012 | 22,49 | 50 | 4,96 | 400 | 967,88 | 1300 | |
| 19.10.2012 | 29,15 | 50 | 4,38 | 400 | 1001,67 | 1300 | |
| 20.10.2012 | 24,89 | 50 | 5,45 | 400 | 1052,04 | 1300 | |
| 21.10.2012 | 25,14 | 50 | 3,25 | 400 | 1102,01 | 1300 | |
| 22.10.2012 | 8,5 | 50 | 3,72 | 400 | 1083,63 | 1300 | |
| 23.10.2012 | 5,46 | 50 | 5,3 | 400 | 987,45 | 1300 | |
| 24.10.2012 | 7,08 | 50 | 3,03 | 400 | 1049,03 | 1300 | |
| 25.10.2012 | 6,89 | 50 | 4,39 | 400 | 1013,5 | 1300 | |
| 26.10.2012 | 3,02 | 50 | 3,99 | 400 | 945,58 | 1300 | |
| 27.10.2012 | 3,26 | 50 | 5,89 | 400 | 675,21 | 1300 | |
| 28.10.2012 | 3,1 | 50 | 4,58 | 400 | 478,5 | 1300 | |
| 29.10.2012 | 2,79 | 50 | 9,73 | 400 | 749,28 | 1300 | |
| 30.10.2012 | 3,45 | 50 | 27,24 | 400 | 931,55 | 1300 | |
| 31.10.2012 | 4,32 | 50 | 111,85 | 400 | 873,94 | 1300 | |
| Average | 14,0 | 50 | 11,3 | 400 | 957,5 | 1300 | |

MLV: Maximum Limit Value

Забелешка: Погонот Подготовка-Печка 4, поради ремонт (замена на огноотпорни материјали) е запрен на 01.10.2012 год.
Истиот е повторно пуштен во работа на 05.10.2012.