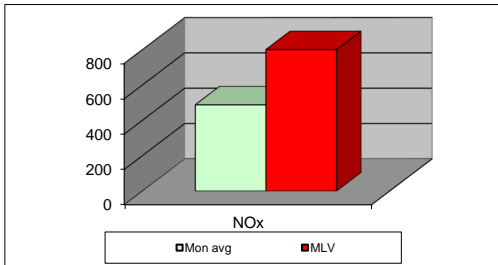
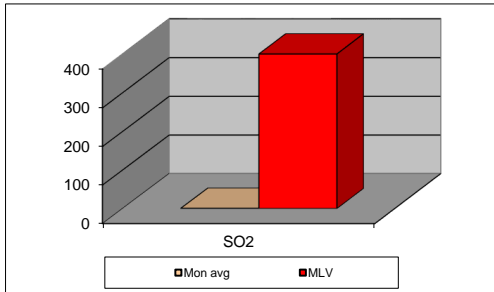
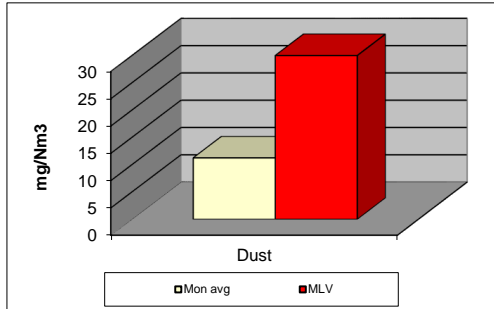


MONTHLY REPORT FROM EMISSION MONITORING IN TITAN CEMENTARNICA USJE - KILN No.3



jun.21	Dust (mg/Nm ³)	МДК 30mg/m ³	SO ₂ (mg/Nm ³)	МДК 400mg/m ³	NOx (mg/Nm ³)	МДК 800mg/m ³	Comments
	МДК 30mg/m ³		МДК 400mg/m ³		МДК 800mg/m ³		
01.06.2021	9,21	30	0,01	400	352,33	800	
02.06.2021	10,12	30	0,03	400	480,19	800	
03.06.2021	10,01	30	0,02	400	417,69	800	
04.06.2021		30		400		800	
05.06.2021	9,21	30	0,2	400	495,64	800	
06.06.2021	10	30	0,38	400	496,06	800	
07.06.2021	10,09	30	0,88	400	514,55	800	
08.06.2021	10,55	30	0,18	400	548,07	800	
09.06.2021	10,35	30	0,24	400	540,39	800	
10.06.2021	10,21	30	0,19	400	503,48	800	
11.06.2021	10,37	30	0,37	400	571,27	800	
12.06.2021	9,52	30	0,83	400	461,23	800	
13.06.2021	10,02	30	0,15	400	572,53	800	
14.06.2021	9,93	30	0,22	400	518,49	800	
15.06.2021	9,65	30	0,02	400	583,47	800	
16.06.2021	10,36	30	0,06	400	448,95	800	
17.06.2021	11,46	30	0,14	400	483,36	800	
18.06.2021	11,52	30	0,13	400	635,96	800	
19.06.2021	10,7	30	4,2	400	548,25	800	
20.06.2021	10,85	30	8,01	400	635,1	800	
21.06.2021	11,09	30	1,22	400	624,01	800	
22.06.2021	12,47	30	2,7	400	514,94	800	
23.06.2021	13,42	30	3,35	400	471,2	800	
24.06.2021	14,27	30	0,39	400	574,15	800	
25.06.2021	14,02	30	0,09	400	484,05	800	
26.06.2021	13,13	30	0,07	400	413,89	800	
27.06.2021	12,76	30	0,13	400	423,37	800	
28.06.2021	13,04	30	0,06	400	418,83	800	
29.06.2021	12,81	30	0,15	400	251,27	800	
30.06.2021	13,29	30	0,1	400	315,44	800	
Average	11,3	30	0,8	400	487,6	800	

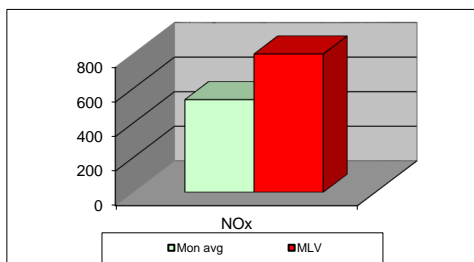
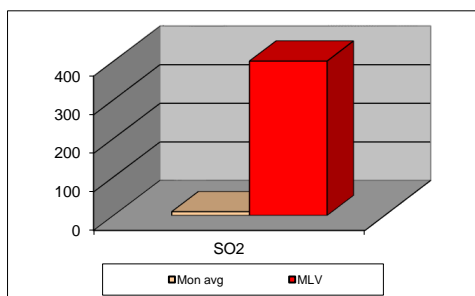
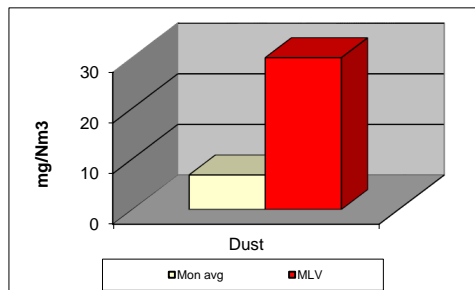
MLV: Maximum Limit Value

Explanations: The monthly average values are calculated on the half hour emissin values. Measured values of the concentrations are calculated at 10 vol. of O2

Results of the measurments are represented in Nm3 (Nm3 - T=273K, P=101,3kP, dry gas)

Note: Due to service activities, Kiln 3 is not in operation on 04.06.2021.

MONTHLY REPORT FROM EMISSION MONITORING IN TITAN CEMENTARNICA USJE - KILN No.4



jun.21	Dust (mg/Nm ³) МДК 30mg/m ³	МДК 30mg/m ³	SO ₂ (mg/Nm ³) МДК 400mg/m ³	МДК 400mg/m ³	NOx (mg/Nm ³) МДК 800mg/m ³	МДК 800mg/m ³	Comments
01.06.2021	5,77	30	10,52	400	413,63	800	
02.06.2021	5,16	30	9,96	400	423,81	800	
03.06.2021	7,97	30	7,97	400	459,73	800	
04.06.2021	7,86	30	10,35	400	513,5	800	
05.06.2021	6,24	30	9,83	400	513,37	800	
06.06.2021	6,75	30	9,97	400	441,21	800	
07.06.2021	6,31	30	9,84	400	444,66	800	
08.06.2021	6,75	30	9,98	400	474,67	800	
09.06.2021	6,28	30	9,64	400	492,92	800	
10.06.2021	6,37	30	9,49	400	542,81	800	
11.06.2021	8,08	30	9,34	400	479,05	800	
12.06.2021	6,47	30	9,67	400	541,29	800	
13.06.2021	6,98	30	9,91	400	598,66	800	
14.06.2021	6,56	30	10,01	400	556,29	800	
15.06.2021	6,05	30	9,46	400	513,01	800	
16.06.2021	6,66	30	11,64	400	574,56	800	
17.06.2021	7,8	30	7,88	400	603,56	800	
18.06.2021	6,44	30	9,19	400	597,12	800	
19.06.2021	6,46	30	8,2	400	641,07	800	
20.06.2021	6,76	30	8,17	400	657,18	800	
21.06.2021	7,75	30	8,79	400	579,29	800	
22.06.2021	7,62	30	8,31	400	591,66	800	
23.06.2021	7,16	30	9,81	400	652,1	800	
24.06.2021	8,22	30	18,49	400	552,3	800	
25.06.2021		30		400		800	
26.06.2021		30		400		800	
27.06.2021		30		400		800	
28.06.2021		30		400		800	
29.06.2021		30		400		800	
30.06.2021		30		400		800	
Average	6,8	30	9,8	400	535,6	800	

MLV: Maximum Limit Value

Explanations: The monthly average values are calculated on the half hour emissin values. Measured values of the concentrations are calculated at 10 vol. of O2
Results of the measurments are represented in Nm3 (Nm3 - T=273K, P=101,3kP, dry gas)

Note: Due to service activities, Kiln 4 is not in operation from 25.06.2021 to 30.06.2021.