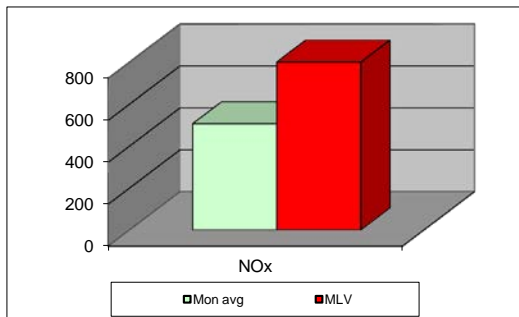
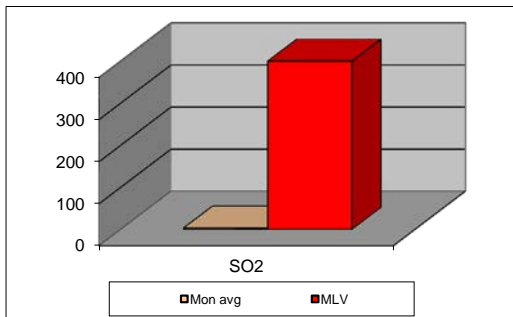
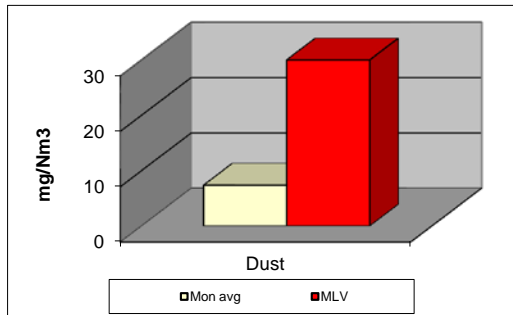


MONTHLY REPORT FROM EMISSION MONITORING IN TITAN CEMENTARNICA USJE - KILN No.3



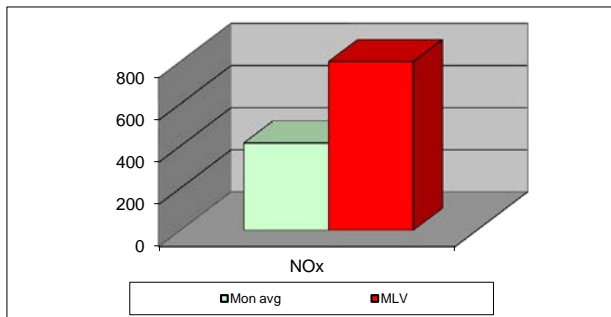
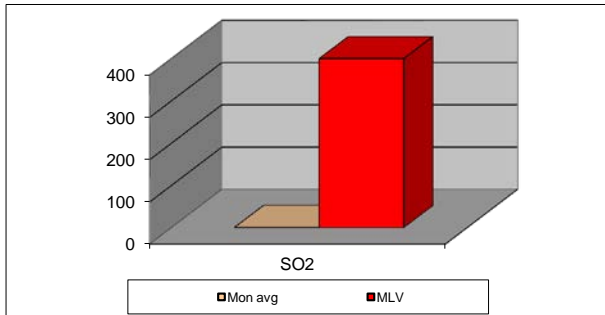
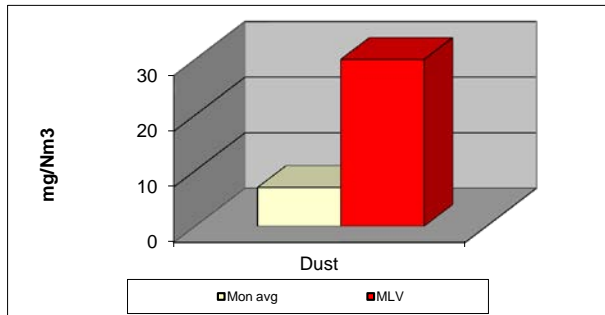
August 2017	Dust (mg/Nm ³) МДК 30mg/m ³	МДК 30mg/m ³	SO ₂ (mg/Nm ³) МДК 400mg/m ³	МДК 400mg/m ³	NOx (mg/Nm ³) МДК 800mg/m ³	МДК 800mg/m ³	Comments
01.08.2017	6,07	30	6,96	400	596,81	800	
02.08.2017	6	30	6,48	400	572,49	800	
03.08.2017	5,13	30	5	400	618,01	800	
04.08.2017	5,58	30	3,96	400	582,29	800	
05.08.2017	5,55	30	2,96	400	563,47	800	
06.08.2017	5,2	30	1,12	400	569,75	800	
07.08.2017	5,84	30	3,23	400	587,95	800	
08.08.2017	7,44	30	1,93	400	494,79	800	
09.08.2017	8,11	30	2,97	400	343,69	800	
10.08.2017	8,61	30	3,56	400	463,2	800	
11.08.2017	8,59	30	2,96	400	489,07	800	
12.08.2017	8,45	30	3,42	400	568,66	800	
13.08.2017	7,6	30	1,52	400	576,67	800	
14.08.2017	7,21	30	3,55	400	460,84	800	
15.08.2017	7,88	30	1,88	400	515,06	800	
16.08.2017	7,97	30	1,77	400	466,56	800	
17.08.2017	7,99	30	2,54	400	451,15	800	
18.08.2017	7,87	30	2,63	400	443,61	800	
19.08.2017	8,5	30	1,83	400	501,75	800	
20.08.2017	8,23	30	1,24	400	447,46	800	
21.08.2017	8,18	30	1,89	400	549,65	800	
22.08.2017	7,47	30	1,69	400	449,46	800	
23.08.2017	7,75	30	2,72	400	559,74	800	
24.08.2017	7,54	30	3,52	400	450,66	800	
25.08.2017	7,52	30	3,13	400	545,57	800	
26.08.2017	7,93	30	3,08	400	514,89	800	
27.08.2017	7,81	30	4	400	386,12	800	
28.08.2017	7,79	30	2,28	400	416,56	800	
29.08.2017	8	30	4,05	400	483,92	800	
30.08.2017	7,24	30	12,19	400	457,87	800	
31.08.2017	7,54	30	2,5	400	501,09	800	
Average	7,4	30	3,3	400	505,9	800	

MLV: Maximum Limit Value

Explanations: The monthly average values are calculated on the half hour emissin values. Measured values of the concentrations are calculated at 10 vol. of O2
Results of the measurments are represented in Nm3 (Nm3 - T=273K, P=101,3kP, dry gas)

Note: Due to technical problems, Kiln 3 for clinker production was out of operation from 23.08.2017 until 24.08.2017.

MONTHLY REPORT FROM EMISSION MONITORING IN TITAN CEMENTARNICA USJE - KILN No.4



August 2017	Dust (mg/Nm ³) МДК 30mg/m ³	МДК 30mg/m ³	SO ₂ (mg/Nm ³) МДК 400mg/m ³	МДК 400mg/m ³	NOx (mg/Nm ³) МДК 800mg/m ³	МДК 800mg/m ³	Comments
01.08.2017		30		400		800	
02.08.2017	9,74	30	0,22	400	472,99	800	
03.08.2017	8,7	30	1,09	400	367,66	800	
04.08.2017	10,74	30	0,63	400	346,2	800	
05.08.2017	9,71	30	2,21	400	399,54	800	
06.08.2017	8,81	30	2,59	400	360,39	800	
07.08.2017		30		400		800	
08.08.2017	5,47	30	0,29	400	379,79	800	
09.08.2017	5,17	30	0,36	400	456,33	800	
10.08.2017	5,23	30	3,94	400	428,57	800	
11.08.2017	5,52	30	5,23	400	321,08	800	
12.08.2017	5,35	30	1,17	400	448,34	800	
13.08.2017	4,23	30	2,34	400	403,38	800	
14.08.2017	4,74	30	0,18	400	374,29	800	
15.08.2017	4,52	30	0,01	400	453,9	800	
16.08.2017	5,39	30	0,02	400	437,22	800	
17.08.2017	4,72	30	0,08	400	494,81	800	
18.08.2017	5,02	30	0,14	400	445,49	800	
19.08.2017	5,32	30	0,25	400	434,23	800	
20.08.2017	5,16	30	0,2	400	451,48	800	
21.08.2017	6,19	30	0,21	400	381,53	800	
22.08.2017	7,23	30	0,01	400	407,37	800	
23.08.2017	7,35	30	0,01	400	457,97	800	
24.08.2017	7,88	30	0	400	498,8	800	
25.08.2017	7,82	30	0	400	448,95	800	
26.08.2017	7,68	30	0	400	411,76	800	
27.08.2017	7,84	30	0	400	392,08	800	
28.08.2017	13,19	30	0	400	431,76	800	
29.08.2017	8,44	30	0,03	400	365,28	800	
30.08.2017	7,7	30	0	400	327,38	800	
31.08.2017	7,67	30	0,14	400	407,78	800	
Average	7,0	30	0,7	400	414,0	800	

MLV: Maximum Limit Value

Explanations: The monthly average values are calculated on the half hour emissin values. Measured values of the concentrations are calculated at 10 vol. of O2
Results of the measurments are represented in Nm3 (Nm3 - T=273K, P=101,3kP, dry gas)

Note: Due to technical problems, Kiln 4 for clinker production was out of operation from 26.07.2017 until 02.08.2017, and from 06.08.2017 until 08.08.2017.