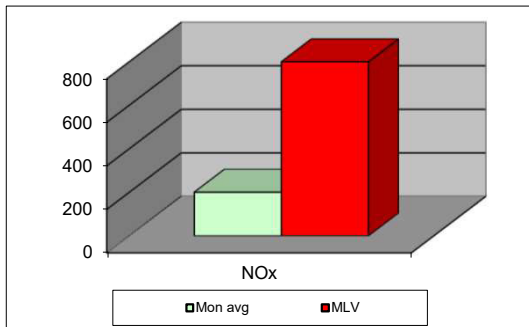
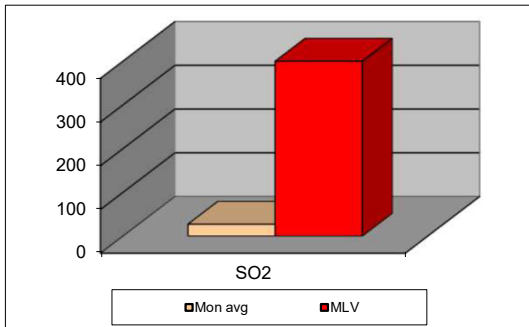
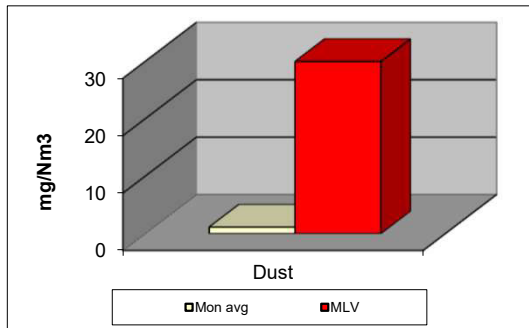


## MONTHLY REPORT FROM EMISSION MONITORING IN TITAN CEMENTARNICA USJE - KILN No.3



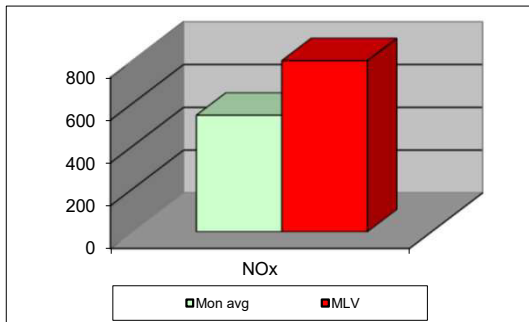
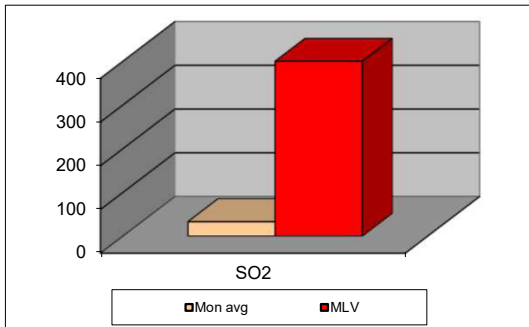
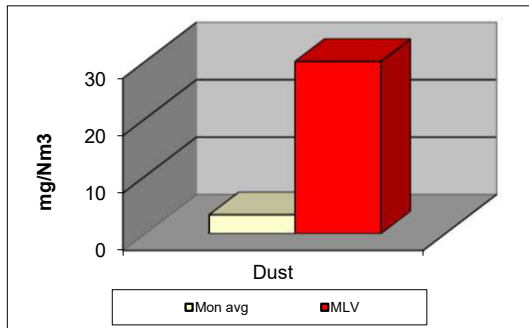
December 2019	Dust (mg/Nm <sup>3</sup> ) МДК 30mg/m <sup>3</sup>	МДК 30mg/m <sup>3</sup>	SO <sub>2</sub> (mg/Nm <sup>3</sup> ) МДК 400mg/m <sup>3</sup>	МДК 400mg/m <sup>3</sup>	NOx (mg/Nm <sup>3</sup> ) МДК 800mg/m <sup>3</sup>	МДК 800mg/m <sup>3</sup>	Comments
12/17/2019	1.16	30	6.97	400	200.14	800	
12/2/2019	1.15	30	48.11	400	201.31	800	
12/3/2019		30		400		800	
12/4/2019		30		400		800	
12/5/2019		30		400		800	
12/6/2019		30		400		800	
12/7/2019		30		400		800	
12/8/2019		30		400		800	
12/9/2019		30		400		800	
12/10/2019		30		400		800	
12/11/2019		30		400		800	
12/12/2019		30		400		800	
12/13/2019		30		400		800	
12/14/2019		30		400		800	
12/15/2019		30		400		800	
12/16/2019		30		400		800	
12/17/2019		30		400		800	
12/18/2019		30		400		800	
12/19/2019		30		400		800	
12/20/2019		30		400		800	
12/21/2019		30		400		800	
12/22/2019		30		400		800	
12/23/2019		30		400		800	
12/24/2019		30		400		800	
12/25/2019		30		400		800	
12/26/2019		30		400		800	
12/27/2019		30		400		800	
12/28/2019		30		400		800	
12/29/2019		30		400		800	
12/30/2019		30		400		800	
12/31/2019		30		400		800	
<b>Average</b>	<b>1.2</b>	<b>30</b>	<b>27.5</b>	<b>400</b>	<b>200.7</b>	<b>800</b>	

**MLV: Maximum Limit Value**

Explanations: The monthly average values are calculated on the half hour emission values. Measured values of the concentrations are calculated at 10 vol. of O<sub>2</sub>. Results of the measurements are represented in Nm<sup>3</sup> (Nm<sup>3</sup> - T=273K, P=101,3kP, dry gas)

**Note: Due to regular maintenance, kiln no.3 is shut down on 02.12.2019.**

## MONTHLY REPORT FROM EMISSION MONITORING IN TITAN CEMENTARNICA USJE - KILN No.4



December 2019	Dust (mg/Nm <sup>3</sup> ) МДК 30mg/m <sup>3</sup>	МДК 30mg/m <sup>3</sup>	SO <sub>2</sub> (mg/Nm <sup>3</sup> ) МДК 400mg/m <sup>3</sup>	МДК 400mg/m <sup>3</sup>	NOx (mg/Nm <sup>3</sup> ) МДК 800mg/m <sup>3</sup>	МДК 800mg/m <sup>3</sup>	Comments
12/1/2019	1.56	30	16.74	400	677.41	800	
12/2/2019	1.91	30	59.15	400	549.66	800	
12/3/2019	1.96	30	59.91	400	649.12	800	
12/4/2019	1.83	30	16.7	400	477.89	800	
12/5/2019	3.68	30	36.19	400	572.57	800	
12/6/2019	6.32	30	1.46	400	370.82	800	
12/7/2019	6.16	30	2.5	400	363.14	800	
12/8/2019	5.69	30	7.99	400	541.67	800	
12/9/2019	4.29	30	5.15	400	402.81	800	
12/10/2019	3.84	30	27.19	400	572.14	800	
12/11/2019	2.95	30	14.33	400	620.77	800	
12/12/2019	4.41	30	175.8	400	575.02	800	
12/13/2019	4.71	30	157.2	400	578.45	800	
12/14/2019	3.83	30	142.21	400	706.87	800	
12/15/2019		30		400		800	
12/16/2019	4.18	30	11.54	400	558.14	800	
12/17/2019	4	30	17.43	400	406.38	800	
12/18/2019	2.86	30	18.26	400	407.81	800	
12/19/2019	3.07	30	34.02	400	379.23	800	
12/20/2019	3.58	30	58.9	400	434.31	800	
12/21/2019	3.88	30	42.8	400	710.21	800	
12/22/2019	3.38	30	42.26	400	500.72	800	
12/23/2019	2.88	30	54.27	400	560.51	800	
12/24/2019	2	30	22.95	400	543.55	800	
12/25/2019	2.41	30	14.14	400	584.91	800	
12/26/2019	2.46	30	6.72	400	586.31	800	
12/27/2019	2.45	30	8.45	400	662.99	800	
12/28/2019	2.04	30	7.24	400	676.3	800	
12/29/2019	2.06	30	8.58	400	545.36	800	
12/30/2019	2.02	30	9.87	400	662.07	800	
12/31/2019	3.93	30	5.37	400	639.89	800	
<b>Average</b>	<b>3.3</b>	<b>30</b>	<b>33.3</b>	<b>400</b>	<b>544.7</b>	<b>800</b>	

**MLV: Maximum Limit Value**

Explanations: The monthly average values are calculated on the half hour emissin values. Measured values of the concentrations are calculated at 10 vol. of O2  
Results of the measurmets are represented in Nm3 (Nm3 - T=273K, P=101,3kP, dry gas)

**Note: Kiln no.4 for clinker production was out of operation from 14.12.2019 until 16.12.2019.**