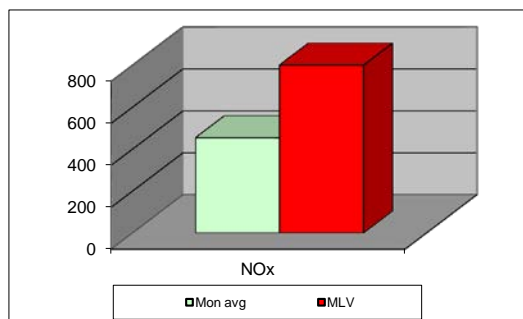
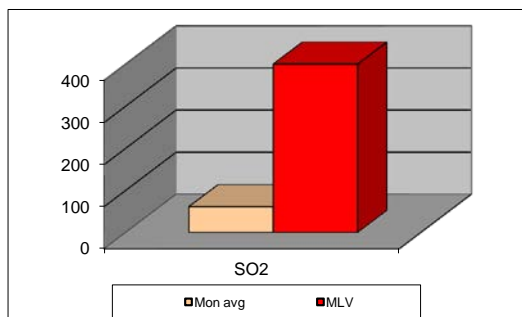
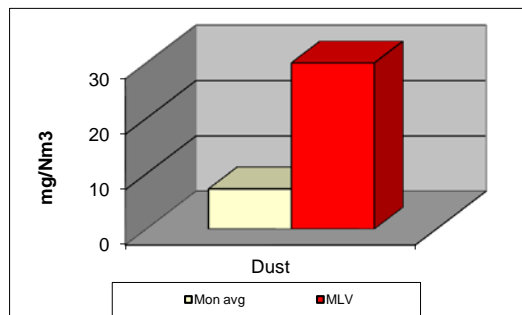


MONTHLY REPORT FROM EMISSION MONITORING IN TITAN CEMENTARNICA USJE - KILN No.3



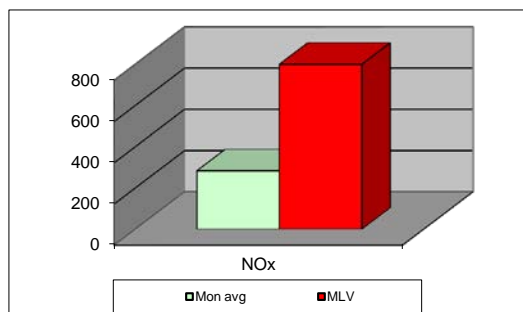
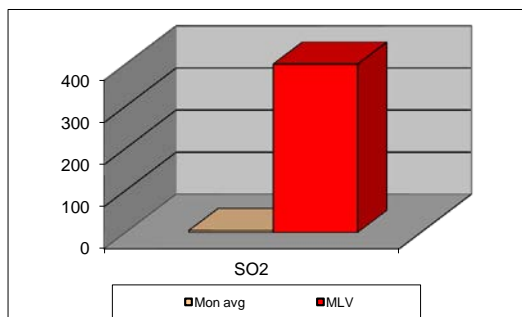
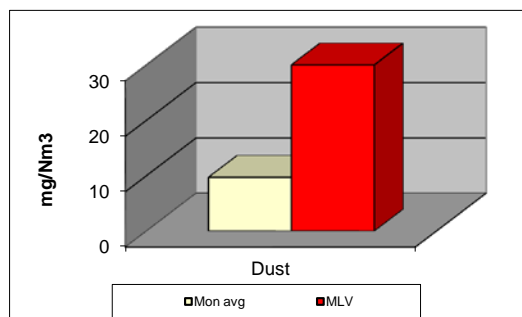
December 2017	Dust (mg/Nm ³) МДК 30mg/m ³	МДК 30mg/m ³	SO ₂ (mg/Nm ³) МДК 400mg/m ³	МДК 400mg/m ³	NO _x (mg/Nm ³) МДК 800mg/m ³	МДК 800mg/m ³	Comments
01.12.2017	7,11	30	7,16	400	455,05	800	
02.12.2017	7,96	30	26,09	400	374,08	800	
03.12.2017	6,59	30	22,66	400	451,99	800	
04.12.2017	7,11	30	55,12	400	412,17	800	
05.12.2017	7,32	30	41,44	400	426,48	800	
06.12.2017	6,46	30	101,08	400	569,79	800	
07.12.2017	8,1	30	173,37	400	486,27	800	
08.12.2017		30		400		800	
09.12.2017		30		400		800	
10.12.2017		30		400		800	
11.12.2017		30		400		800	
12.12.2017		30		400		800	
13.12.2017		30		400		800	
14.12.2017		30		400		800	
15.12.2017		30		400		800	
16.12.2017		30		400		800	
17.12.2017		30		400		800	
18.12.2017		30		400		800	
19.12.2017		30		400		800	
20.12.2017		30		400		800	
21.12.2017		30		400		800	
22.12.2017		30		400		800	
23.12.2017		30		400		800	
24.12.2017		30		400		800	
25.12.2017		30		400		800	
26.12.2017		30		400		800	
27.12.2017		30		400		800	
28.12.2017		30		400		800	
29.12.2017		30		400		800	
30.12.2017		30		400		800	
31.12.2017		30		400		800	
Average	7,2	30	61,0	400	453,7	800	

MLV: Maximum Limit Value

Explanations: The monthly average values are calculated on the half hour emissin values. Measured values of the concentrations are calculated at 10 vol. of O2
Results of the measurments are represented in Nm3 (Nm3 - T=273K, P=101,3kP, dry gas)

Note: Kiln no.3 that was not in operation from 07.12.2017.

MONTHLY REPORT FROM EMISSION MONITORING IN TITAN CEMENTARNICA USJE - KILN No.4



December 2017	Dust (mg/Nm ³) МДК 30mg/m ³	МДК 30mg/m ³	SO ₂ (mg/Nm ³) МДК 400mg/m ³	МДК 400mg/m ³	NO _x (mg/Nm ³) МДК 800mg/m ³	МДК 800mg/m ³	Comments
01.12.2017	9,2	30	8,05	400	293,92	800	
02.12.2017	9,86	30	1,99	400	341,73	800	
03.12.2017	11,87	30	0,15	400	292,9	800	
04.12.2017	10,12	30	0,04	400	287,85	800	
05.12.2017	10,05	30	0	400	256,49	800	
06.12.2017	10,56	30	0,23	400	221,92	800	
07.12.2017	11,81	30	0,05	400	248,33	800	
08.12.2017	11,36	30	0,15	400	276,4	800	
09.12.2017	10,92	30	0,35	400	205,77	800	
10.12.2017	9,76	30	0,16	400	232,73	800	
11.12.2017	10,95	30	0	400	284,29	800	
12.12.2017	11,07	30	0,58	400	211,05	800	
13.12.2017	10,74	30	0,7	400	279,7	800	
14.12.2017	9,66	30	0,09	400	223,51	800	
15.12.2017	9,86	30	1,8	400	220,68	800	
16.12.2017	8,6	30	4,98	400	217,93	800	
17.12.2017	7,88	30	5,61	400	197,51	800	
18.12.2017	9,54	30	1,06	400	189,01	800	
19.12.2017	9,57	30	0,93	400	258,76	800	
20.12.2017	8,92	30	0,01	400	325,89	800	
21.12.2017	8,95	30	0,02	400	219,3	800	
22.12.2017	9,78	30	0,71	400	138,52	800	
23.12.2017	8,83	30	0,31	400	103,71	800	
24.12.2017		30		400		800	
25.12.2017	9,45	30	10,01	400	360,03	800	
26.12.2017	9,54	30	29,03	400	404,9	800	
27.12.2017	8,36	30	22,71	400	366,41	800	
28.12.2017	8,08	30	9,35	400	300,99	800	
29.12.2017	7,65	30	6,33	400	416,03	800	
30.12.2017	10,32	30	16,38	400	617,56	800	
31.12.2017	7,88	30	10,08	400	513,02	800	
Average	9,7	30	4,4	400	283,6	800	

MLV: Maximum Limit Value

Explanations: The monthly average values are calculated on the half hour emissin values. Measured values of the concentrations are calculated at 10 vol. of O2
Results of the measurments are represented in Nm3 (Nm3 - T=273K, P=101,3kP, dry gas)

Note: Kiln no.4 was stopped on the 24.12.2017