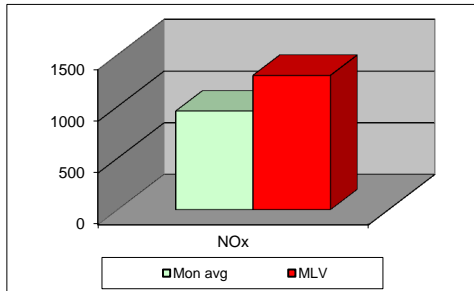
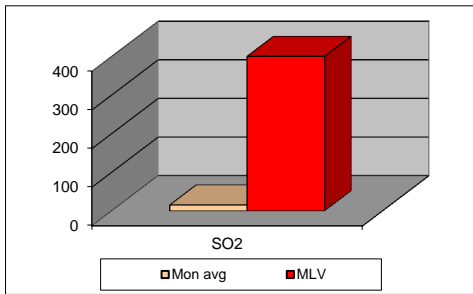
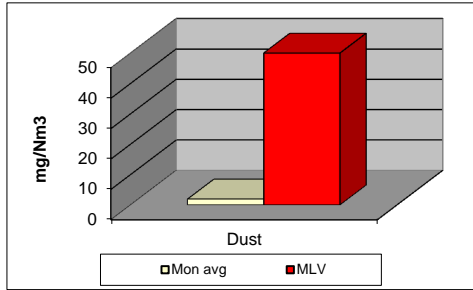


MONTHLY REPORT FROM EMISSION MONITORING IN TITAN CEMENTARNICA USJE - KILN No.3

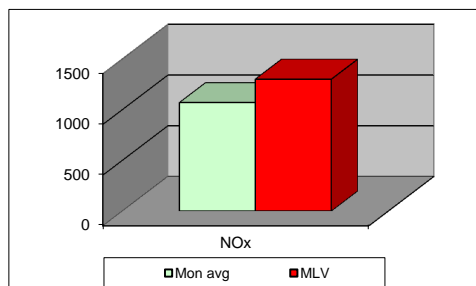
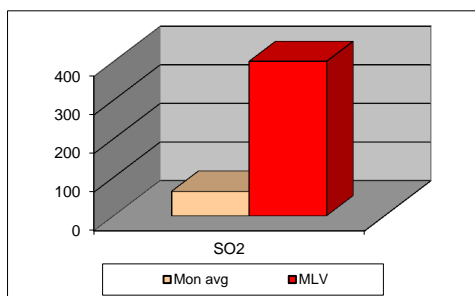
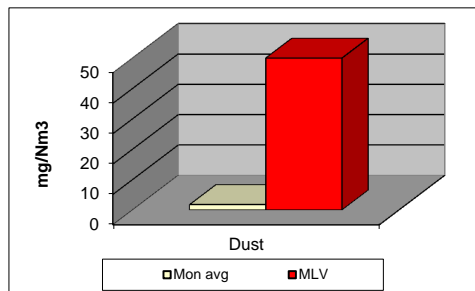


March 2012	Dust (mg/Nm <sup>3</sup> ) МДК 50mg/m <sup>3</sup>	МДК 50mg/m <sup>3</sup>	SO <sub>2</sub> (mg/Nm <sup>3</sup> ) МДК 400mg/m <sup>3</sup>	МДК 400mg/m <sup>3</sup>	NOx (mg/Nm <sup>3</sup> ) МДК 1300mg/m <sup>3</sup>	МДК 1300mg/m <sup>3</sup>	Comments
1	/	50	/	400	/	1300	
2	/	50	/	400	/	1300	
3	/	50	/	400	/	1300	
4	/	50	/	400	/	1300	
5	/	50	/	400	/	1300	
6	/	50	/	400	/	1300	
7	/	50	/	400	/	1300	
8	1,39	50	34,41	400	1084,78	1300	
9	0,92	50	24,6	400	880,94	1300	
10	0,18	50	41,17	400	929,35	1300	
11	0,43	50	28,14	400	781,58	1300	
12	0,16	50	26,54	400	719,15	1300	
13	0,25	50	37,28	400	856,13	1300	
14	0,17	50	32,92	400	755,01	1300	
15	0,16	50	34,21	400	865,81	1300	
16	0,75	50	27,74	400	910,27	1300	
17	1,55	50	33,1	400	833,8	1300	
18	0,48	50	35,12	400	985,73	1300	
19	0,1	50	14,34	400	1038,83	1300	
20	1,21	50	0,67	400	929,88	1300	
21	3,24	50	1,25	400	1106,79	1300	
22	3,54	50	0,36	400	994,25	1300	
23	3,65	50	0,18	400	1085,06	1300	
24	3,32	50	0,26	400	1053,09	1300	
25	3,27	50	0,48	400	959,34	1300	
26	4,56	50	0,21	400	1011,11	1300	
27	3,05	50	0,52	400	989,12	1300	
28	3,07	50	0,17	400	1022,11	1300	
29	3,64	50	0,17	400	1039,97	1300	
30	3,11	50	0,18	400	1088,01	1300	
31	2,88	50	0,2	400	1096,25	1300	
<b>Average</b>	<b>2</b>	<b>50</b>	<b>15</b>	<b>400</b>	<b>954</b>	<b>1300</b>	

Maximum Limit Value

Explanations: The monthly average values are calculated on the half hour emission values. Measured values of the concentrations are calculated at 10 vol. of O<sub>2</sub>. Results of the measurements are represented in Nm<sup>3</sup> (Nm<sup>3</sup> - T=273K, P=101,3kP, dry gas)

## MONTHLY REPORT FROM EMISSION MONITORING IN TITAN CEMENTARNICA USJE - KILN No.4



March 2012	Dust (mg/Nm <sup>3</sup> )	MDK 50mg/m <sup>3</sup>	SO <sub>2</sub> (mg/Nm <sup>3</sup> )	MDK 400mg/m <sup>3</sup>	NOx (mg/Nm <sup>3</sup> )	MDK 1300mg/m <sup>3</sup>	Comments
	MDK 50mg/m <sup>3</sup>		MDK 400mg/m <sup>3</sup>		MDK 1300mg/m <sup>3</sup>		
1	/	50	/	400	/	1300	
2	0,8	50	119,78	400	1016,87	1300	
3	0,85	50	64,28	400	1207,46	1300	
4	0,98	50	42,96	400	1231,97	1300	
5	0,63	50	84,38	400	1095,81	1300	
6	0,65	50	75,75	400	1171,91	1300	
7	0,75	50	55,87	400	1156,16	1300	
8	1,16	50	66,35	400	1120,4	1300	
9	/	50	/	400	/	1300	
10	1,07	50	43,45	400	1235,69	1300	
11	0,91	50	163,47	400	1161,17	1300	
12	1,24	50	121,37	400	1128,14	1300	
13	1,48	50	96,51	400	1053,76	1300	
14	2,63	50	26,96	400	1094,85	1300	
15	2,77	50	39,19	400	1089,61	1300	
16	3,55	50	48,96	400	1043,08	1300	
17	5,02	50	53,91	400	650,99	1300	
18	4,93	50	133,79	400	1108,31	1300	
19	2,58	50	132,88	400	1215,02	1300	
20	1,84	50	35,68	400	1089,84	1300	
21	1,75	50	25,49	400	1051,54	1300	
22	1,82	50	43,08	400	1042,43	1300	
23	1,87	50	67,68	400	1132,04	1300	
24	1,43	50	93,55	400	1053,98	1300	
25	1,28	50	80,21	400	1054,23	1300	
26	0,92	50	31,94	400	893,56	1300	
27	1,28	50	20,84	400	957,44	1300	
28	1,42	50	24,11	400	933,83	1300	
29	1,25	50	121,86	400	1173,93	1300	
30	1,63	50	27,32	400	994,17	1300	
31	1,57	50	24,78	400	978,57	1300	
<b>Average</b>	<b>2</b>	<b>50</b>	<b>63</b>	<b>400</b>	<b>1068</b>	<b>1300</b>	

### Maximum Limit Value

Explanations: The monthly average values are calculated on the half hour emissin values. Measured values of the concentrations are calculated at 10 vol. of O<sub>2</sub>  
 Results of the measurments are represented in Nm3 (Nm3 - T=273K, P=101,3kP, dry gas)c