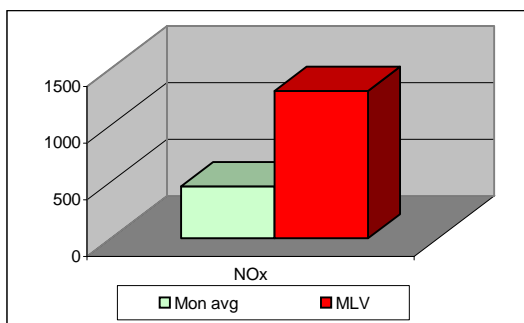
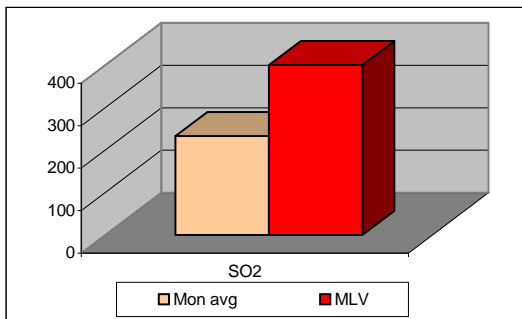
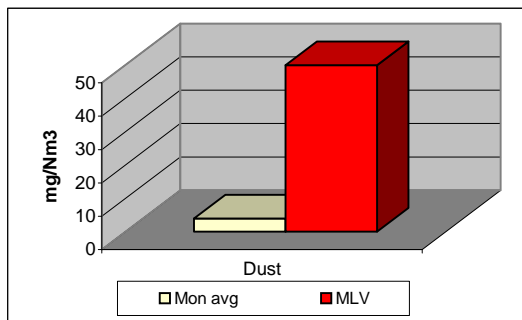


MONTHLY REPORT FROM EMISSION MONITORING IN TITAN CEMENTARNICA USJE

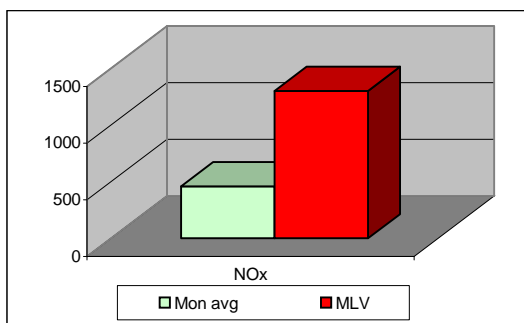
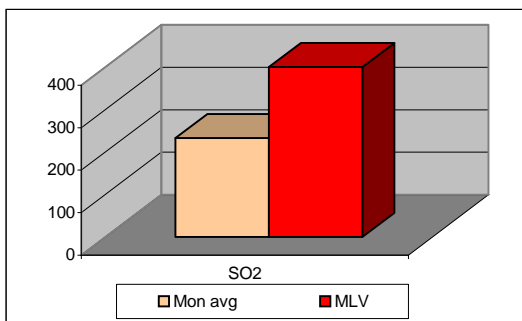
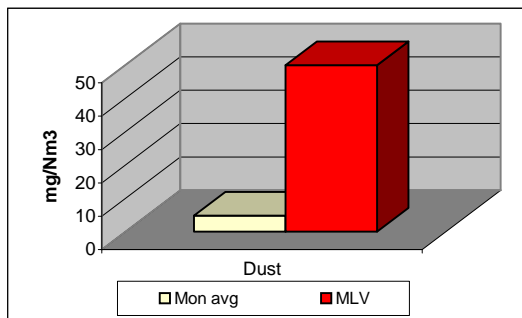


January 2008	Dust (mg/Nm ³) МДК 50mg/m ³	МДК 50mg/m ³	SO ₂ (mg/Nm ³) МДК 400mg/m ³	МДК 400mg/m ³	NOx (mg/Nm ³) МДК 1300mg/m ³	МДК 1300mg/m ³	Comments
1		50		400		1300	
2		50		400		1300	
3		50		400		1300	
4		50		400		1300	
5		50		400		1300	
6		50		400		1300	
7		50		400		1300	
8		50		400		1300	
9		50		400		1300	
10		50		400		1300	
11		50		400		1300	
12		50		400		1300	
13		50		400		1300	
14		50		400		1300	
15		50		400		1300	
16		50		400		1300	
17		50		400		1300	
18		50		400		1300	
19		50		400		1300	
20		50		400		1300	
21		50		400		1300	
22		50		400		1300	
23		50		400		1300	
24		50		400		1300	
25	5	50	358	400	21	1300	
26	4	50	259	400	390	1300	
27	4	50	169	400	691	1300	
28	3	50	145	400	737	1300	
29		50		400		1300	
30		50		400		1300	
31		50		400		1300	
Average	4	50	233	400	460	1300	

Maximum Limit Value

Explanations: The monthly average values are calculated on the half hour emission values. Measured values of the concentrations are calculated at 10 vol. of O₂. Results of the measurements are represented in Nm³ (Nm³ - T=273K, P=101,3kP, dry gas)

MONTHLY REPORT FROM EMISSION MONITORING IN TITAN CEMENTARNICA USJE



January 2008	Dust (mg/Nm ³) МДК 50mg/m ³	МДК 50mg/m ³	SO ₂ (mg/Nm ³) МДК 400mg/m ³	МДК 400mg/m ³	NOx (mg/Nm ³) МДК 1300mg/m ³	МДК 1300mg/m ³	Comments
1	5	50	300	400	125	1300	
2	3	50	268	400	118	1300	
3	4	50	215	400	142	1300	
4	5	50	239	400	291	1300	
5	5	50	262	400	251	1300	
6	5	50	219	400	242	1300	
7	4	50	140	400	221	1300	
8	4	50	144	400	130	1300	
9	4	50	115	400	153	1300	
10	4	50	132	400	168	1300	
11	4	50	136	400	140	1300	
12	5	50	170	400	118	1300	
13	6	50	152	400	365	1300	
14	5	50	93	400	340	1300	
15	5	50	79	400	396	1300	
16	6	50	146	400	408	1300	
17	6	50	206	400	323	1300	
18	5	50	200	400	273	1300	
19	7	50	267	400	264	1300	
20	7	50	263	400	249	1300	
21	5	50	239	400	171	1300	
22	4	50	215	400	231	1300	
23	4	50	178	400	157	1300	
24	6	50	170	400	273	1300	
25	5	50	159	400	255	1300	
26	6	50	144	400	225	1300	
27	4	50	122	400	219	1300	
28	4	50	122	400	247	1300	
29		50		400		1300	
30		50		400		1300	
31		50		400		1300	
Average	5	50	233	400	460	1300	

Maximum Limit Value

Explanations: The monthly average values are calculated on the half hour emission values. Measured values of the concentrations are calculated at 10 vol. of O₂. Results of the measurements are represented in Nm³ (Nm³ - T=273K, P=101,3kP, dry gas)