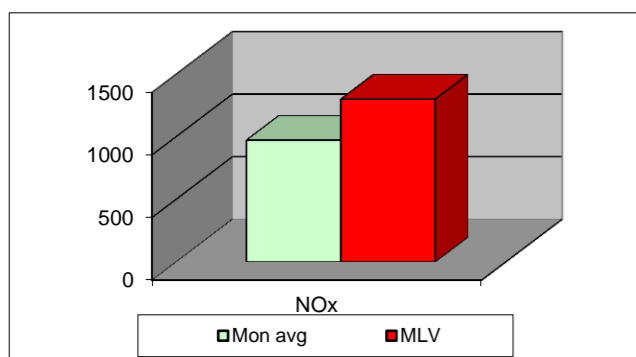
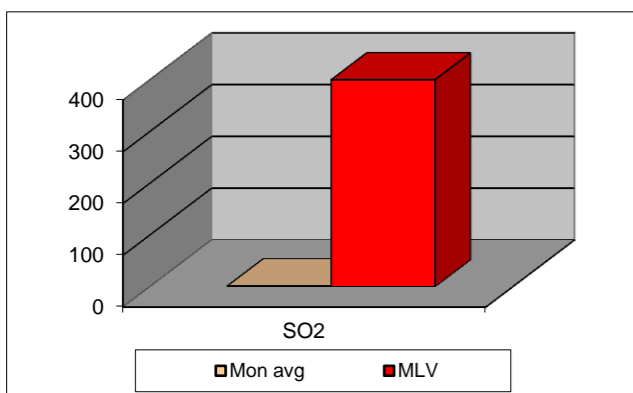
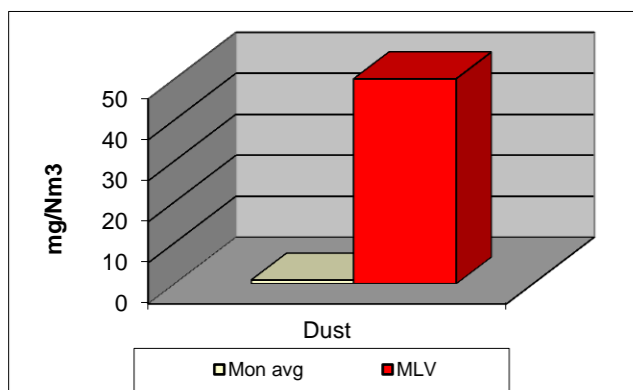


MONTHLY REPORT FROM EMISSION MONITORING IN TITAN CEMENTARNICA USJE - KILN No.3



June 2012	Dust (mg/Nm ³)	МДК 50mg/m ³	SO ₂	МДК 400mg/m ³	NOx	МДК 1300mg/m ³	Comments
	МДК 50mg/m ³		(mg/Nm ³)		МДК 400mg/m ³		
1	1,4	50	1,11	400	1059,72	1300	
2	1,28	50	0,8	400	922,78	1300	
3	1,16	50	5,93	400	927,18	1300	
4	1,31	50	3,07	400	976,01	1300	
5	1,4	50	0,41	400	882,9	1300	
6	1,44	50	0,72	400	799,76	1300	
7	1,47	50	4,15	400	937,38	1300	
8	1,18	50	1,37	400	765,65	1300	
9	1,12	50	0,77	400	919,51	1300	
10	1,22	50	4,27	400	935,04	1300	
11	2,01	50	3,22	400	875,18	1300	
12	0,83	50	4,09	400	965,5	1300	
13	0,3	50	0,89	400	939,72	1300	
14	0,54	50	0,8	400	1080,82	1300	
15	0,64	50	0,17	400	1123,57	1300	
16	0,52	50	0,16	400	1022,83	1300	
17	0,47	50	0,21	400	1051,85	1300	
18	0,47	50	1,25	400	983,71	1300	
19	0,46	50	1,08	400	1022,36	1300	
20	0,46	50	0,39	400	1062,47	1300	
21	1,16	50	0,19	400	1043,54	1300	
22	0,53	50	0,34	400	1006,95	1300	
23	0,8	50	0,68	400	1067,46	1300	
24	0,17	50	0,58	400	975,53	1300	
25	0,49	50	3,17	400	988,55	1300	
26		50		400		1300	
27		50		400		1300	
28		50		400		1300	
29		50		400		1300	
30		50		400		1300	
Average	1	50	2	400	973	1300	

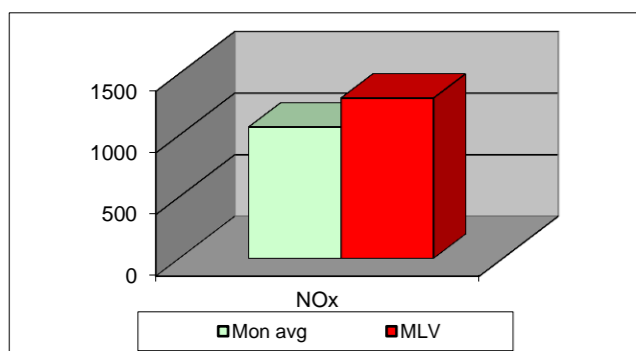
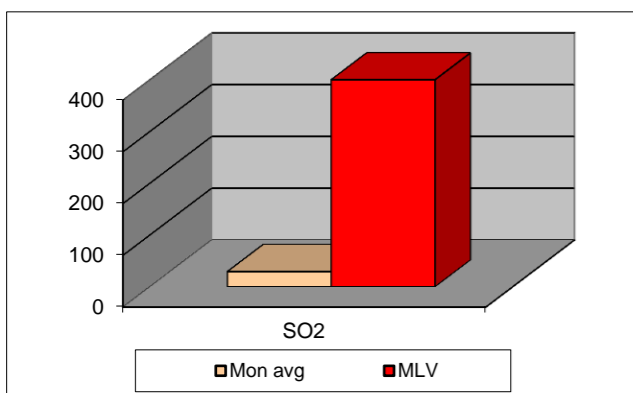
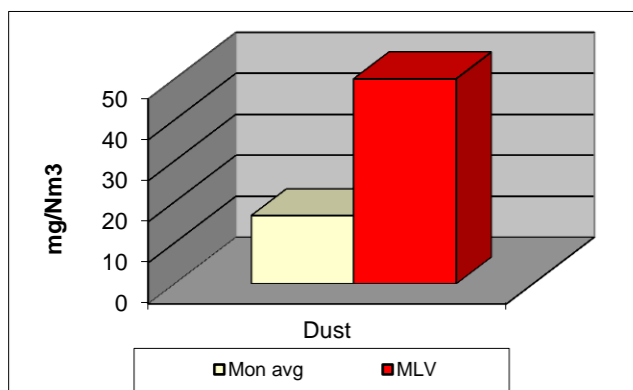
Maximum Limit Value

Погонот Подготовка-Печка 3 од 26.06.2012 не е во работа поради стратегиски причини (запазување на плановите за продажба и одржување на залихите)

Explanations: The monthly average values are calculated on the half hour emissin values. Measured values of the concentrations are calculated at 10 vol. of O₂

Results of the measurments are represented in Nm3 (Nm3 - T=273K, P=101,3kP, dry gas)c

MONTHLY REPORT FROM EMISSION MONITORING IN TITAN CEMENTARNICA USJE - KILN No.4



June 2012	Dust (mg/Nm ³)	MDK 50mg/m ³	SO ₂ (mg/Nm ³)	MDK 400mg/m ³	NOx (mg/Nm ³)	MDK 1300mg/m ³	Comments
	MDK 50mg/m ³		MDK 400mg/m ³		MDK 1300mg/m ³		
1	12,24	50	18,92	400	998,43	1300	
2	11,13	50	27,05	400	1046,45	1300	
3	9,73	50	30,77	400	861,87	1300	
4	14,03	50	22,39	400	1026,72	1300	
5	18,61	50	23,18	400	933,38	1300	
6	9,6	50	22,15	400	1033,31	1300	
7	6,69	50	30,56	400	979,3	1300	
8	10,09	50	30,23	400	1039,93	1300	
9	11,71	50	32,17	400	1018,65	1300	
10	12,37	50	35,71	400	1105,75	1300	
11	10,4	50	40,8	400	1105,24	1300	
12	12,04	50	38,87	400	1130,05	1300	
13	13,36	50	26,68	400	1030,3	1300	
14	10,75	50	25,24	400	994,74	1300	
15	14,24	50	28,7	400	1176,95	1300	
16	14,06	50	31,54	400	1076,18	1300	
17	15,14	50	28,77	400	1119,31	1300	
18	15,24	50	29,66	400	1054,37	1300	
19	16,35	50	30,7	400	1097,14	1300	
20	18,08	50	28,75	400	1080,64	1300	
21	19,68	50	21,72	400	1052,08	1300	
22	21,81	50	26,77	400	1078,79	1300	
23	22,8	50	37,36	400	1154,73	1300	
24	22,22	50	33,76	400	1076,1	1300	
25	22,78	50	32,96	400	1116,94	1300	
26	25,25	50	31,64	400	1140,65	1300	
27	24,06	50	29,24	400	1113,57	1300	
28	25,44	50	28,54	400	1192,6	1300	
29	27,16	50	25,3	400	984,28	1300	
30	31,61	50	31,29	400	1110,97	1300	
Average	17	50	29	400	1064	1300	

Maximum Limit Value

Explanations: The monthly average values are calculated on the half hour emission values. Measured values of the concentrations are calculated at 10 vol. of O₂. Results of the measurements are represented in Nm³ (Nm³ - T=273K, P=101,3kP, dry gas)c