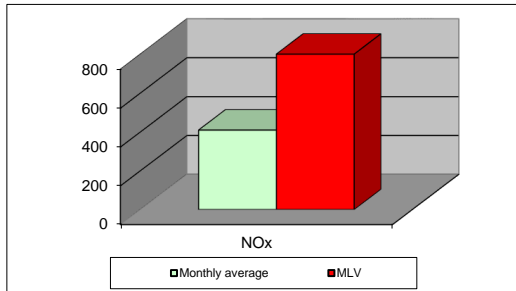
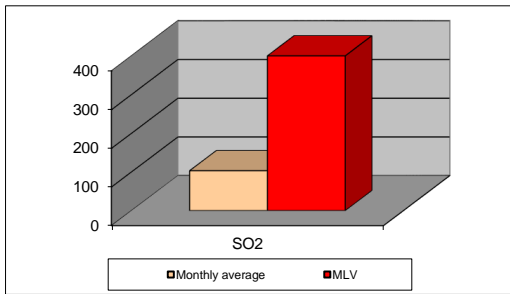
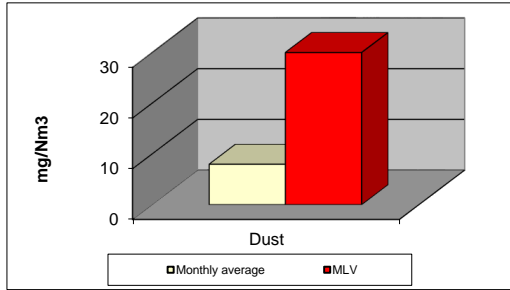


MONTHLY REPORT FROM EMISSION MONITORING IN TITAN CEMENTARNICA USJE - KILN No.3



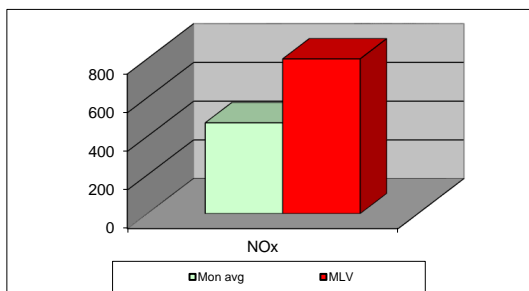
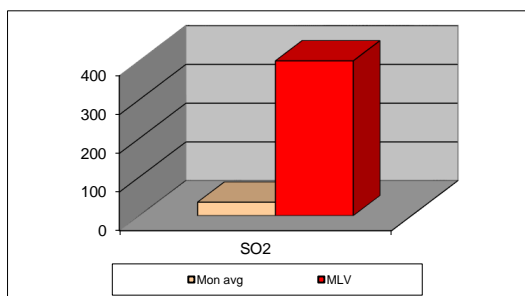
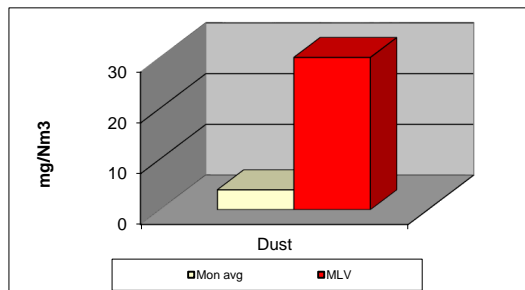
jan.24	Dust (mg/Nm ³) МДК 30mg/m ³	МДК 30mg/m ³	SO ₂ (mg/Nm ³) МДК 400mg/m ³	МДК 400mg/m ³	NOx (mg/Nm ³) МДК 800mg/m ³	МДК 800mg/m ³	Comments
01.01.2024	7,97	30	103,26	400	409,78	800	
02.01.2024		30		400		800	
03.01.2024		30		400		800	
04.01.2024		30		400		800	
05.01.2024		30		400		800	
06.01.2024		30		400		800	
07.01.2024		30		400		800	
08.01.2024		30		400		800	
09.01.2024		30		400		800	
10.01.2024		30		400		800	
11.01.2024		30		400		800	
12.01.2024		30		400		800	
13.01.2024		30		400		800	
14.01.2024		30		400		800	
15.01.2024		30		400		800	
16.01.2024		30		400		800	
17.01.2024		30		400		800	
18.01.2024		30		400		800	
19.01.2024		30		400		800	
20.01.2024		30		400		800	
21.01.2024		30		400		800	
22.01.2024		30		400		800	
23.01.2024		30		400		800	
24.01.2024		30		400		800	
25.01.2024		30		400		800	
26.01.2024		30		400		800	
27.01.2024		30		400		800	
28.01.2024		30		400		800	
29.02.2024		30		400		800	
30.01.2024		30		400		800	
31.01.2024		30		400		800	
Average	7,97	30	103,26	400	409,78	800	

MLV: Maximum Limit Value

Explanations: The monthly average values are calculated on the half hour emissin values. Measured values of the concentrations are calculated at 10 vol. of O₂
 Results of the measurments are represented in Nm3 (Nm3 - T=273K, P=101,3kP, dry gas)

Note: Due to annual maintenance, Kiln 3 is stoped on 01.01.2024

MONTHLY REPORT FROM EMISSION MONITORING IN TITAN CEMENTARNICA USJE - KILN No.4



jan.24	Dust (mg/Nm ³) МДК 30mg/m ³	МДК 30mg/m ³	SO ₂ (mg/Nm ³) МДК 400mg/m ³	МДК 400mg/m ³	NO _x (mg/Nm ³) МДК 800mg/m ³	МДК 800mg/m ³	Comments
01.01.2024	4,71	30	94,19	400	444,44	800	
02.01.2024	6,14	30	102,75	400	491,39	800	
03.01.2024	4,24	30	85,09	400	485,98	800	
04.01.2024	3,93	30	53,25	400	486,88	800	
05.01.2024	3,8	30	41,45	400	421,29	800	
06.01.2024	4,36	30	64,06	400	476,98	800	
07.01.2024	3,42	30	20,98	400	480,97	800	
08.01.2024	3,5	30	20,18	400	555,45	800	
09.01.2024	3,85	30	8,21	400	572,23	800	
10.01.2024	3,7	30	32,51	400	499,03	800	
11.01.2024	3,5	30	16,16	400	487,76	800	
12.01.2024	3,41	30	13,71	400	428,51	800	
13.01.2024	3,62	30	4,21	400	450,39	800	
14.01.2024	3,54	30	5,77	400	455,05	800	
15.01.2024	3,95	30	8,58	400	407,73	800	
16.01.2024	3,5	30	8,82	400	456,38	800	
17.01.2024	3,37	30	7,78	400	357,15	800	
18.01.2024		30		400		800	
19.01.2024		30		400		800	
20.01.2024		30		400		800	
21.01.2024		30		400		800	
22.01.2024		30		400		800	
23.01.2024		30		400		800	
24.01.2024		30		400		800	
25.01.2024		30		400		800	
26.01.2024		30		400		800	
27.01.2024		30		400		800	
28.01.2024		30		400		800	
29.02.2024		30		400		800	
30.01.2024		30		400		800	
31.01.2024		30		400		800	
Average	3,92	30	34,88	400	470,32	800	

MLV: Maximum Limit Value

Explanations: The monthly average values are calculated on the half hour emissin values. Measured values of the concentrations are calculated at 10 vol. of O2
Results of the measurments are represented in Nm3 (Nm3 - T=273K, P=101,3kP, dry gas)

Note: Due to annual maintenance, Kiln 4 is stoped on 17.01.2024