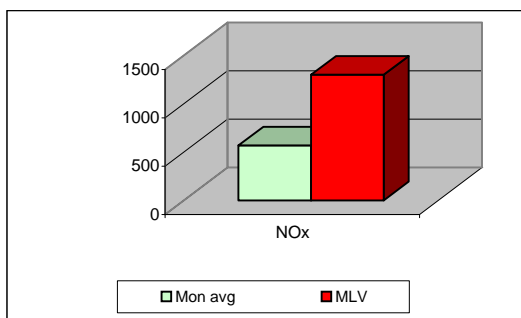
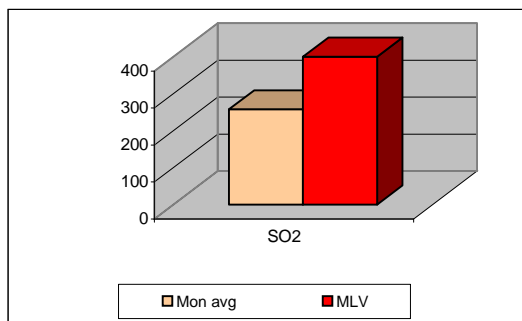
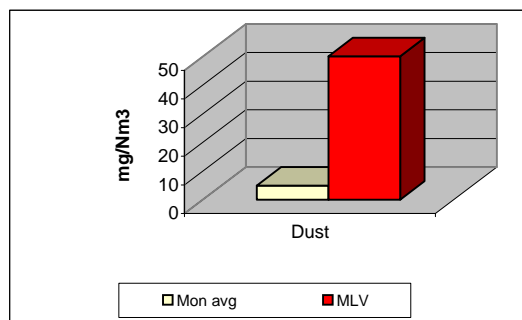


MONTHLY REPORT FROM EMISSION MONITORING IN TITAN CEMENTARNICA USJE - KILN No.4



February 2010	Dust (mg/Nm ³) МДК 50mg/m ³	МДК 50mg/m ³	SO ₂ (mg/Nm ³) МДК 400mg/m ³	МДК 400mg/m ³	NOx (mg/Nm ³) МДК 1300mg/m ³	МДК 1300mg/m ³	Comments
1	6	50	240	400	442	1300	
2	7	50	253	400	526	1300	
3	6	50	186	400	529	1300	
4	6	50	192	400	504	1300	
5	6	50	245	400	394	1300	
6	5	50	231	400	507	1300	
7	7	50	270	400	606	1300	
8	7	50	208	400	665	1300	
9	6	50	304	400	668	1300	
10	6	50	287	400	627	1300	
11	5	50	323	400	627	1300	
12	4	50	288	400	543	1300	
13	5	50	312	400	560	1300	
14	3	50	239	400	480	1300	
15	4	50	270	400	605	1300	
16	4	50	270	400	668	1300	
17	4	50	263	400	479	1300	
18	4	50	266	400	439	1300	
19	4	50	231	400	433	1300	
20	4	50	243	400	414	1300	
21	4	50	243	400	519	1300	
22	4	50	198	400	605	1300	
23	4	50	258	400	618	1300	
24	4	50	246	400	562	1300	
25	4	50	237	400	663	1300	
26	4	50	285	400	678	1300	
27	5	50	314	400	778	1300	
28	3	50	312	400	772	1300	
29		50		400		1300	
30		50		400		1300	
31		50		400		1300	
Average	5	50	258	400	568	1300	

MLV: Maximum Limit Value

Explanations: The monthly average values are calculated on the half hour emissin values. Measured values of the concentrations are calculated at 10 vol. of O₂
Results of the measurements are represented in Nm3 (Nm3 - T=273K, P=101,3kP, dry gasses)c