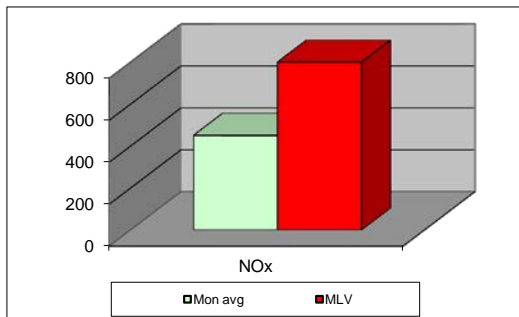
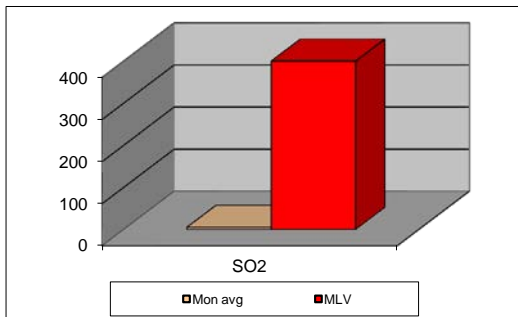
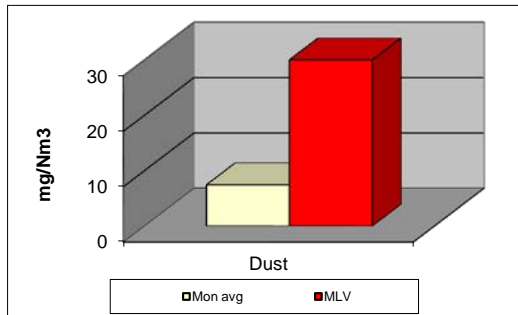


MONTHLY REPORT FROM EMISSION MONITORING IN TITAN CEMENTARNICA USJE - KILN No.3



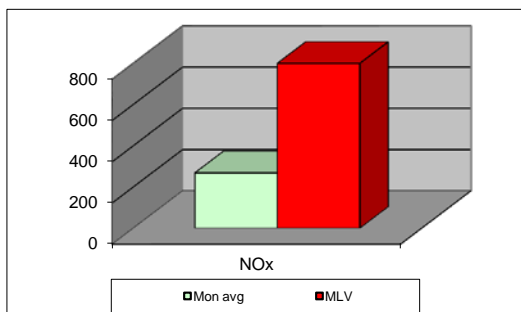
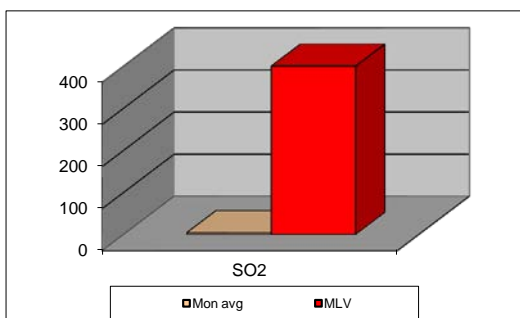
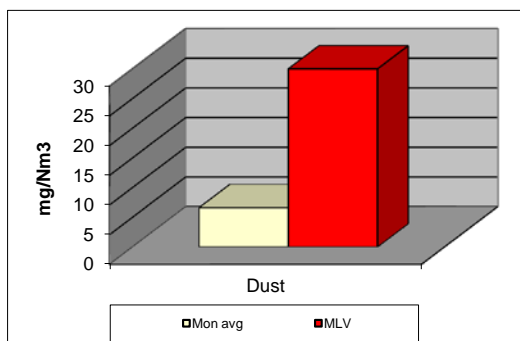
October 2017	Dust (mg/Nm ³) МДК 30mg/m ³	МДК 30mg/m ³	SO ₂ (mg/Nm ³) МДК 400mg/m ³	МДК 400mg/m ³	NO _x (mg/Nm ³) МДК 800mg/m ³	МДК 800mg/m ³	Comments
01.10.2017	8,07	30	4,94	400	274,01	800	
02.10.2017	7,6	30	3,35	400	299,43	800	
03.10.2017	7,41	30	4,04	400	332,6	800	
04.10.2017	7,68	30	2,97	400	403,88	800	
05.10.2017	7,59	30	3,12	400	406,16	800	
06.10.2017	7,87	30	4,99	400	479,78	800	
07.10.2017	7,86	30	3,91	400	461,96	800	
08.10.2017	7,84	30	2,29	400	501,21	800	
09.10.2017	7,65	30	4,19	400	450,02	800	
10.10.2017	7,68	30	2,9	400	497,11	800	
11.10.2017	8,15	30	2,51	400	522,72	800	
12.10.2017	8,79	30	3,62	400	548,7	800	
13.10.2017	7,94	30	3,8	400	529,36	800	
14.10.2017	8,12	30	2,63	400	427,18	800	
15.10.2017	8,7	30	2,31	400	466,97	800	
16.10.2017	8,85	30	2,63	400	477,98	800	
17.10.2017	8,63	30	2,67	400	476,57	800	
18.10.2017	8,9	30	4,86	400	442,43	800	
19.10.2017	9	30	5,22	400	432,73	800	
20.10.2017	9,25	30	4,56	400	521,82	800	
21.10.2017	8,81	30	6,43	400	396,83	800	
22.10.2017	8,94	30	13,45	400	415,73	800	
23.10.2017	8,08	30	3,65	400	424,15	800	
24.10.2017	8,22	30	3,31	400	533,91	800	
25.10.2017	8,12	30	5,54	400	551,92	800	
26.10.2017	8,02	30	4,32	400	558,95	800	
27.10.2017	5,41	30	8,06	400	366,19	800	
28.10.2017	2,5	30	7,14	400	426,47	800	
29.10.2017	2,6	30	8,74	400	489,61	800	
30.10.2017	2,73	30	5,63	400	361,12	800	
31.10.2017	3,59	30	9,23	400	491,25	800	
Average	7,4	30	4,7	400	450,6	800	

MLV: Maximum Limit Value

Explanations: The monthly average values are calculated on the half hour emissin values. Measured values of the concentrations are calculated at 10 vol. of O2
Results of the measurments are represented in Nm3 (Nm3 - T=273K, P=101,3kP, dry gas)

Note:

MONTHLY REPORT FROM EMISSION MONITORING IN TITAN CEMENTARNICA USJE - KILN No.4



October 2017	Dust (mg/Nm ³) МДК 30mg/m ³	МДК 30mg/m ³	SO ₂ (mg/Nm ³) МДК 400mg/m ³	МДК 400mg/m ³	NOx (mg/Nm ³) МДК 800mg/m ³	МДК 800mg/m ³	Comments
01.10.2017	6,31	30	0,18	400	302,09	800	
02.10.2017	6,19	30	0,18	400	321,18	800	
03.10.2017	5,99	30	0,31	400	259,48	800	
04.10.2017	6,27	30	0,3	400	240,37	800	
05.10.2017	7,7	30	0,11	400	280,54	800	
06.10.2017	7,23	30	0,59	400	259,57	800	
07.10.2017	7,59	30	0,21	400	201,76	800	
08.10.2017		30		400		800	
09.10.2017		30		400		800	
10.10.2017	6,62	30	0,83	400	237,16	800	
11.10.2017	5,92	30	6,3	400	236,09	800	
12.10.2017	6,44	30	1,37	400	221,69	800	
13.10.2017	6,52	30	0,29	400	313,27	800	
14.10.2017	5,94	30	1,42	400	272,84	800	
15.10.2017	6,23	30	0,89	400	282,68	800	
16.10.2017	6,76	30	1,79	400	242,02	800	
17.10.2017	6,48	30	4,14	400	325,07	800	
18.10.2017	10	30	12,35	400	269,54	800	
19.10.2017	7,19	30	21,31	400	245,61	800	
20.10.2017	6,3	30	14,28	400	229,2	800	
21.10.2017	6,21	30	5,91	400	273,16	800	
22.10.2017	6,05	30	6,18	400	249,13	800	
23.10.2017	5,72	30	12,62	400	176,03	800	
24.10.2017	6,29	30	3,21	400	186,59	800	
25.10.2017	6,76	30	0,15	400	269,29	800	
26.10.2017	6,82	30	3,16	400	238,6	800	
27.10.2017	6,39	30	11,85	400	283,35	800	
28.10.2017	6,38	30	0,39	400	320,79	800	
29.10.2017	6,44	30	1,07	400	336,08	800	
30.10.2017	6,68	30	1,43	400	383,29	800	
31.10.2017	6,5	30	5,9	400	332,82	800	
Average	6,62	30	4,09	400	268,60	800	

MLV: Maximum Limit Value

Explanations: The monthly average values are calculated on the half hour emission values. Measured values of the concentrations are calculated at 10 vol. of O₂. Results of the measurements are represented in Nm³ (Nm³ - T=273K, P=101,3kP, dry gas)

Note: Due to technical problems, Kiln 4 for clinker production was out of operation from 07.10.2017 until 10.10.2017.