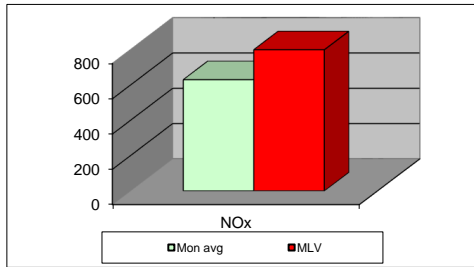
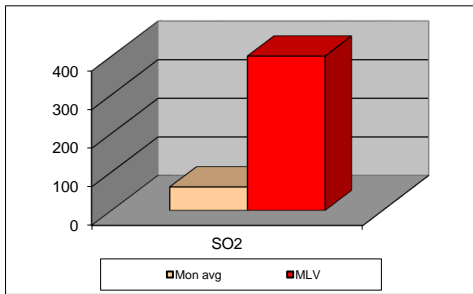
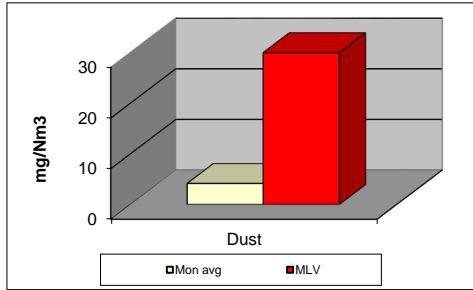


### MONTHLY REPORT FROM EMISSION MONITORING IN TITAN CEMENTARNICA USJE - KILN No.3



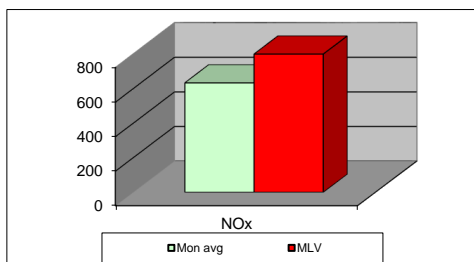
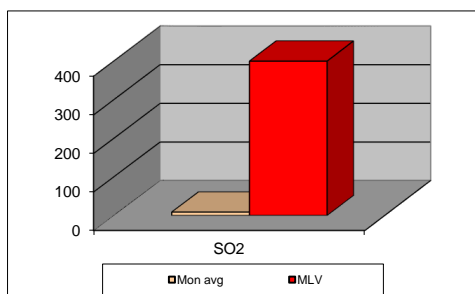
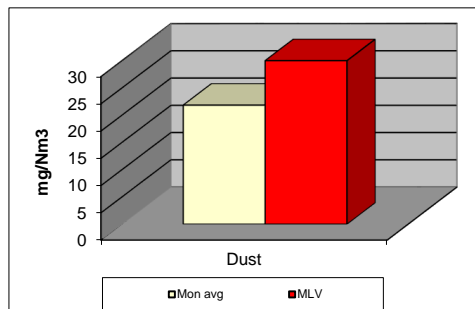
noe.22	Dust (mg/Nm <sup>3</sup> ) МДК 30mg/m <sup>3</sup>	МДК 30mg/m <sup>3</sup>	SO <sub>2</sub> (mg/Nm <sup>3</sup> ) МДК 400mg/m <sup>3</sup>	МДК 400mg/m <sup>3</sup>	NOx (mg/Nm <sup>3</sup> ) МДК 800mg/m <sup>3</sup>	МДК 800mg/m <sup>3</sup>	Comments
01.11.2022	3,51	30	29,78	400	601,04	800	
02.11.2022	3,36	30	28,18	400	538,08	800	
03.11.2022	3,3	30	41,98	400	521,19	800	
04.11.2022	3,12	30	25,88	400	592,74	800	
05.11.2022	3,14	30	16,14	400	719,36	800	
06.11.2022	3,24	30	43,59	400	679,08	800	
07.11.2022	3,11	30	34,12	400	712	800	
08.11.2022	4,09	30	32,57	400	672,34	800	
09.11.2022	4,46	30	37,28	400	555,31	800	
10.11.2022	4,33	30	36,67	400	664,66	800	
11.11.2022	4,49	30	63,39	400	699,3	800	
12.11.2022	4	30	81,29	400	684,62	800	
13.11.2022	4,26	30	59,48	400	676,42	800	
14.11.2022	4,37	30	52,76	400	643,07	800	
15.11.2022	4,2	30	82,41	400	582,08	800	
16.11.2022	4,27	30	92,37	400	482,86	800	
17.11.2022	4,34	30	108,41	400	532,52	800	
18.11.2022	4,55	30	44,59	400	719,48	800	
19.11.2022	4,72	30	62,63	400	690,87	800	
20.11.2022	4,67	30	53,43	400	683,45	800	
21.11.2022	4,59	30	36,17	400	618,75	800	
22.11.2022	4,53	30	71,99	400	632,64	800	
23.11.2022	4,54	30	87,99	400	604,4	800	
24.11.2022	4,46	30	70,75	400	527,74	800	
25.11.2022	4,28	30	88,94	400	545,82	800	
26.11.2022	4,4	30	82,1	400	663,27	800	
27.11.2022	3,28	30	78,79	400	682,07	800	
28.11.2022	3,53	30	81,34	400	668,46	800	
29.11.2022	3,51	30	112,37	400	704,43	800	
30.11.2022	5,18	30	91,04	400	646,23	800	
<b>Average</b>	<b>4,2</b>	<b>30</b>	<b>61,1</b>	<b>400</b>	<b>630,1</b>	<b>800</b>	

**MLV: Maximum Limit Value**

Explanations: The monthly average values are calculated on the half hour emissin values. Measured values of the concentrations are calculated at 10 vol. of O2  
Results of the measurments are represented in Nm3 (Nm3 - T=273K, P=101,3kP, dry gas)c

**Note:**

## MONTHLY REPORT FROM EMISSION MONITORING IN TITAN CEMENTARNICA USJE - KILN No.4



ноє.22	Dust (mg/Nm <sup>3</sup> ) МДК 30mg/m <sup>3</sup>	МДК 30mg/m <sup>3</sup>	SO <sub>2</sub> (mg/Nm <sup>3</sup> ) МДК 400mg/m <sup>3</sup>	МДК 400mg/m <sup>3</sup>	NOx (mg/Nm <sup>3</sup> ) МДК 800mg/m <sup>3</sup>	МДК 800mg/m <sup>3</sup>	Comments
01.11.2022	19,19	30	5,29	400	660,45	800	
02.11.2022	19,78	30	7,47	400	644,27	800	
03.11.2022	20,12	30	7,3	400	643,79	800	
04.11.2022	20,3	30	6,78	400	600,62	800	
05.11.2022	20,01	30	6,32	400	596,66	800	
06.11.2022	18,74	30	6,99	400	557,58	800	
07.11.2022	20,63	30	7,39	400	641,21	800	
08.11.2022	18,67	30	9,38	400	604,08	800	
09.11.2022	20,45	30	25,45	400	578,93	800	
10.11.2022	21,2	30	19,07	400	588,3	800	
11.11.2022	18,77	30	9,76	400	715,99	800	
12.11.2022	20,97	30	10,57	400	667,22	800	
13.11.2022	21,42	30	13,05	400	528,98	800	
14.11.2022	22,4	30	8,92	400	672,7	800	
15.11.2022	22,3	30	6,56	400	670,48	800	
16.11.2022	23,22	30	7,32	400	586,69	800	
17.11.2022	22,5	30	8,82	400	507,5	800	
18.11.2022	22,13	30	7,58	400	638,81	800	
19.11.2022	21,96	30	6,57	400	610,31	800	
20.11.2022	21,16	30	8,38	400	514,47	800	
21.11.2022	22,78	30	9,29	400	605,42	800	
22.11.2022	23,29	30	7,53	400	646,68	800	
23.11.2022	25,4	30	7,79	400	673,29	800	
24.11.2022	25,43	30	6,91	400	773,13	800	
25.11.2022	22,85	30	9,92	400	628,77	800	
26.11.2022	23,13	30	8,15	400	649,51	800	
27.11.2022	23,6	30	7,5	400	697,7	800	
28.11.2022	24,19	30	7,08	400	746,53	800	
29.11.2022	25,06	30	7,55	400	753,61	800	
30.11.2022	26,27	30	7,78	400	628,4	800	
<b>Average</b>	<b>21,8</b>	<b>30</b>	<b>8,9</b>	<b>400</b>	<b>633,9</b>	<b>800</b>	

**MLV: Maximum Limit Value**

Explanations: The monthly average values are calculated on the half hour emissin values. Measured values of the concentrations are calculated at 10 vol. of O2  
Results of the measurments are represented in Nm3 (Nm3 - T=273K, P=101,3kP, dry gas)

**Note:**