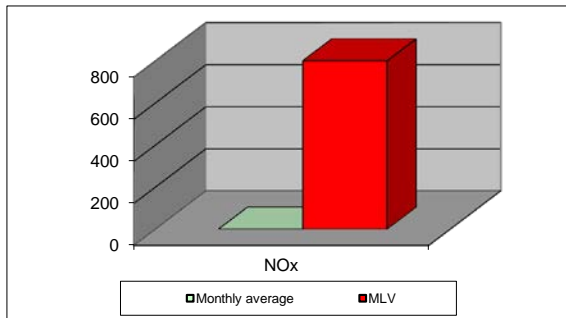
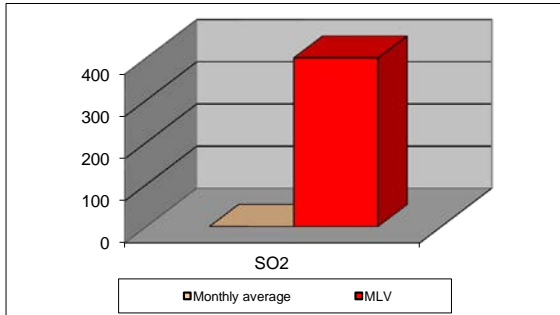
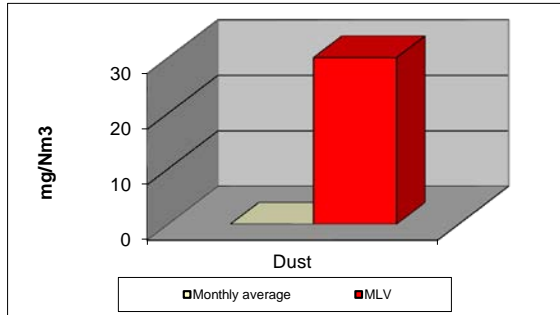


MONTHLY REPORT FROM EMISSION MONITORING IN TITAN CEMENTARNICA USJE - KILN No.3



January 2017	Dust (mg/Nm ³) МДК 30mg/m ³	МДК 30mg/m ³	SO ₂ (mg/Nm ³) МДК 400mg/m ³	МДК 400mg/m ³	NOx (mg/Nm ³) МДК 800mg/m ³	МДК 800mg/m ³	Comments
01.01.2017		30		400		800	
02.01.2017		30		400		800	
03.01.2017		30		400		800	
04.01.2017		30		400		800	
05.01.2017		30		400		800	
06.01.2017		30		400		800	
07.01.2017		30		400		800	
08.01.2017		30		400		800	
09.01.2017		30		400		800	
10.01.2017		30		400		800	
11.01.2017		30		400		800	
12.01.2017		30		400		800	
13.01.2017		30		400		800	
14.01.2017		30		400		800	
15.01.2017		30		400		800	
16.01.2017		30		400		800	
17.01.2017		30		400		800	
18.01.2017		30		400		800	
19.01.2017		30		400		800	
20.01.2017		30		400		800	
21.01.2017		30		400		800	
22.01.2017		30		400		800	
23.01.2017		30		400		800	
24.01.2017		30		400		800	
25.01.2017		30		400		800	
26.01.2017		30		400		800	
27.01.2017		30		400		800	
28.01.2017		30		400		800	
29.01.2017		30		400		800	
30.01.2017		30		400		800	
31.01.2017		30		400		800	
Average		30		400		800	

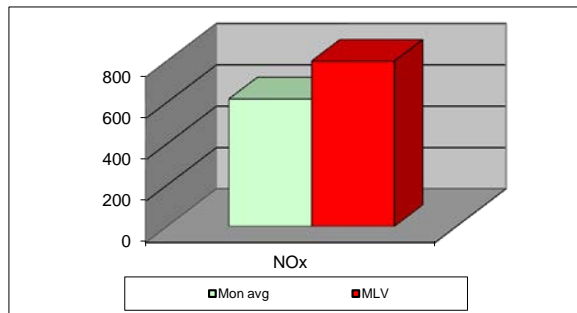
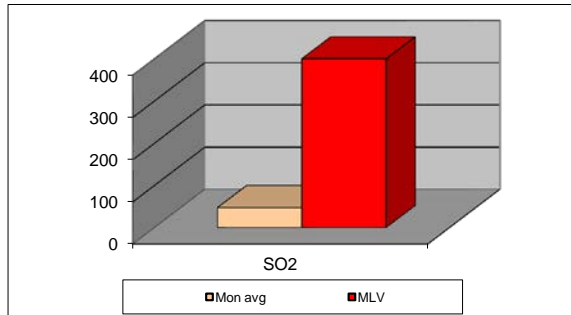
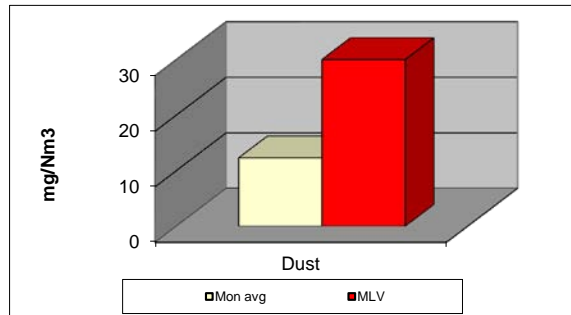
MLV: Maximum Limit Value

Explanations: The monthly average values are calculated on the half hour emissin values. Measured values of the concentrations are calculated at 10 vol. of O₂

Results of the measurments are represented in Nm3 (Nm3 - T=273K, P=101,3kP, dry gas)

Note: Kiln no.3 was stoped due to regular maintenance on 01.01.2017

MONTHLY REPORT FROM EMISSION MONITORING IN TITAN CEMENTARNICA USJE - KILN No.4



January 2017	Dust (mg/Nm ³) МДК 30mg/m ³	МДК 30mg/m ³	SO ₂ (mg/Nm ³) МДК 400mg/m ³	МДК 400mg/m ³	NO _x (mg/Nm ³) МДК 800mg/m ³	МДК 800mg/m ³	Comments
01.01.2017	10,81	30	0	400	607,26	800	
02.01.2017	9,43	30	0,18	400	599,92	800	
03.01.2017	10,6	30	0	400	644,17	800	
04.01.2017	10,64	30	0	400	683,5	800	
05.01.2017	12,79	30	0,01	400	673,06	800	
06.01.2017	10,33	30	0	400	679,72	800	
07.01.2017	10,16	30	15,15	400	651,65	800	
08.01.2017	13,4	30	6,44	400	659,81	800	
09.01.2017	12,8	30	8,39	400	662,67	800	
10.01.2017	13,03	30	7,38	400	714,16	800	
11.01.2017	14,03	30	16,05	400	634,6	800	
12.01.2017	15,78	30	51,93	400	686,36	800	
13.01.2017	18,09	30	36,84	400	544,24	800	
14.01.2017	13,22	30	66,46	400	709,77	800	
15.01.2017	11,71	30	4,32	400	691,3	800	
16.01.2017	11,7	30	0,49	400	669,05	800	
17.01.2017	12,38	30	101,27	400	651,21	800	
18.01.2017	11,75	30	204,42	400	567,99	800	
19.01.2017	12,14	30	274,19	400	491,84	800	
20.01.2017	12,31	30	152,88	400	544,14	800	
21.01.2017	14,13	30	200,38	400	603,81	800	
22.01.2017	13,01	30	123,51	400	579,72	800	
23.01.2017	12,53	30	96,49	400	583,4	800	
24.01.2017	12,24	30	3,53	400	547,74	800	
25.01.2017	11,24	30	0,53	400	565,27	800	
26.01.2017	11,03	30	0,6	400	548,7	800	
27.01.2017	11,18	30	4,08	400	557,94	800	
28.01.2017	12	30	0	400	566,6	800	
29.01.2017	12,02	30	0	400	558,97	800	
		30		400		800	
		30		400		800	
Average	12,29	30	47,43	400	616,50	800	

MLV: Maximum Limit Value

Explanations: The monthly average values are calculated on the half hour emissin values. Measured values of the concentrations are calculated at 10 vol. of O2

Results of the measurments are represented in Nm3 (Nm3 - T=273K, P=101,3kP, dry gas)

Note: Due to regular maintenance, kiln no.4 is shut down on 30.01.2017.