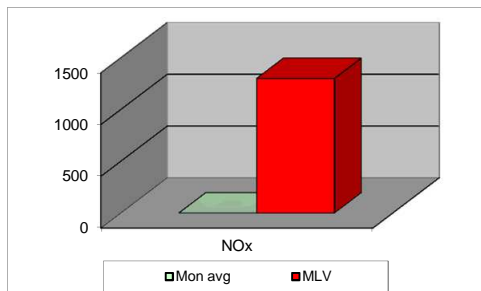
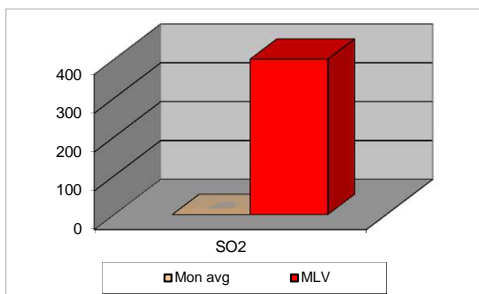
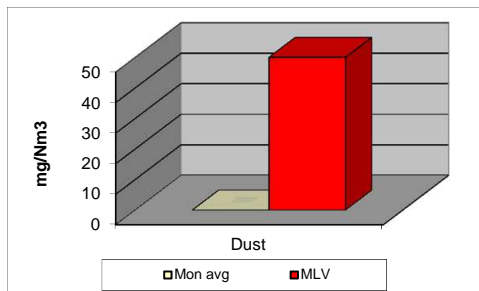


MONTHLY REPORT FROM EMISSION MONITORING IN TITAN CEMENTARNICA USJE - KILN No.3



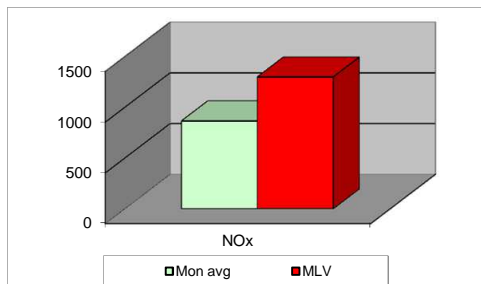
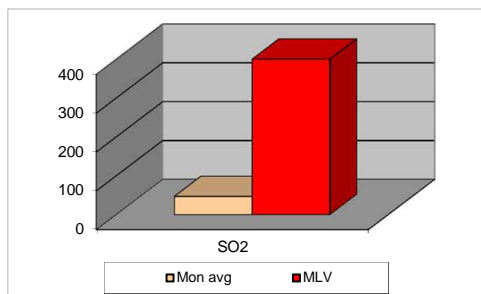
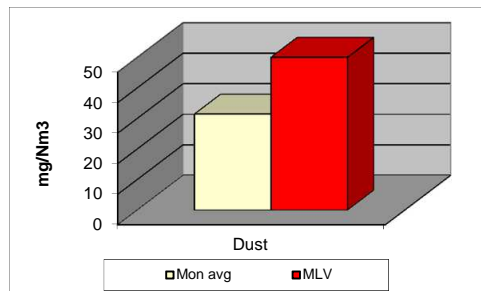
December 2011	Dust (mg/Nm ³) МДК 50mg/m ³	МДК 50mg/m ³	SO ₂ (mg/Nm ³) МДК 400mg/m ³	МДК 400mg/m ³	NOx (mg/Nm ³) МДК 1300mg/m ³	МДК 1300mg/m ³	Comments
1		50		400		1300	
2		50		400		1300	
3		50		400		1300	
4		50		400		1300	
5		50		400		1300	
6		50		400		1300	
7		50		400		1300	
8		50		400		1300	
9		50		400		1300	
10		50		400		1300	
11		50		400		1300	
12		50		400		1300	
13		50		400		1300	
14		50		400		1300	
15		50		400		1300	
16		50		400		1300	
17		50		400		1300	
18		50		400		1300	
19		50		400		1300	
20		50		400		1300	
21		50		400		1300	
22		50		400		1300	
23		50		400		1300	
24		50		400		1300	
25		50		400		1300	
26		50		400		1300	
27		50		400		1300	
28		50		400		1300	
29		50		400		1300	
30		50		400		1300	
31		50		400		1300	
Average		50		400		1300	

MLV: Maximum Limit Value

Kiln no.3 is not in operation since 17.10.2011 because of strategic reasons

Eplanations: The monthly average values are calculated on the half hour emissin values. Measured values of the concentrations are calculated at 10 vol. of O₂
 Results of the measurments are represented in Nm3 (Nm3 - T=273K, P=101,3kP, dry gas)c

MONTHLY REPORT FROM EMISSION MONITORING IN TITAN CEMENTARNICA USJE - KILN No.4



December 2011	Dust (mg/Nm ³)	МДК 50mg/m ³	SO ₂ (mg/Nm ³)	МДК 400mg/m ³	NOx (mg/Nm ³)	МДК 1300mg/m ³	Comments
	МДК 50mg/m ³		МДК 400mg/m ³		МДК 1300mg/m ³		
1	25,07	50	43,92	400	941,91	1300	
2	26,62	50	37,43	400	1069,73	1300	
3	27,05	50	36,71	400	1052,26	1300	
4	28,18	50	35,51	400	1053,37	1300	
5	29,03	50	31,85	400	924,59	1300	
6	27,92	50	29,3	400	871,55	1300	
7	28,33	50	27,58	400	770,12	1300	
8	27,13	50	25,81	400	709,69	1300	
9	26,98	50	44,07	400	685,17	1300	
10	30,13	50	38,59	400	872,65	1300	
11	30,07	50	43,62	400	823,72	1300	
12	30,32	50	45,28	400	711,03	1300	
13	30,59	50	37,8	400	690,06	1300	
14	31,58	50	45,93	400	797,92	1300	
15	33,34	50	51,82	400	882,96	1300	
16	31,34	50	47,57	400	757,34	1300	
17	31,15	50	54,69	400	644,21	1300	
18	33,45	50	63,51	400	875,58	1300	
19	34,82	50	60,56	400	832,58	1300	
20	33,75	50	47,59	400	698,62	1300	
21	34,43	50	64,86	400	816,26	1300	
22	37,71	50	69,85	400	980,26	1300	
23	38,4	50	66,44	400	1042,14	1300	
24	36,34	50	53,74	400	945,97	1300	
25	37,07	50	61,89	400	1026,12	1300	
26	36,21	50	51,91	400	1058,67	1300	
27		50		400		1300	
28		50		400		1300	
29		50		400		1300	
30		50		400		1300	
31		50		400		1300	
Average	31	50	47	400	867	1300	

MLV: Maximum Limit Value

Kiln no.4 is not in operation since 27.12.2011 because of strategic reasons

Eplanations: The monthly average values are calculated on the half hour emissin values. Measured values of the concentrations are calculated at 10 vol. of O₂
 Results of the measurments are represented in Nm3 (Nm3 - T=273K, P=101,3kP, dry gas)c