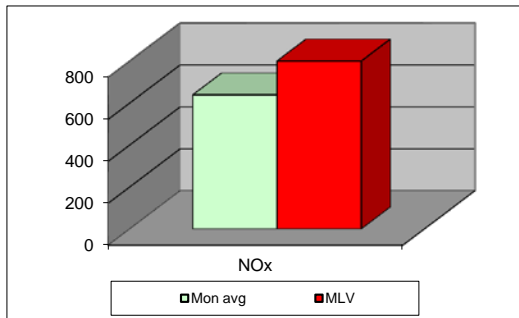
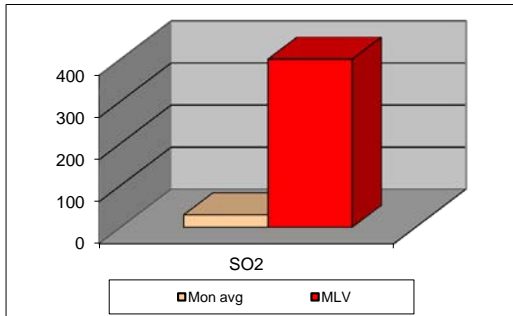
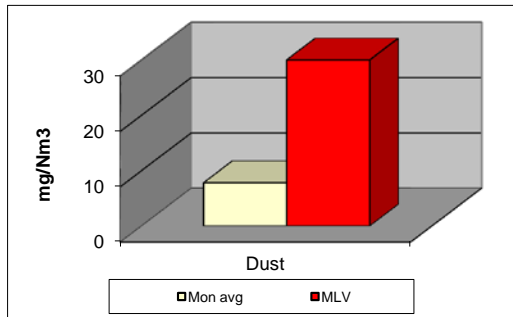


## MONTHLY REPORT FROM EMISSION MONITORING IN TITAN CEMENTARNICA USJE - KILN No.3

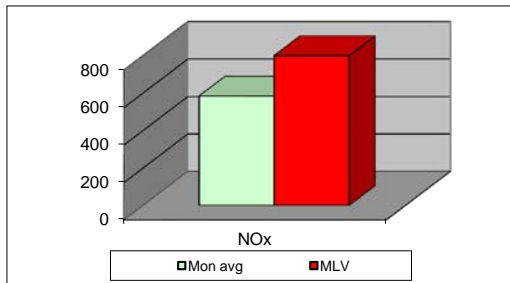
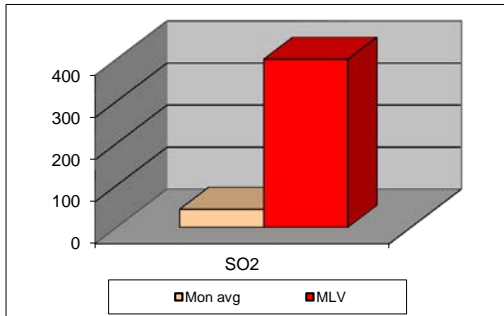
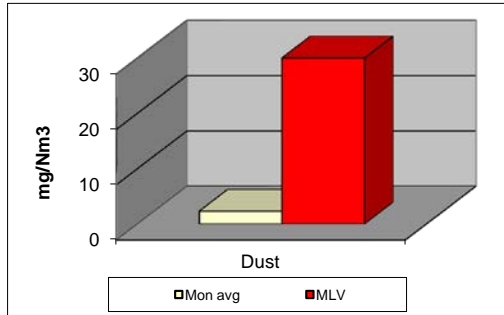


April 2014	Dust		SO <sub>2</sub>		NO <sub>x</sub>		Comments
	(mg/Nm <sup>3</sup> ) МДК 30mg/m <sup>3</sup>	МДК 30mg/m <sup>3</sup>	(mg/Nm <sup>3</sup> ) МДК 400mg/m <sup>3</sup>	МДК 400mg/m <sup>3</sup>	(mg/Nm <sup>3</sup> ) МДК 800mg/m <sup>3</sup>	МДК 800mg/m <sup>3</sup>	
01.04.2014	7,79	30	23,24	400	555,43	800	
02.04.2014	8,38	30	26,38	400	586,36	800	
03.04.2014	8,67	30	31,03	400	678,32	800	
04.04.2014	9,47	30	26,13	400	688,82	800	
05.04.2014	8,71	30	19,22	400	710,46	800	
06.04.2014	9,36	30	21,8	400	692,71	800	
07.04.2014	9	30	25,29	400	690,32	800	
08.04.2014	9,07	30	31,16	400	637,77	800	
09.04.2014	9,08	30	18,84	400	534,27	800	
10.04.2014	10,42	30	25,79	400	535,47	800	
11.04.2014	11,88	30	24,49	400	703,74	800	
12.04.2014	10,8	30	27,61	400	709,57	800	
13.04.2014	9,05	30	38,82	400	654,7	800	
14.04.2014	8,31	30	33,32	400	671,69	800	
15.04.2014	8,31	30	22,79	400	682,76	800	
16.04.2014	8,12	30	13,84	400	693,86	800	
17.04.2014	7,09	30	18,77	400	649,89	800	
18.04.2014	6,95	30	23,11	400	625,59	800	
19.04.2014	6,66	30	34,14	400	609,96	800	
20.04.2014	5,77	30	24,05	400	617,63	800	
21.04.2014	5,96	30	17,63	400	634,79	800	
22.04.2014	5,19	30	28,01	400	622,31	800	
23.04.2014	4,87	30	39,3	400	635,08	800	
24.04.2014	5,55	30	51,78	400	572,6	800	
25.04.2014	5,32	30	63,34	400	655,6	800	
26.04.2014	5,55	30	51,72	400	633,25	800	
27.04.2014	5,45	30	38,62	400	560,47	800	
28.04.2014		30		400		800	
29.04.2014		30		400		800	
30.04.2014		30		400		800	
<b>Average</b>	<b>7,81</b>	<b>30</b>	<b>29,64</b>	<b>400</b>	<b>638,65</b>	<b>800</b>	

**MLV: Maximum Limit Value**

Eplanations: The monthly average values are calculated on the half hour emissin values. Measured values of the concentrations are calculated at 10 vol. of O<sub>2</sub>  
Results of the measurmets are represented in Nm3 (Nm3 - T=273K, P=101,3kP, dry gas)c

## MONTHLY REPORT FROM EMISSION MONITORING IN TITAN CEMENTARNICA USJE - KILN No.4



April 2014	Dust (mg/Nm <sup>3</sup> ) МДК 30mg/m <sup>3</sup>	МДК 30mg/m <sup>3</sup>	SO <sub>2</sub> (mg/Nm <sup>3</sup> ) МДК 400mg/m <sup>3</sup>	МДК 400mg/m <sup>3</sup>	NOx (mg/Nm <sup>3</sup> ) МДК 800mg/m <sup>3</sup>	МДК 800mg/m <sup>3</sup>	Comments
01.04.2014		30		400		800	
02.04.2014		30		400		800	
03.04.2014	3,52	30	34,12	400	606,06	800	
04.04.2014	2,85	30	25,75	400	436,76	800	
05.04.2014	2,55	30	29,57	400	415,51	800	
06.04.2014	2,33	30	33,99	400	462,52	800	
07.04.2014	2,92	30	37,56	400	385,48	800	
08.04.2014	2,69	30	41,01	400	498,79	800	
09.04.2014	2,78	30	28,59	400	531,21	800	
10.04.2014	2,58	30	22,17	400	530,37	800	
11.04.2014	2,4	30	34,24	400	591,52	800	
12.04.2014	2,6	30	40,02	400	662,43	800	
13.04.2014	2,82	30	46,21	400	664,79	800	
14.04.2014	2,8	30	27,67	400	652,05	800	
15.04.2014	2,82	30	22,26	400	620,46	800	
16.04.2014	2,72	30	50,91	400	546,37	800	
17.04.2014	2,31	30	49,99	400	543,45	800	
18.04.2014	2,58	30	38,08	400	569,02	800	
19.04.2014	1,98	30	44	400	528,89	800	
20.04.2014	2,24	30	30,98	400	592,96	800	
21.04.2014	2,42	30	29,55	400	553,55	800	
22.04.2014	2,63	30	73,82	400	666,63	800	
23.04.2014	2,85	30	84,3	400	648,34	800	
24.04.2014	1,35	30	68,14	400	657,48	800	
25.04.2014	1,4	30	76,79	400	703,48	800	
26.04.2014	1,19	30	73,33	400	665,09	800	
27.04.2014	1,26	30	50,22	400	668,71	800	
28.04.2014	1,35	30	40,03	400	671,17	800	
29.04.2014	1,38	30	34,95	400	667,91	800	
30.04.2014	1,25	30	30,22	400	623,22	800	
<b>Average</b>	<b>2,31</b>	<b>30</b>	<b>42,80</b>	<b>400</b>	<b>584,44</b>	<b>800</b>	

**: Maximum Limit Value**

Eplanations: The monthly average values are calculated on the half hour emissin values. Measured values of the concentrations are calculated at 10 % (vol.) of O<sub>2</sub>  
 Results of the measurments are represented in Nm3 (Nm3 - T=273K, P=101,3kP, dry gas)c